

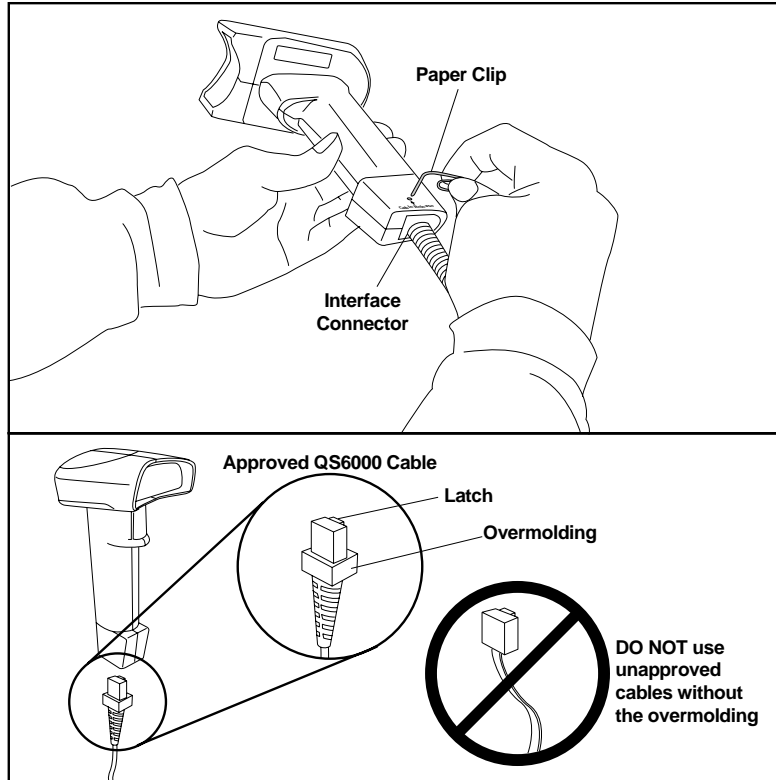
## QS6000 INTERFACE CABLE ADDENDUM

Connect the QS6000 scanner to your system using ONLY the proper PSC approved QS6000 I/F cable.

**WARNING**

Connection using an unapproved cable can result in damage to the scanner. The QS6000 cable can be identified by the overmolding present at the base of the connector (reference the figure below).

To disconnect the I/F cable at the scanner, insert a bent paper clip or .050" hex driver into the opening marked CABLE RELEASE as shown in the figure below, and push inward. Once the connector latch is released, continue to hold in on the latch while carefully pulling the cable free.



## QS6000 INTERFACE CABLE ADDENDUM

Connect the QS6000 scanner to your system using ONLY the proper PSC approved QS6000 I/F cable.

**WARNING**

Connection using an unapproved cable can result in damage to the scanner. The QS6000 cable can be identified by the overmolding present at the base of the connector (reference the figure below).

To disconnect the I/F cable at the scanner, insert a bent paper clip or .050" hex driver into the opening marked CABLE RELEASE as shown in the figure below, and push inward. Once the connector latch is released, continue to hold in on the latch while carefully pulling the cable free.

