

Datalogic™ Scanalyzer™ Configuration and Maintenance Tool



User Guide

Datalogic ADC, Inc.

959 Terry Street
Eugene, OR 97402
USA
Telephone: (541) 683-5700
Fax: (541) 345-7140

©2013-2014 Datalogic Inc.

An Unpublished Work - All rights reserved. No part of the contents of this documentation or the procedures described therein may be reproduced or transmitted in any form or by any means without prior written permission of Datalogic ADC, Inc. or its subsidiaries or affiliates ("Datalogic" or "Datalogic ADC"). Owners of Datalogic products are hereby granted a non-exclusive, revocable license to reproduce and transmit this documentation for the purchaser's own internal business purposes. Purchaser shall not remove or alter any proprietary notices, including copyright notices, contained in this documentation and shall ensure that all notices appear on any reproductions of the documentation.

Should future revisions of this manual be published, you can acquire printed versions by contacting your Datalogic representative. Electronic versions may either be downloadable from the Datalogic website (www.datalogic.com) or provided on appropriate media. If you visit our website and would like to make comments or suggestions about this or other Datalogic publications, please let us know via the "Contact Datalogic" page.

Disclaimer

Datalogic has taken reasonable measures to provide information in this manual that is complete and accurate, however, Datalogic reserves the right to change any specification at any time without prior notice.

Datalogic and the Datalogic logo are registered trademarks of Datalogic S.p.A. in many countries, including the U.S.A. and the E.U. All other brand and product names may be trademarks of their respective owners.

Datalogic ADC and the Datalogic Automatic Data Capture logo are trademarks of Datalogic S.p.A. Scanalyzer is a trademark of Datalogic ADC, Inc.

Magellan is a registered trademark of Datalogic, Inc. in many countries, including the U.S.A. Microsoft Windows® and the Windows® logo are registered trademarks of Microsoft Corporation.

Datalogic ADC, Inc. ("Datalogic")

The Scanalyzer™ Tool Software Product is licensed, not sold, pursuant to the terms and conditions of an End User License Agreement (EULA). Use of the Scanalyzer Tool Software Product constitutes your agreement to the terms and conditions of the EULA (below):

SCANALYZER TOOL SOFTWARE END USER LICENSE AGREEMENT (EULA)

Notice to End User: The Datalogic Software you have acquired contains the software application, Scanalyzer™ Tool ("Software"). This Software is being provided to you under license, subject to the terms and conditions of this End User License Agreement ("Agreement" or "EULA"). If you use the Software, you will be deemed to have accepted the terms and conditions of this Agreement. If you do not intend to be bound to the terms of this Agreement, Datalogic is not willing to license the Software to you, you may not use the Software or a Datalogic Product that includes embedded software, and you must contact the party from whom you acquired the Software and the Datalogic Product for instructions for their return.

This End User Software License Agreement ("Agreement" or "EULA") is a legally binding agreement governing the licensing of the Software and Documentation by Datalogic Scanning, Inc. and its Affiliates ("Datalogic") to the entity or person who has purchased or otherwise acquired a Datalogic Product ("End User"). For purposes of this Agreement, any software that is associated with a separate end-user license agreement is licensed to you under the terms of that license agreement. Datalogic and End User hereby agree as follows:

1. Definitions.

- 1.1 "Affiliate" means a business entity currently existing or later acquired that controls, is controlled by, or is under common control with Datalogic S.p.A.
- 1.2 "Documentation" means materials such as user's guides, program reference guides, quick reference guides, manuals, or similar materials associated with or related to the Datalogic Product, whether in printed, 'online', or other electronic or hard copy format.
- 1.3 "Proprietary Information" means: (a) source code, object code, software, documentation, and any related internal design, system design, data base design, algorithms, technology, technical data or information, implementation techniques, and trade secrets related to the Software, (b) any other trade secrets marked appropriately or identified as proprietary or confidential, and (c) any information that End User, under the circumstances, should recognize as confidential. Proprietary Information does not include any information that the receiving party can establish was (1) in the public domain, (2) already in the receiving party's possession or rightfully known prior to receipt, (3) rightfully learned from a third party not in violation of any other's proprietary rights, or (4) independently developed without access to Proprietary Information.
- 1.4 "Datalogic Product" means the Datalogic® Magellan fixed series scanner products including all embedded Software in and all Documentation related to such product, which has been purchased or otherwise acquired by End User, whether obtained directly or indirectly from Datalogic.
- 1.5 "Software" means any software or computer programs of Datalogic or its third party licensors in machine readable form which is embedded in the Datalogic Product, or offered as a software application that operates in conjunction with the Datalogic Product and/or other third party products, whether obtained directly or indirectly from Datalogic, including any replacement, update, upgrade, enhancement or modification.

2. Scope Of License Granted.

- 2.1 Datalogic grants to End User a non-exclusive, non-transferable, perpetual license to use the Software, solely with the Datalogic Product(s) ('designated Datalogic Product'), in machine-readable form only, solely for End User's internal business purposes. This Agreement does not convey ownership of the Software to End User. Title to the Software shall be and remain with Datalogic or the third party from whom Datalogic has obtained a licensed right. As used in this Agreement, the term 'purchase' or its equivalents when applied to the Software shall mean 'acquire under license.' End User is not entitled to receipt or use of the source code to any Software.
- 2.2 End User shall not copy, modify, decompile, disassemble, reverse engineer, or otherwise reproduce or remanufacture the Software, whether modified or unmodified, nor sell, assign, sublicense, distribute, lend, rent, give, or otherwise transfer the Software to any other person or organization, for purposes other than as expressly provided in this Agreement, without Datalogic's prior written consent. If Software is subject to a multiple user license, the End User is only authorized to use the number of Software licenses allowed under the specific multiple user license. If additional licenses are needed, End User shall order additional Software licenses from Datalogic or its authorized representatives.

3. Transfers, Support.

- 3.1 Any copying, installing, reproduction, remanufacture, reverse engineering, electronic transfer, or other use of the Software other than on, or with, the designated Datalogic Product will be a material breach of this Agreement. However, Datalogic may elect not to terminate this Agreement or the granted licenses, but instead may elect to notify End User that End User is deemed to have ordered and accepted a license for each breaching use. End User shall pay Datalogic the applicable list price for such licenses as of the date of such breach.
- 3.2 End User shall not sell, assign, sublicense, distribute, lend, rent, give, or otherwise transfer the Datalogic Product to any third party for use with Datalogic Software (embedded or as an application) unless such third party agrees with Datalogic in writing to be bound by the terms and conditions of this Agreement. Any such transfer of the Datalogic Product absent such agreement shall be null and void.
- 3.3 End User may obtain support for Software from Datalogic at Datalogic's standard support fees and under Datalogic's standard support terms and conditions in effect at the time the support is requested. Software support is provided at no charge for one year.

4. Intellectual Property.

End User acknowledges that the Software constitutes valuable trade secrets of Datalogic or Datalogic's third party licensors and that the Software is protected by intellectual property laws and treaties. The license set forth in this Agreement does not transfer to End User any ownership of Datalogic's or its third party licensors' copyrights, patents, trademarks, service marks, trade secrets, or other intellectual property rights and End User shall have no right to commence any legal actions to obtain such rights. End User shall not remove, modify, or take any other action that would obscure any copyright, trademark, patent marking, or other intellectual property notices contained in or on the Datalogic Product.

5. Proprietary Information.

- 5.1 End User acknowledges that Proprietary Information is the confidential, proprietary, and trade secret property of Datalogic and Datalogic's third party licensors and End User acquires no right or interest in any Proprietary Information.
- 5.2 End User shall not disclose, provide, or otherwise make available the Proprietary Information of Datalogic or its third party licensors to any person other than End User's authorized employees or agents who are under confidentiality agreement, and End User shall not use the Proprietary Information other than in conjunction with use of the Datalogic Product exclusively for End User's internal business purposes. End User shall take steps to protect the Proprietary Information no less securely than if it were End User's own intellectual property.
- 5.3 The provisions of this Proprietary Information Section shall survive and continue for five (5) years after the termination of this Agreement.

6. Limited Warranty.

- 6.1 Datalogic warrants that, under normal use and operation, the Datalogic Product and Datalogic Software will conform substantially to the applicable Documentation for the period specified in the Documentation. During this period, for all reproducible nonconformities for which Datalogic has been given written notice, Datalogic will use commercially reasonable efforts to remedy nonconformities verified by Datalogic. End User agrees to supply Datalogic with all reasonably requested information and assistance necessary to help Datalogic in remedying such nonconformities. For all defects reported to Datalogic within the warranty period, Datalogic's liability is limited to providing End User with one copy of corrections or responding to End User's problem reports according to Datalogic's standard assistance practices. Datalogic does not warrant that the Datalogic Product will meet End User's requirements or that use of the Software will be uninterrupted or error free, or that Datalogic's remedial efforts will correct any nonconformance. This limited warranty does not cover any product that have been subjected to damage or abuse, whether intentionally, accidentally, or by neglect, or to unauthorized repair or unauthorized installation, and shall be void if End User modifies the product, uses the product in any manner other than as established in the Documentation, or if End User breaches any of the provisions of this Agreement.
- 6.2 EXCEPT AS PROVIDED IN THIS AGREEMENT, THE DATALOGIC PRODUCT IS PROVIDED 'AS IS" AND DATALOGIC MAKES NO WARRANTIES OF ANY KIND, EXPRESS OR IMPLIED, WRITTEN OR ORAL, WITH RESPECT TO THE PRODUCT, AND SPECIFICALLY DISCLAIMS THE IMPLIED WARRANTIES OF MERCHANTABILITY AND FITNESS FOR A PARTICULAR PURPOSE.

7. Infringement.

- 7.1 Datalogic will defend End User against any claim in a lawsuit that the Datalogic Product and the Software furnished hereunder infringe a United States patent or copyright of a third party and Datalogic will pay any damages finally awarded against End User by a court of competent jurisdiction that are attributable to such claim or will pay End User's part of any settlement that is attributable to such claim, provided, that 1) End User notifies Datalogic promptly in writing of the claim, 2) Datalogic controls the defense or settlement of the claim, and 3) End User cooperates fully with Datalogic in such defense or settlement. All notices of a claim should be sent to Datalogic ADC, Inc., Legal Department, 959 Terry Street, Eugene, OR 97402.
- 7.2 In the defense or settlement of any such claim, Datalogic may, at its option, 1) procure for End User the right to continue using the Software with the Datalogic Product, 2) modify the Software and/or the Datalogic Product so that either becomes non-infringing, 3) replace the Datalogic Product and/or Software with an equivalent product not subject to such claim, or 4) provide End User an opportunity to return the Datalogic Product and Software and receive a refund of the purchase price paid, less a reasonable allowance for use.
- 7.3 Datalogic shall have no liability to End User for claims of infringement based upon 1) the use of any Datalogic Product in combination with any product or software which Datalogic has not either furnished or authorized for use with such Datalogic Product 2) the use of any Datalogic Product designed, manufactured, or modified to the specifications of End User, or 3) End User's modification of the Datalogic Product without written authorization from Datalogic.
- 7.4 THE FOREGOING STATES DATALOGIC'S COMPLETE AND ENTIRE OBLIGATION CONCERNING CLAIMS OF PATENT, COPYRIGHT, OR OTHER INTELLECTUAL PROPERTY INFRINGEMENT, CANCELS AND SUPERCEDES ANY PRIOR AGREEMENTS, WHETHER ORAL OR WRITTEN, BETWEEN THE PARTIES CONCERNING SUCH CLAIMS, AND WILL NOT BE MODIFIED OR AMENDED BY ANY PAST, CONTEMPORANEOUS, OR FUTURE AGREEMENTS OR DEALINGS BETWEEN THE PARTIES, WHETHER ORAL OR WRITTEN, EXCEPT AS SET FORTH IN A FUTURE WRITING SIGNED BY BOTH PARTIES.

8. Limitation Of Liability.

EXCEPT AS PROVIDED IN SECTION 7, DATALOGIC SHALL NOT BE LIABLE FOR ANY CLAIMS AGAINST END USER BY ANY OTHER PARTY. IN NO EVENT SHALL DATALOGIC'S LIABILITY FOR DAMAGES, IF ANY, WHETHER BASED UPON CONTRACT, TORT (INCLUDING NEGLIGENCE), PRODUCT LIABILITY, STRICT LIABILITY, WARRANTY, OR ANY OTHER BASIS, EXCEED THE PRICE OR FEE PAID BY END USER FOR THE DATALOGIC PRODUCT. UNDER NO CIRCUMSTANCES SHALL DATALOGIC BE LIABLE TO END USER OR ANY THIRD PARTY FOR LOST PROFITS, LOST DATA, INTERRUPTION OF BUSINESS OR SERVICE, OR FOR ANY OTHER SPECIAL, CONSEQUENTIAL, CONTINGENT,

INDIRECT, INCIDENTAL, PUNITIVE, EXEMPLARY, OR OTHER SIMILAR DAMAGES, EVEN IF DATALOGIC HAS BEEN ADVISED OF THE POSSIBILITY OF SUCH DAMAGES.

9. Government Restricted Rights; International Use.

9.1 Use, duplication, or disclosure of the Software by the U.S. Government is subject to the restrictions for computer software developed at private expense as set forth in the U.S. Federal Acquisition Regulations at FAR 52.227-14(g), or 52.227-19 or in the Rights in Technical Data and Computer Software clause at DFARS 252.227-7013(c)(1)(ii), whichever is applicable.

9.2 If End User is using the Datalogic Product outside of the United States, End User must comply with the applicable local laws of the country in which the Datalogic Product is used, with U.S. export control laws, and with the English language version of this Agreement. The provisions of the "United Nations Convention on International Sale of Goods" shall not apply to this Agreement.

10. Termination.

10.1 Either party may terminate this Agreement or any license granted under this Agreement at any time upon written notice if the other party breaches any provision of this Agreement.

10.2 Upon termination of this Agreement, End User immediately shall cease using any Software (including embedded software) and shall return to Datalogic or destroy all Software covered by this Agreement, and shall furnish Datalogic with a certificate of compliance with this provision signed by an officer or authorized representative of End User. For embedded software, End User agrees to sign a waiver prepared by Datalogic concerning further use of the embedded Software. End User's resumed or continued use of the Software after termination shall constitute End User's agreement to be bound by the terms and conditions of this Agreement for such use.

11. General Provisions.

11.1 Entire Agreement; Amendment. This document contains the entire agreement between the parties relating to the licensing of the Software and supersedes all prior or contemporaneous agreements, written or oral, between the parties concerning the licensing of the Software. This Agreement may not be changed, amended, or modified except by written document signed by Datalogic.

11.2 Notice. All notices required or authorized under this Agreement shall be given in writing, and shall be effective when received, with evidence of receipt. Notices to Datalogic shall be sent to the attention of Contract Administration, Datalogic ADC, Inc., 959 Terry Street, Eugene, OR 97402, or such other address as may be specified by Datalogic in writing.

11.3 Waiver. A party's failure to enforce any of the terms and conditions of this Agreement shall not prevent the party's later enforcement of such terms and conditions.

11.4 Governing Law; Venue: This Agreement and the rights of the parties hereunder shall be governed by and construed in accordance with the laws of the State of Oregon U.S.A, without regard to the rules governing conflicts of law. The state or federal courts of the State of Oregon located in either Multnomah or Lane counties shall have exclusive jurisdiction over all matters regarding this Agreement, except that Datalogic shall have the right, at its absolute discretion, to initiate proceedings in the courts of any other state, country, or territory in which End User resides, or in which any of End User's assets are located.

11.5 Attorneys' Fees. In the event an action is brought to enforce the terms and conditions of this Agreement, the prevailing party shall be entitled to reasonable attorneys' fees, both at trial and on appeal.

- END -

Table of Contents

Overview	1
Introduction	1
Why use the Scanalyzer Tool?	1
Getting Started	2
Installation	2
Supported Scanner Models	2
View Current Model List	4
Connecting a Scanner	4
RS-232 Connection	4
USB COM Connection	5
Failure to Connect	5
Connection Troubleshooting	5
Automatic Updates	6
Software version	6
Database version	6
Operation Without Internet Connection	6
Operating the Scanalyzer Tool	6
Scanalyzer Tool Top Menu	6
File	6
Options and Settings	7
Help	8
Navigational Windows	8
Quick Manager Window	8
Connect/Disconnect	8
Configuration Manager	9
Create Config File	9
Set Current Interface	9
Update Scanner	10
Launch Command Console	11
Exit Program	11
Logging Console Window	11
Configuration Manager Window	11
Configuration Item Window	12

Tag Editor Window	12
Config Manager Top Menu Items	13
Command Console Window	16
Clear Screen Button	16
Get Version Button	16
Get Event Log Button	17
Get Raw Event Log Button	17
Get Statistics Button	17
Save to File Button	17
Command Console File Menu	17
Command Console Text String Entry	18
Command Console Configuration Menu	18
Enhanced Capabilities	18
Configuration Comparison	19
Clone Configuration	20
Rename	20
Cloning Clones	21
Remove a Configuration	21
Advanced User Functions	22
Basic Functions (when Advanced User is NOT selected)	22
Advanced Functions (apply when Advanced User IS selected)	22
Enter Host Port Mode	22

Datalogic™ Scanalyzer™

Configuration and Maintenance Tool

Overview

Introduction

The Datalogic Scanalyzer Configuration and Maintenance Tool ('Scanalyzer tool') is a Microsoft Windows®-based utility for current Datalogic Fixed Retail Products. Its users should have some familiarity with the products as well as a fundamental knowledge of the various operating modes prior to making any changes.

The Scanalyzer tool provides the ability to manage your Datalogic Fixed Retail Scanner, offering the following capabilities:

- Create, save, modify, upload, and download configuration files.
- Examine scanner configuration and compare to other files or default values.
- Read and modify individual configuration items on the scanner via a command interface.
- Read and save scanner information such as firmware version, model number and interface.
- Update scanner firmware.
- Read, save and send scanner event logs and statistics.

Why use the Scanalyzer Tool?

On leaving the factory, units are generally programmed with the most common terminal and communications settings. If you need to change these settings, custom programming can be accomplished using one of the following:

Scanalyzer tool — Use the Scanalyzer tool to view and compare settings before directly configuring a connected scanner or creating a custom configuration file, or...

Programming bar codes — Scan programming bar codes with the scanner.

- The Product Reference Guide (PRG) for your product contains feature configuration information and programming bar codes. Copies of product manuals and other publications are down-loadable free of charge from www.datalogic.com.
- You can also use the Scanalyzer tool to create and print your own programming bar code labels for scanning.

Getting Started



NOTE

This manual documents the Scanalyzer tool features, menus and functions available at the time of its publication. Since the Scanalyzer tool is regularly updated to include new products and their latest features, the screenshots and descriptions provided here are subject to change.

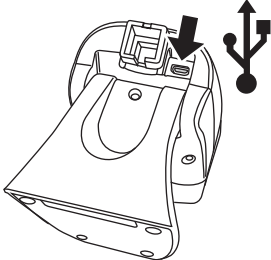
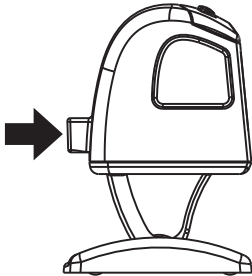
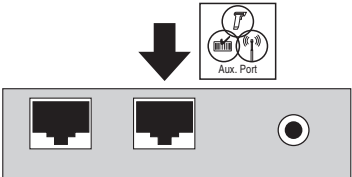
Installation

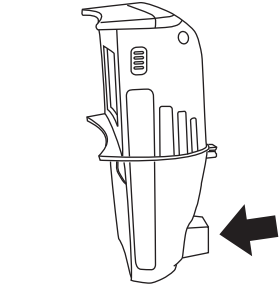
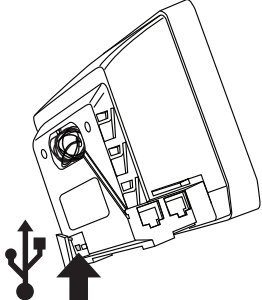
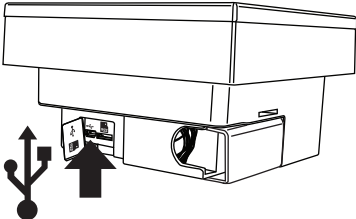
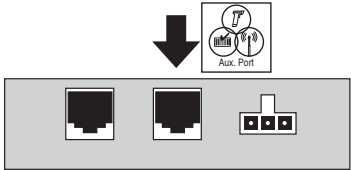
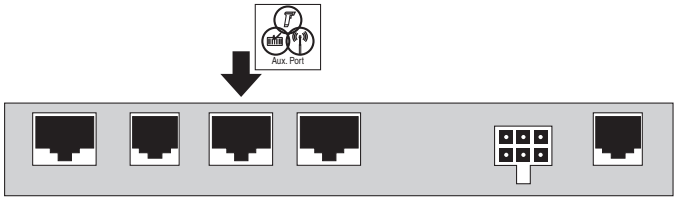
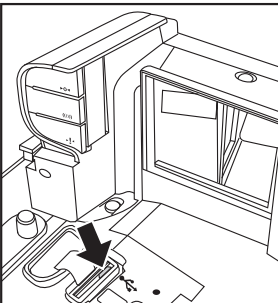
1. Read through these instructions to learn of any additional equipment and/or software needed to connect and update your specific scanner model.
2. Download or copy the **Scanalyzer.msi** file to your PC.
3. Double-click the **Scanalyzer.msi** file and follow the on-screen instructions.
4. The installer creates a desktop link and adds a shortcut to the start menu.

Supported Scanner Models

At the time of this writing, the models listed in the table below are supported by the Scanalyzer tool.

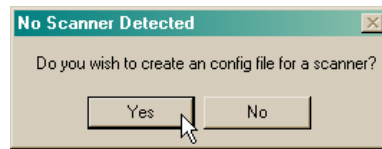
Table 1. Scanner Models and Connections

MODEL(S)	TEST PORT CONNECTION TYPE	CONNECTION PORT LOCATION
Magellan 800i	micro USB Test Port	
Magellan 1000i/1100i	RS-232 Host Port	
Magellan 2200/2300	RS-232 Aux Port	

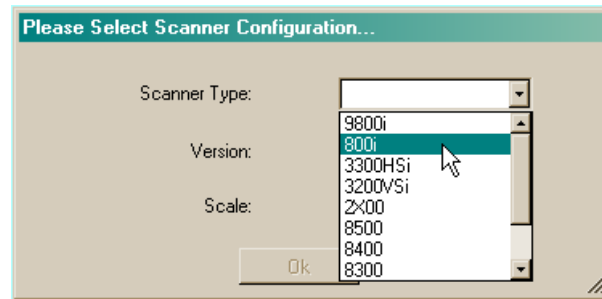
MODEL(S)	TEST PORT CONNECTION TYPE	CONNECTION PORT LOCATION
Magellan 1400i	RS-232 Host Port	
Magellan 3200VSi	micro USB Test Port	
Magellan 3300HSi	micro USB Test Port	
Magellan 8300/8400	RS-232 Aux Port	
Magellan 8500Xt	RS-232 Aux Port	
Magellan 9800i	micro USB Test Port (beneath platter)	

View Current Model List

To view a current list of models supported by your version of the Scanalyzer tool, disconnect any scanners, then click the **Configuration Manager** button. Next click **Yes** in the "Do you wish to create a config file for a scanner?" dialog box.



A pull-down listing of currently supported scanner models is then displayed.



Connecting a Scanner



Each time the Scanalyzer tool is started, its software can perform automatic updates to ensure it is using the latest product and configuration data. See the topic, [Automatic Updates](#) for more details.

RS-232 Connection



Be sure to make the correct connection type for your scanner model. Reference [Table 1](#) for a listing. The Scanalyzer tool cannot communicate with a scanner that is not connected to the correct port and using the appropriate cable.

To connect to a scanner via RS-232, do the following:

1. Disconnect any host cables from your scanner, then connect the special RS-232 Testport cable designed for your scanner model. Connection locations are shown in [Table 1](#).
2. Connect the other end of the testport cable to the serial port of your PC.
3. Apply power to the scanner.
4. Start the Scanalyzer tool and click **Connect to Scanner**. The program will attempt to connect on the configured serial port and auto-detect the scanner type.
5. When successful, the program will display the appropriate scanner picture, list information about the device, and activate all available selection buttons.
6. If unsuccessful, see the topic, [Failure to Connect](#).

USB COM Connection



Use the following steps to connect to a scanner via USB-COM Service Port (see [Table 1](#) for a listing of models supporting USB-COM connection). You will require a USB cable with a micro USB connector end to plug into the scanner.

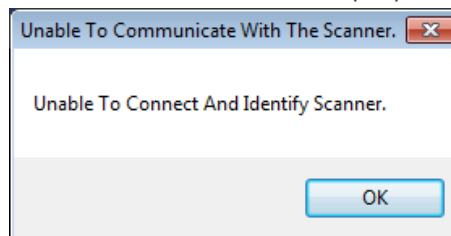
If not previously done, go to the Datalogic website to download and install the Datalogic USB-COM Driver for your PC. (From that website, driver downloads can be found under 'Software & Utilities' at the **Automatic Data Capture** Support & Services\Downloads page.)

After you have installed the USB-COM Driver, perform the following steps:

1. Connect the micro USB cable to the scanner's USB Service Port (see [Table 1](#) for location information).
2. Connect the other end of the Service Port cable to one of the USB ports on your PC.
3. Apply power to the scanner if needed.
4. Start the Scanalyzer tool and click **Connect to Scanner**. The program will connect via the USB port, and auto-detect the scanner model.
5. When successful, the program will display the appropriate scanner picture, list information about the device, and activate all available selection buttons.
6. If unsuccessful, see the topic, [Failure to Connect](#).

Failure to Connect

1. If the program fails to connect, it will display a message box:



2. Click 'OK' to exit the box.

Connection Troubleshooting

Try these possible remedies if the program fails to connect:

1. First, make sure the com port is set correctly by choosing **Set Com Port** from the Options and Settings menu, then selecting the correct com port settings for your system. Retry the connection.
2. Upon failure at retest, try resetting your scanner using the instructions provided in the Product Reference Guide (PRG) for that model. Retry the connection.
3. If the problem persists, contact Tech Support for assistance.

Automatic Updates

When the Scanalyzer tool is started and you are connected to the Datalogic network (via internet connection), and if enabled to do so, the program will automatically check for the latest program updates and download the current scanner feature database file.

Software version

If the application finds a newer version of the Scanalyzer tool available, it will ask if you would like to update. Click 'Yes' to update when requested.

Database version

If the application finds a newer version of the scanner database, it will automatically update the database on the PC. No user interaction is required. The scanner database contains the xml and evt files necessary for proper display of scanner configuration items and event logs.

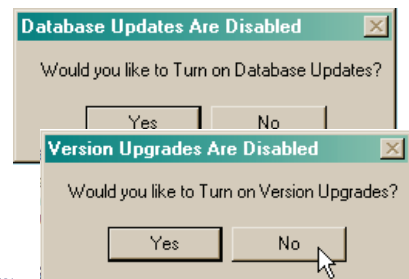
Operation Without Internet Connection

You cannot obtain automatic updates without being actively connected to the internet, however, the Scanalyzer tool retains a local copy of its database and so can operate without internet access.



NOTE

Upon initially opening the application, two queries will appear asking whether you would like to turn on database updates and version updates. Set these registry settings to "No" if you wish to help speed initialization of the application when not connected to the internet.



Operating the Scanalyzer Tool

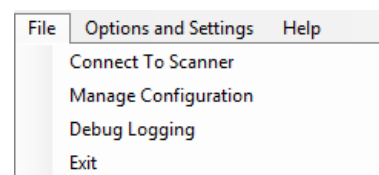
Once the scanner has been successfully connected (see [Connecting a Scanner](#) above), use the top menu and/or the Quick Manager menu choices to navigate the program.

Scanalyzer Tool Top Menu

Tabs on the Scanalyzer tool main window top menu include **File, Options and Settings, and Help**.

File

File menu options include the following:



Connect To Scanner — Selecting this option will cause the Scanalyzer tool to attempt connection with a scanner.

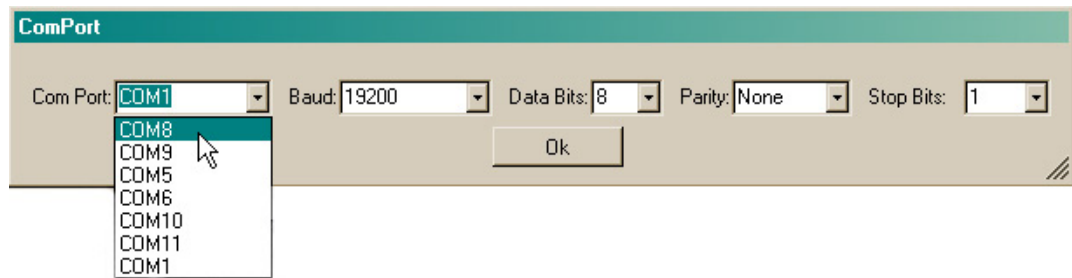
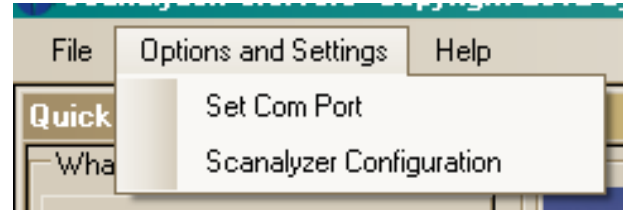
Manage Configuration — Allows management of scanner configuration in Offline Mode.

Debug Logging — Opens the Logging Console. See the topic [Logging Console Window](#) for more details.

Exit — Closes the service port connection (if open) and exits the Scanalyzer tool.

Options and Settings

Set Com Port — Scroll down to select, or type in the needed Com Port designation. Other settings, such as Baud rate, Parity, etc. can also be modified from this screen. When all attributes are correct, click 'OK' to confirm the new setting.



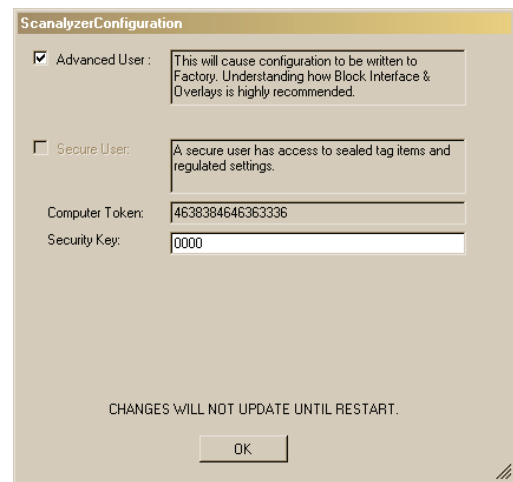
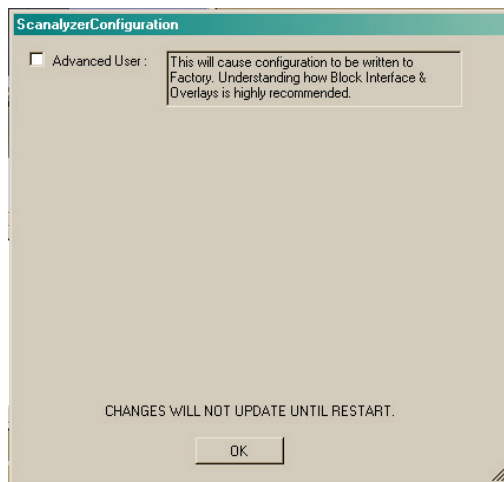
Scanalyzer Configuration — This window allows access to technical level features for advanced users.



CAUTION

Do not access or experiment with advanced features unless you are qualified to do so. Changes and selections made while in this mode could potentially cause serious malfunction.

Once the Advanced User checkbox has been checked, advanced functions will be toggled and additional information appears in the window. See [Advanced User Functions](#) for more details.



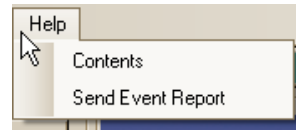
NOTE

Advanced functions will not be active until the application has been restarted. Upon clicking 'OK' a convenient prompt asks if you would like to restart the Scanalyzer tool.

Secure User functions are only made available to advanced users upon attaining special authorization.

Help

Contents — Click on Contents to access the online Help manual for the Scanalyzer tool.



Send Event Report — This feature is for use if you are experiencing a problem with the Scanalyzer tool. Upon your contacting Tech Support, they may ask that you click this button to automatically create an Event Report. You should then address and send the resulting e-mail message (with its attachment) as directed by Tech Support.

Navigational Windows

The Scanalyzer tool uses several different windows to display data and offer access to its features.

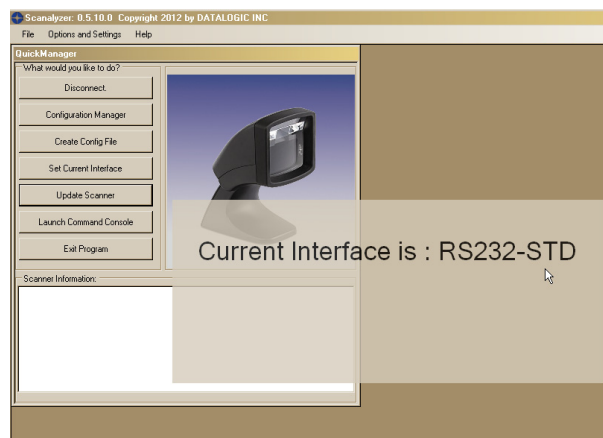
Quick Manager Window

Most program functionality is accessed from the Quick Manager window. Below is a description of the menu buttons available from this screen.

Connect/Disconnect

This button toggles between connect or disconnect depending upon the current state of the scanner connection.

Upon clicking **Connect**, the Scanalyzer tool will attempt to connect a scanner which is properly cabled to the PC. Upon successfully establishing communication with the scanner, a series of messages will be displayed, indicating that the Scanalyzer tool is reading the scanner's configuration. The Scanner Information window will be populated with scanner model name, interface, version, and some additional information. Quick Manager menu buttons should all be active upon connection.



If connection is not successful, see the topic, [Failure to Connect](#).

Clicking **Disconnect** will cause the program to close the Service Port/Test Port, clear the Scanner Information window, and dim some of the buttons on the Quick Manager page.

Configuration Manager

The Configuration Manager is the main working window used for making the following configuration changes.

- Create, save, modify, upload, and download configuration files.
- Examine scanner configuration and compare to other files or default values.
- Read and modify individual configuration items on the scanner via a command interface.
- Special functions. See [Enhanced Capabilities](#) for additional information.

See the Topic [Configuration Manager Window](#) for more details.

Create Config File

This option allows you to work offline (without having a scanner connected) to create custom configuration files. To prevent conflicts, you will first be prompted to select the target scanner and interface types when accessing this function.

Next, the Configuration Manager Window is launched to enable configuration modifications when in this state (not connected to a scanner). See [Configuration Manager Window](#) for more information.

Set Current Interface

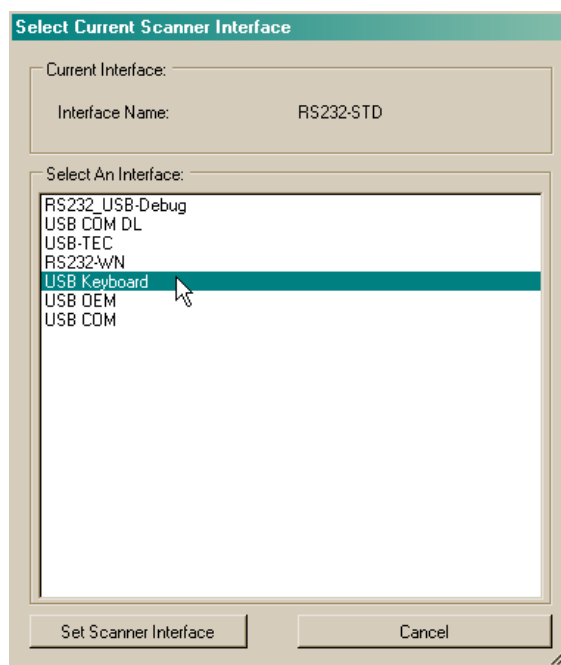


Selection of a different interface can overwrite the current interface choices and their settings in the Configuration Manager Window. Make sure to save any custom settings you have made before changing the interface type.

NOTE

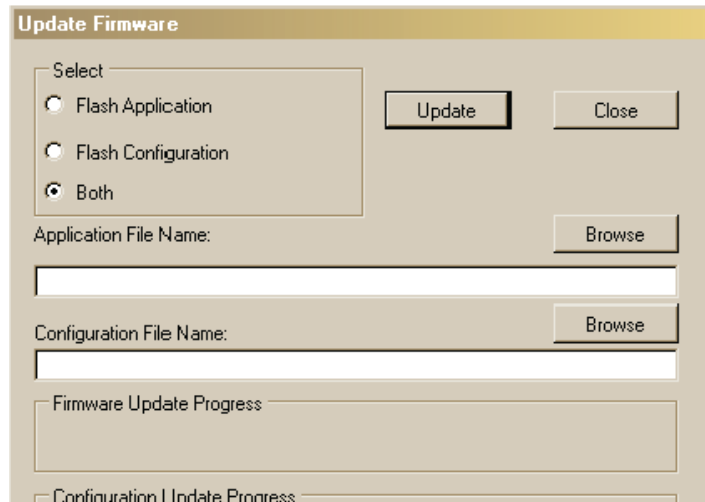
Interface choices are necessarily limited to those available for the currently selected scanner type, and may not be the same as those listed in the example below. Make sure to select the correct interface type to which the configured scanner will ultimately be connected when placed in service.

Highlight to select the desired scanner interface from the choices listed in the selection box, then click 'Set Scanner Interface.'



Update Scanner

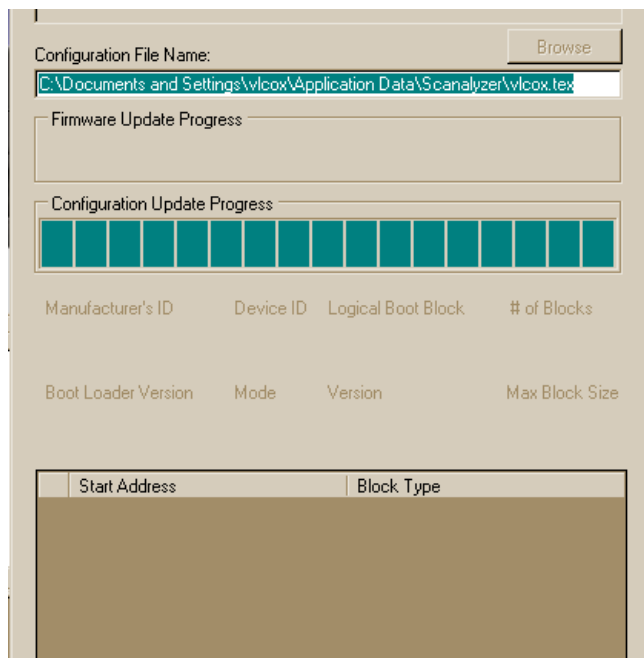
This function is used to update firmware to a connected scanner. You can choose to update the Flash Application (.bin)¹ file or Flash Configuration (.tex) file, or both. Click to select which file(s) to upload, then click the appropriate button to browse to your desired file(s). When ready, click the Update button to perform the upload operation.



The progress bar(s) and data listings on the bottom of the Update Firmware window will display related information during the update process.



Please wait until the update has completely finished. This can take up to a few minutes. Upon completion, a dialog box will appear indicating the elapsed time for the update.



1. Magellan 9800i models will substitute '.537' in place of the '.bin' extension.

Launch Command Console

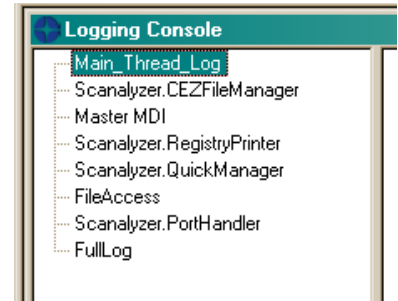
Programmers wishing to view logs and enter commands using a terminal console screen can do so using this function. See [Command Console Window](#) for further details.

Exit Program

Closes the service port connection (if open) and exits the Scanalyzer tool.

Logging Console Window

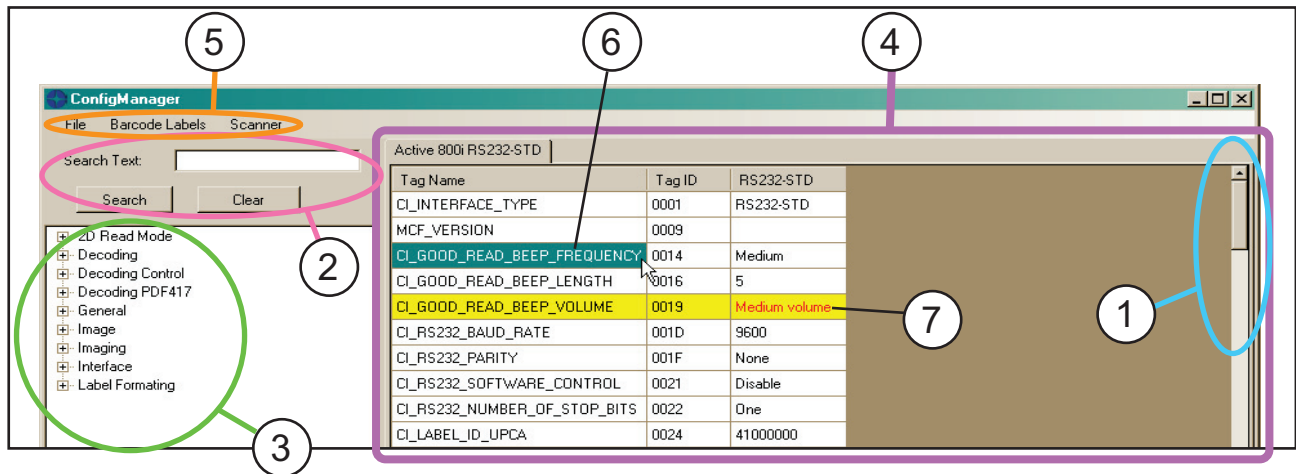
This window is accessed via selection of Debug Logging from the main menu. During a given session, some of these logs might be empty. The Logging Console Window offers a rich variety of ways for advanced users to access logged data.



Configuration Manager Window

The Configuration Window Manager displays configuration Tag IDs (features/options) and their associated settings, plus provides a variety of ways to locate and change these settings (see [Figure 1](#)).

Figure 1. Configuration Manager Window



1	Scroll Bar	5	Top Menu Items
2	Search Text	6	Currently selected feature
3	Tree View	7	Edited feature (highlighted with yellow, value color is red)
4	Configuration Item Window		

Scroll Bar — The standard navigational ribbon on the righthand side of the Configuration Item Window allows direct browsing of the entire configuration list displayed.

Search Text — Users can use the Search Text function in the upper lefthand corner of the Configuration Manager to jump directly to a desired configuration tag name. Type in significant characters from the feature you are searching for, then click the ‘Search’ button. The ‘Clear’ button repopulates the configuration item area with the full list.



This search function is not case-specific (upper or lower case).

NOTE

Tree View — Displayed on the lefthand “Tree View” list are nested bookmarks which, when clicked, jump the cursor to the selected tag name (scanner feature) in the configuration item list. For your convenience, these bookmarks are logically categorized by feature type.

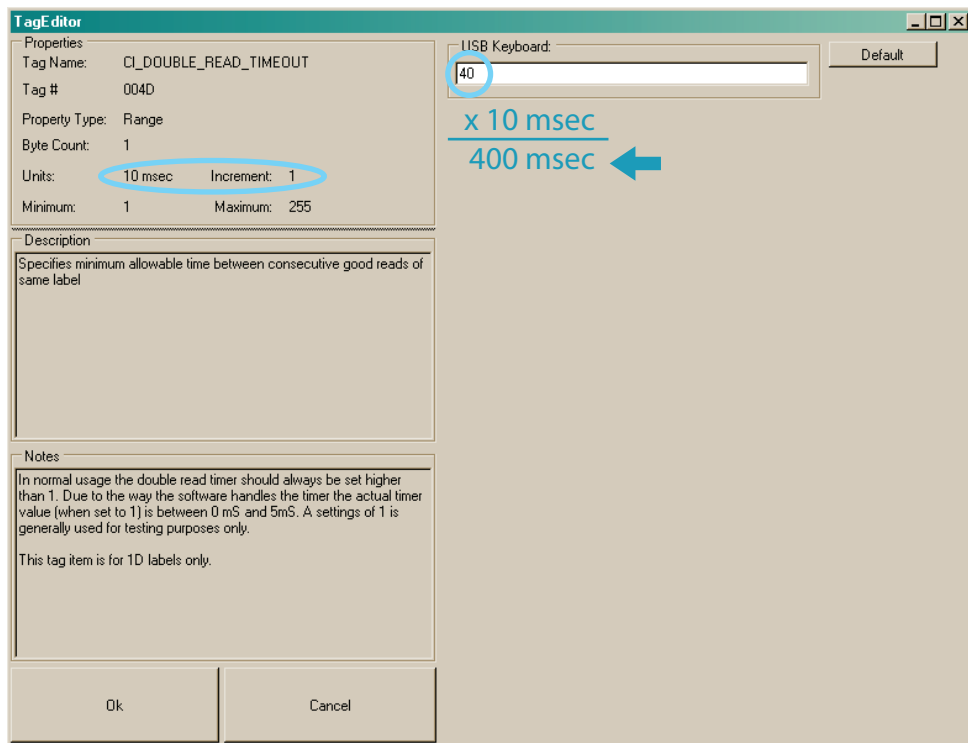
Configuration Item Window

The righthand portion of the ConfigManager window opens with a listing of Configuration Items (and their present settings) for the current interface. Double-click on a tag name, or on its row, to access the [Tag Editor Window](#) for that item.

Tag Editor Window

Contents of the Tag Editor Window differ depending upon the available settings or options for the selected configuration item (feature).

Figure 2. Tag Editor Window



Properties

The window displays details concerning the configuration item's Properties, and defines settings for the feature /option. The example in [Figure 2](#) explains that Double Read Timeout is set as a range from a minimum of 1 increment to a maximum of 255 increments. Each increment represents 10 milli-seconds, so the increment entry of '40' in the righthand feature setting area in the illustration would represent a Double Read Timeout setting of 400 milli-seconds.

Description

This text presents a description of what the feature does.

Notes

The Notes area lists any exceptions, special instructions or other information needed when modifying the settings.

Feature Value

The feature value box in the upper righthand corner of the Tag Editor Window must contain values and/or characters that are appropriate to that setting, as defined by the Properties box. See an example provided under the topic, [Properties](#).

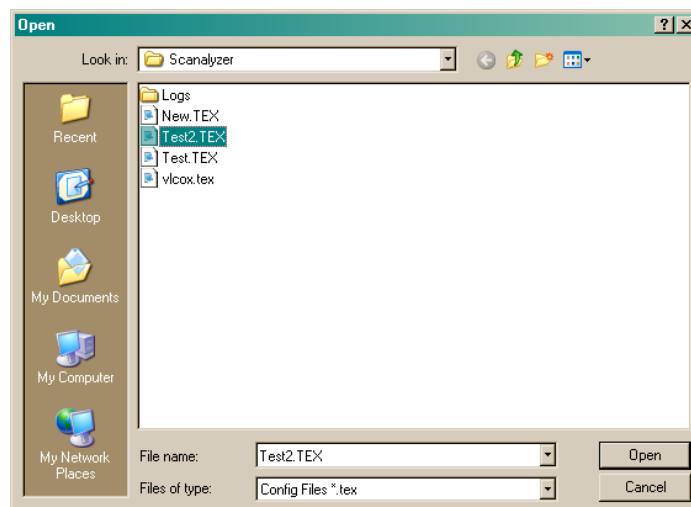
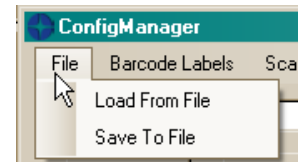
A Default button located next to the Feature Value box allows quick return of the configuration item to its default setting.

Config Manager Top Menu Items

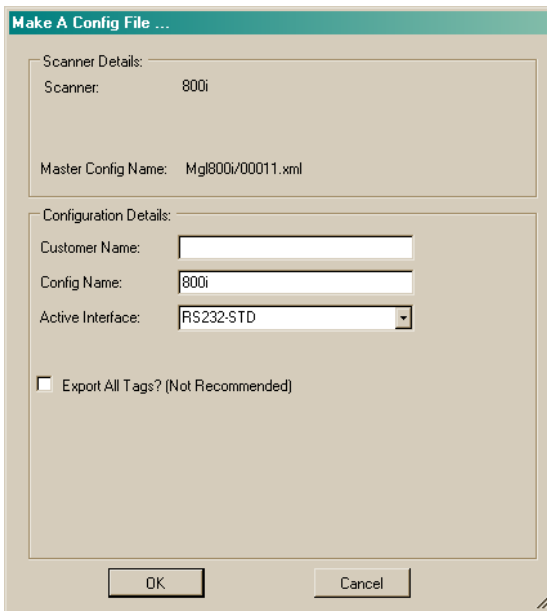
Functions available from the Config Manager top menu are as follows:

File

Load From File — opens a configuration (.tex) file as a new tab in the Configuration Item Window. This is an important feature of the application, as this allows you to view and compare — side-by-side — all configurable settings, by interface, for each of the open configuration files (see [Configuration Comparison](#) for more details).



Save To File — saves the currently displayed configuration settings to a .tex file. Enter your desired filename in the 'Customer Name" field. The 'Config Name" and 'Active Interface" fields will auto-populate with the correct associated entries.

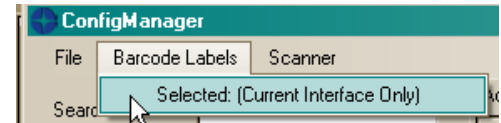


This sub window also displays the scanner type and filename for the Master Config xml file in current use.

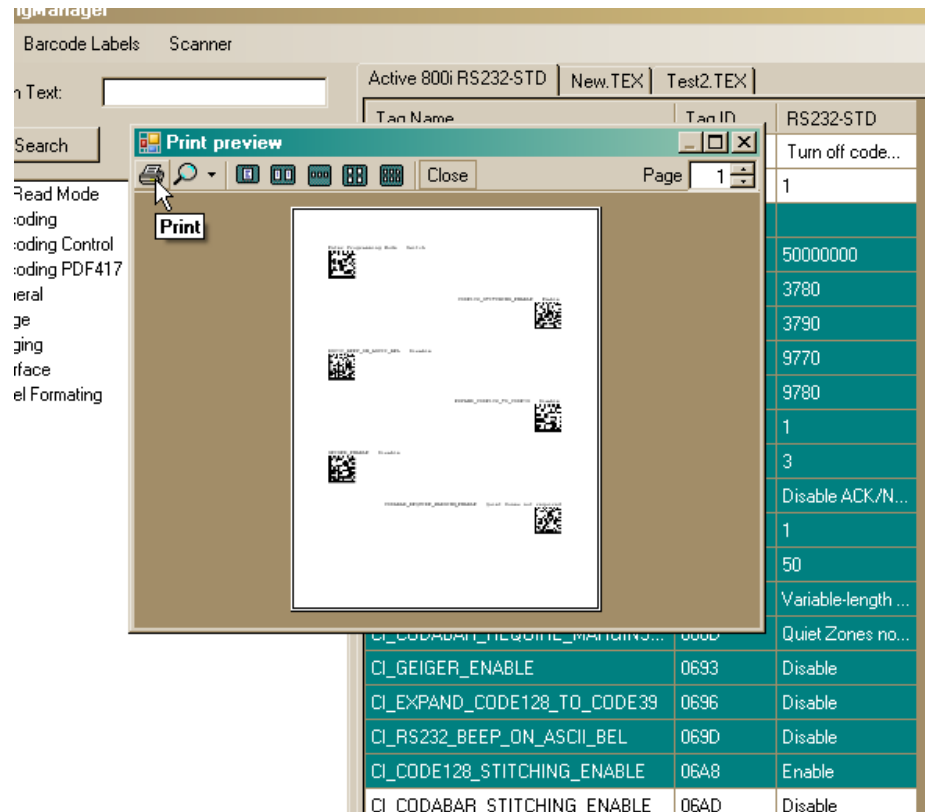
An option is provided, to export all tags, however, this action is not recommended because of the increased size of the resulting file.

Bar Code Labels

This utility will create printable pages containing the bar codes required to place the scanner in Programming Mode, set the selected feature to the listed values, then exit Programming Mode.

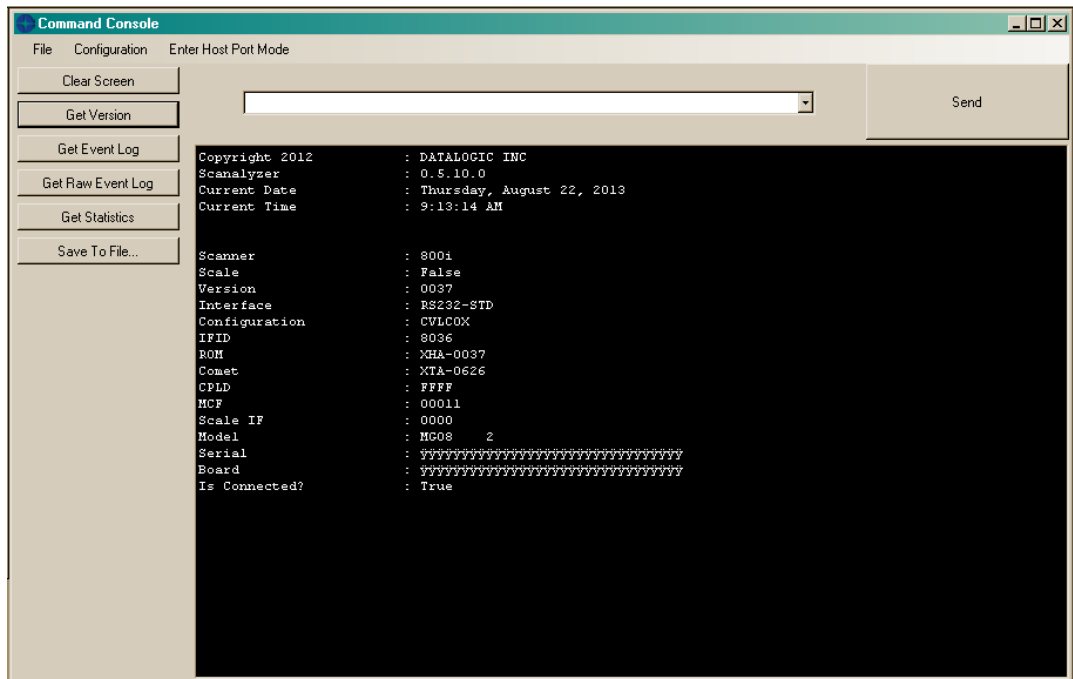


To generate bar codes, select to highlight any and all rows containing your desired feature settings, then, from the Bar Code Labels menu, pull down to select '**Selected: (Current Interface Only)**.' This will open the Print Preview window, which permits you to view and print the generated pages.



Command Console Window

The Command Console Window allows programmers to directly view and edit the code associated with the currently selected interface, as well as view event logs and statistics.



Below are descriptions of the buttons and menu items available in the Command Console Window:

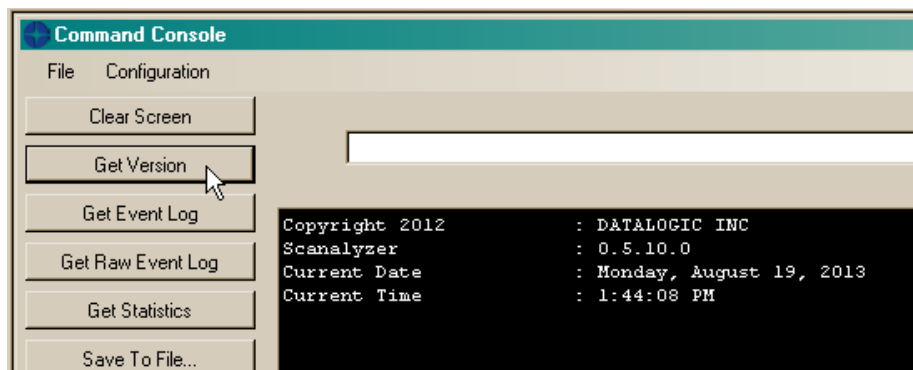
Clear Screen Button

Clicking this button removes all items from the Command Console screen, leaving it blank.

Get Version Button

Loads version information from the scanner as shown in [Figure 3](#).

Figure 3. Get Version Data Sample



Get Event Log Button

This list logs coded events that have occurred, and their number of instances.

Type	Module	Code	Event	:ExEvent	Hours	Count
00	TP	TP_ENTER_TESTPORT	0	:0	0	1
00	00	02	0	:0	0	227
00	00	00	0	:0	0	0

Get Raw Event Log Button

Display the same event log without trying to interpret it through the 'evt' file.

Type	Module	Code	Event	:ExEvent	Hours	Count
00	07	00	0	:0	0	1
00	00	02	0	:0	0	227
00	00	00	0	:0	0	0

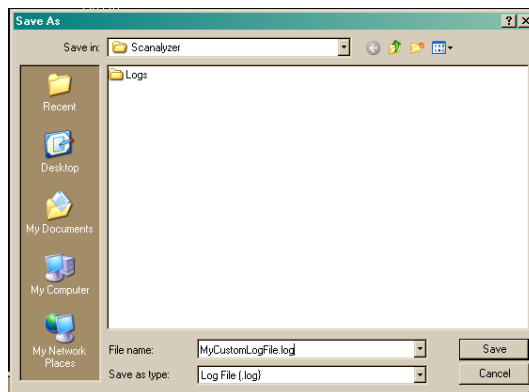
Get Statistics Button

Lists the number of Error Resets and Label Reads.

```
Number of Error Resets : 00 E3
Number of Label Read  : 00 00 00 00
```

Save to File Button

Saves the contents of the terminal display to a log file. Browse to the desired location, give the log file a unique name, then click 'Save.'



Command Console File Menu

The following are the choices listed in the Command Console File menu:

Save to File

Saves the contents of the terminal display to a log file. Browse to the desired location, give the log file a unique name, then click 'Save.'

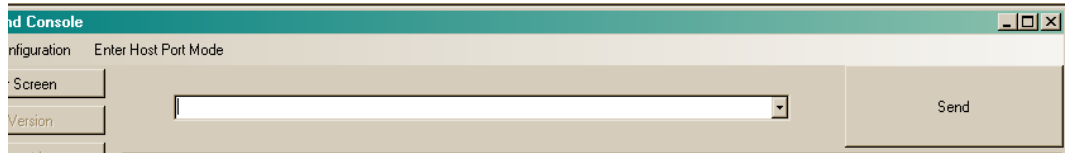


Exit

Closes the Command Console Window.

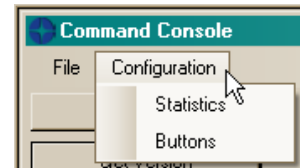
Command Console Text String Entry

Type your text (code) into the box provided, then press 'Send' to send the command to the console.



Command Console Configuration Menu

These are options available from the Command Console Configuration menu:



Statistics

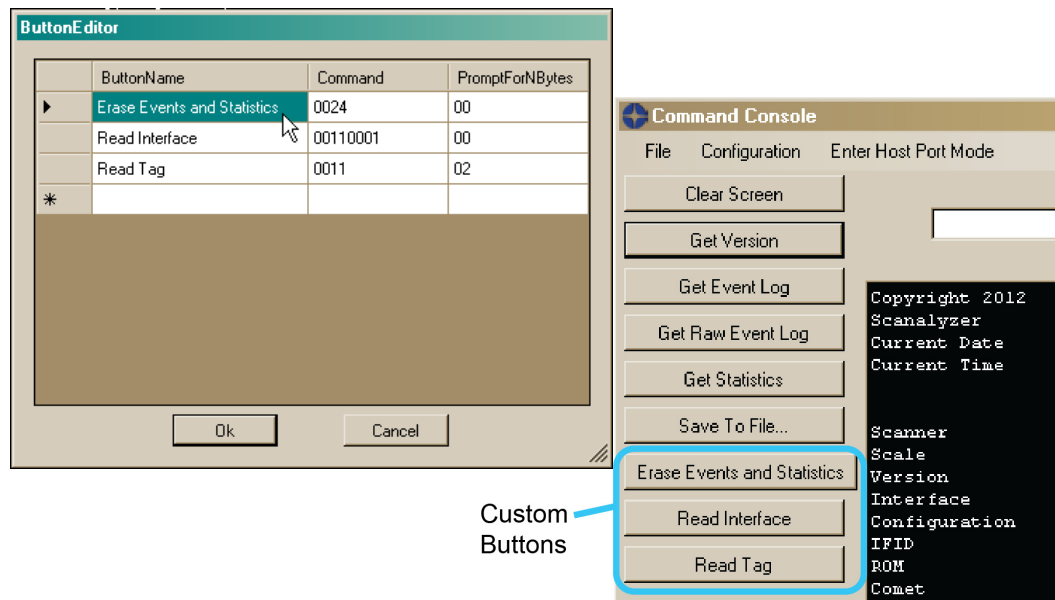
Selection of this pulldown item displays a new Statistics Configuration window listing the number of error resets and number of labels read.

Buttons

This pulldown selection allows you to design your own set of custom Command Console 'shortcut' buttons. As you can see in the Button Editor Window in [Figure 4](#), creation of a button only requires that you type in your desired Button Name, the valid command you wish to associate with it, and the number of bytes returned when that command is initiated. Commands are defined by the Service Port Specification.

Custom buttons you create will appear below the 'Save To File' button on the Command Console screen.

Figure 4. Button Editor Window



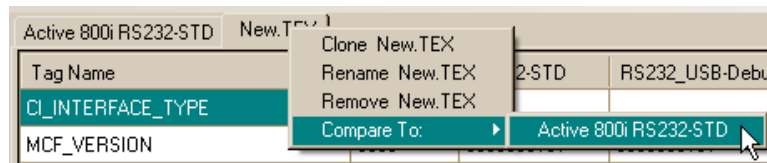
Enhanced Capabilities

The Scanalyzer tool's Configuration Comparison and Cloning capabilities provide the following advantageous functions to its users.

Configuration Comparison

To compare the differences between two configurations, follow this procedure:

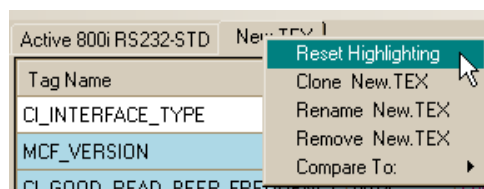
1. Start the Scanalyzer tool.
2. If one of the configurations to be examined is the current configuration of a given scanner, follow the preceding steps for [Connecting a Scanner](#) and opening the [Configuration Manager Window](#). The scanner's active configuration will populate the Configuration Item Window.
3. Use the 'Load From File' function from the Config Manager File menu to open a configuration (.tex) file for comparison. This file will open in its own new tab within the Configuration Item Window.
4. Right-click on the new tab and scroll to 'Compare To:', selecting the configuration/file you wish to make a comparison with.



5. The Configuration Item Window will then highlight the cell rows and brightly color any differing text, while any identical entries will remain in black text, as demonstrated in the RS-232-STD column below.

Tag Name	Tag ID	Active 800i RS232-STD	New.TEX	RS232-WN	USB Keyboard
CI_INTERFACE_TYPE	0001				
MCF_VERSION	0009	3030303131	3030303131	3030303131	3030303131
CI_GOOD_READ_BEEP_FREQUENCY	0014	Low	Medium	Medium	Medium
CI_GOOD_READ_BEEP_LENGTH	0016	5	5	5	5
CI_GOOD_READ_BEEP_VOLUME	0019	Low volume	High volume	High volume	High volume
CI_RS232_BAUD_RATE	001D	9600	9600	9600	
CI_RS232_PARITY	001F	None	None	None	
CI_RS232_SOFTWARE_CONTROL	0021	Disable	Disable	Disable	
CI_RS232_NUMBER_OF_STOP_BITS	0022	One	One	One	
CI_LABEL_ID_UPCA	0024	41000000	41000000	41000000	41000000
CI_LABEL_ID_UPCE	0025	45000000	45000000	45000000	45000000
CI_LABEL_ID_EAN8	0026	46460000	46460000	46460000	46460000
CI_LABEL_ID_EAN13	0027	46000000	46000000	46000000	46000000

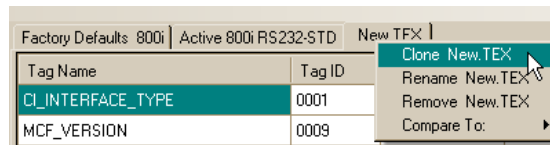
6. Once you have completed your comparison, you can right-click on the same tab once again and select 'Reset Highlighting' to return the text to its normal state (black text on white background).



Clone Configuration

If you desire to create a new configuration file based on an existing file without overwriting the original, use **Clone** to create a new, editable configuration file.

1. If the existing configuration file you wish to clone is not presently open in the Configuration Item Window, use the [Load From File](#) function from the Configuration Manager File menu to load the desired file to a new tab in the window.
2. The Clone function is accessed by right-clicking on the current tab in the Configuration Item Window. For your convenience, the Clone command will automatically identify the name of the file that will be cloned. For example, the screenshot below shows that the file to be cloned is called 'New.TEX.'



NOTE

If the correct filename is not the one listed, click away from the dropdown box without making changes, then navigate to make the desired target configuration the active tab in the Configuration Item Window before right-clicking on it.

3. Select 'Clone [filename].' A new tab/file that adds 'Cloned' before the filename will be created and made the active file.
4. You can now modify settings for the cloned file to suit your needs.

Rename

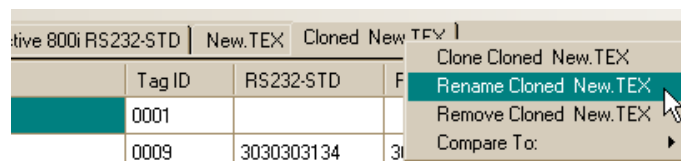
This function allows you to rename a file you have loaded, cloned or created.



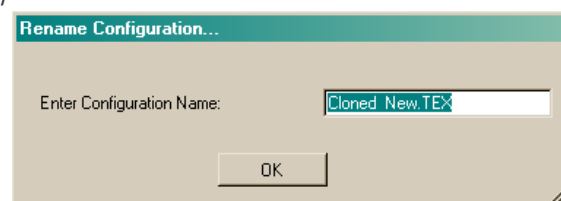
NOTE

The Rename function will update the name for the active tab and all of its instances on the page, however, you will need to go to 'File\Save To File' in order to physically save the file.

1. Click to make the tab of the file to be re-named the active tab.
2. Right-click on the active tab to bring up the special menu and scroll to select the Rename function.

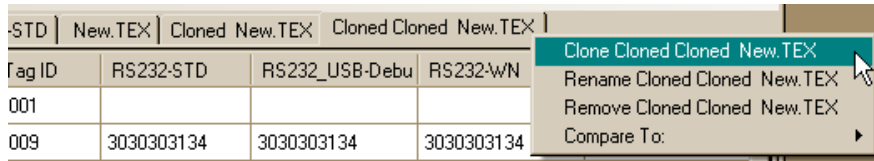


3. Highlight the text, then overwrite with your chosen name. Click okay when finished, to apply the new name.



Cloning Clones

Yes, you can make a clone of a clone. You can even clone a clone of a clone. Further cloning options are available when you make your clone the active tab, then right-click to access that function from the special menu (see the screenshot below).



Why would you want to Clone a Clone?

One example might be if you wished to vary beeper settings between scanners being placed at different lanes. In order that sales associates could easily discriminate between the good read beep heard from one lane to the next, you could clone a custom configuration file for each checkstand lane that contains identical configurations settings, **except** for Good Read Beep Frequency and Length settings.

For this example, these custom-cloned configuration files could be named logically, as 'Lane1_HighShort,' 'Lane2_LowLong,' 'Lane3_MediumShort,' etc. to indicate the configured good read frequency and length settings for the beeper.

As scanners are prepared for multiple store installations, they could be pre-configured using these custom files, and designated for the particular lane they are targeted to be installed in.

Remove a Configuration

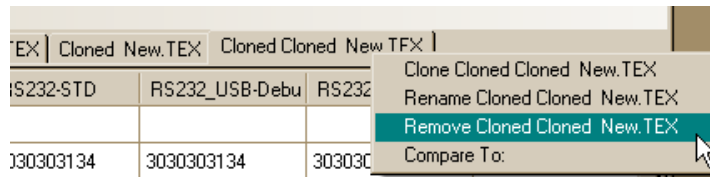


NOTE

Before using the Remove function, make sure to save any configurations you wish to store using the [Save To File](#) function from the Configuration Manager File menu.

Also, when exiting Config Manager, the program will helpfully prompt you by asking if you wish to discard changes. Click "No" to return to Config Manager and use [Save To File](#) to avoid losing work you wish to keep.

To remove a configuration from the Configuration Item Window, click on its tab to make it the active tab, then right-click and select the Remove option as shown in the screenshot below.



Advanced User Functions

When the Advanced User option is activated from the Options and Settings\
[Scanalyzer Configuration](#) sub menu, any new configuration written to an attached scanner will write to a different sector of its memory as described below:

Basic Functions (when Advanced User is NOT selected)

Basic Users can read/write to the 'User' Area of scanners. These are lost when the user...

- issues a 'switch interface' command.
- scans a 'return to factory defaults' label.
- scans a 'switch interface' label.

Advanced Functions (apply when Advanced User IS selected)

Advanced Users can create a configuration file that will write to the 'factory' area in all interfaces. These are the values that will be used whenever the user...

- issues a 'switch interface' command.
- scans a 'return to factory defaults' label.
- scans a 'switch interface' label.

Additional options will also become available on some of the menus and windows when the Advanced User option is selected.

Enter Host Port Mode

This menu item is added to the top of the Command Console window.

Selection of this mode will connect to the scanner with the 'Host' Port interface (set to RS-232), and exit 'Service' port mode before doing so.



NOTE

This mode is primarily used for internal testing.



www.datalogic.com

© 2013-2014 Datalogic ADC, Inc. • All rights reserved. •
Datalogic and the Datalogic logo are registered trademarks of
Datalogic S.p.A. in many countries, including the U.S.A. and the E.U.

Datalogic ADC, Inc.

959 Terry Street | Eugene | OR 97402 | USA
Telephone: (1) 541-683-5700 | Fax: (1) 541-345-7140

