

INSTALLATION MANUAL

BarDrawer and Printer Driver

This manual guides user to install Sbarco printer software and driver in Microsoft windows.

Features:

- BarDrawer 1.6.0
- Sbarco T4 Printer Driver 1.3.0

Sbarco Co. Ltd.

Version 1.1 2011/11/10

Content

BarDrawer Applications	2
How to install BarDrawer Application	4
How to Uninstall BarDrawer Application	9
Printer Driver	11
Install by DriverSetup	12
Install through Wizard of Add Printer	17
1. For Window XP.....	17
2. For Window 7	22
Install through plug and play (available on USB)	26
1 For Window XP.....	26
2 For Window 7	31
Install TCP/IP port (available on Ethernet).....	38
1 Through DriverSetup to install.....	38
2 Through Add a printer to install.....	40
Printer Driver Settings.....	44
1. Introduction Page Setup page.....	44
2. Introduction Options page	45
3. Introduction User Commands page.....	48
4. Introduction Tools page.....	49
5. Introduction About page	50

BARDRAWER APPLICATIONS

The BarDrawer application package is a set of SBARCO software. The package includes BarDrawer, PrinterTool, DriverSetup and FWTool.

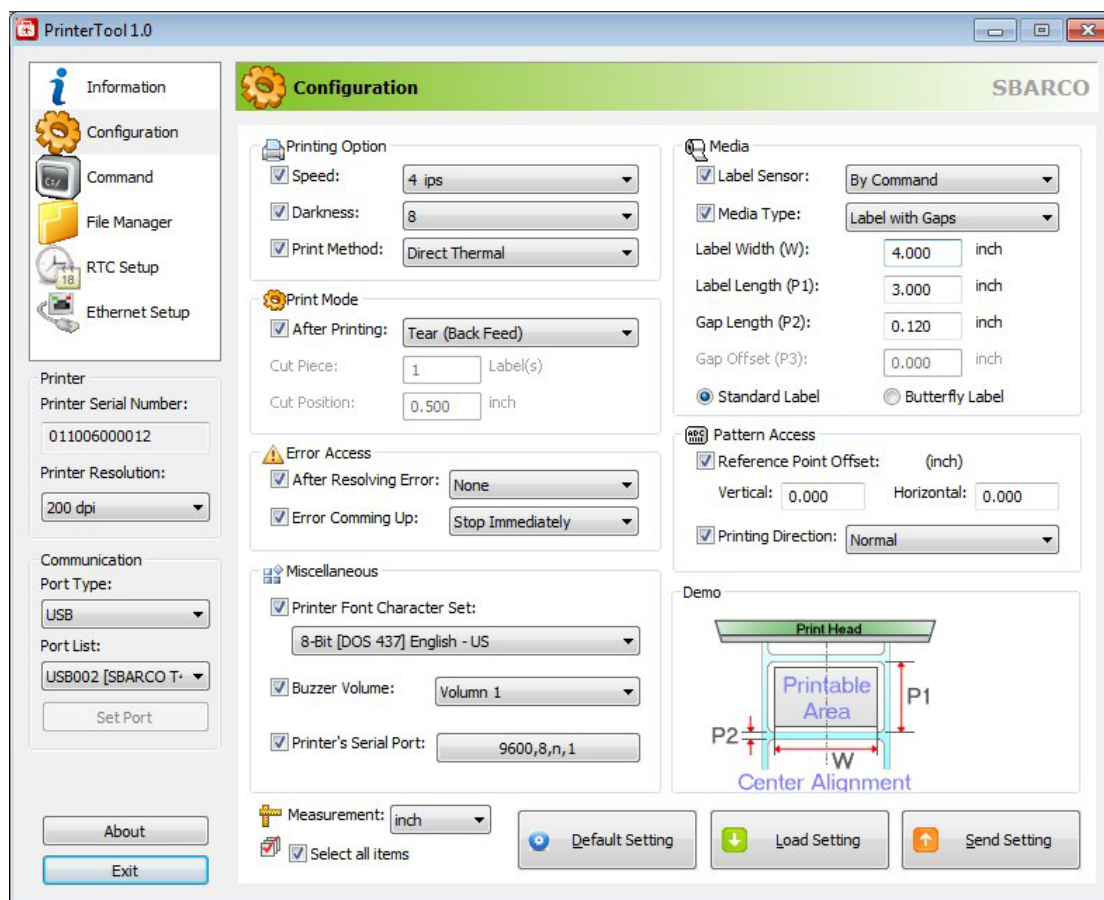
Those applications support the following operation systems:

Operation Environment	Architecture
Windows XP	i386
Windows Server 2003	i386/ amd64
Windows Vista / Windows Server 2008	i386/ amd64
Windows 7 / Windows Server 2008R2	i386/ amd64

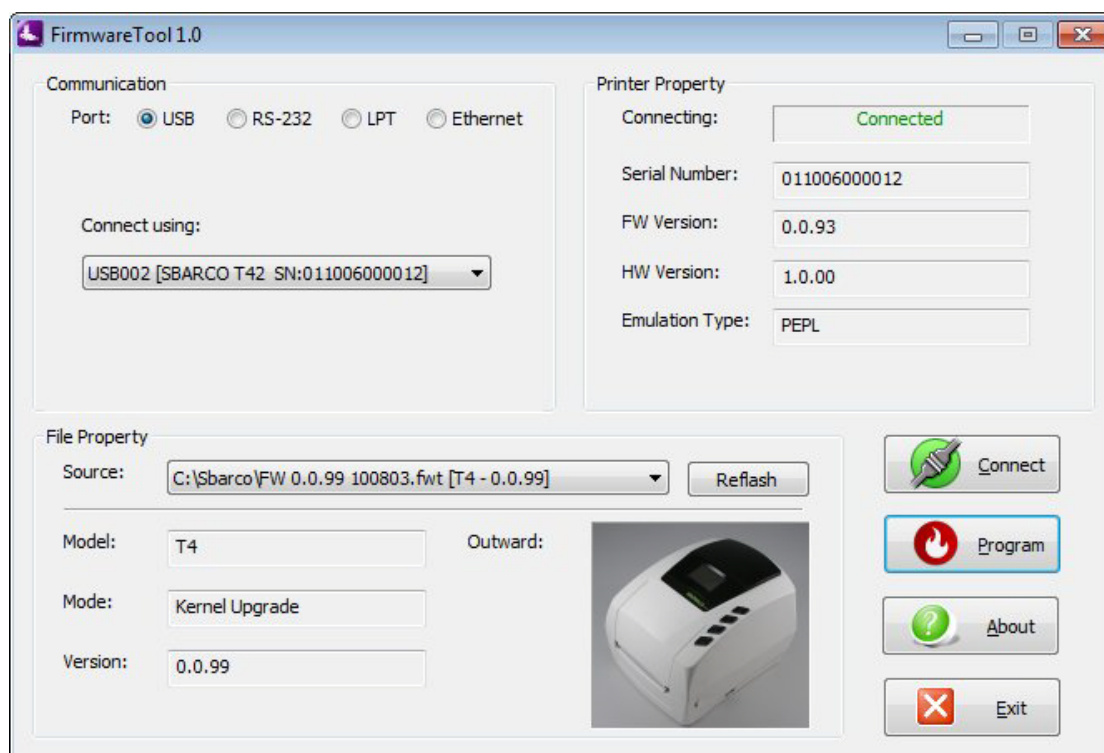
● BarDrawer Outlook



● PrinterTool Outlook



● FWTool Outlook



How to install BarDrawer Application

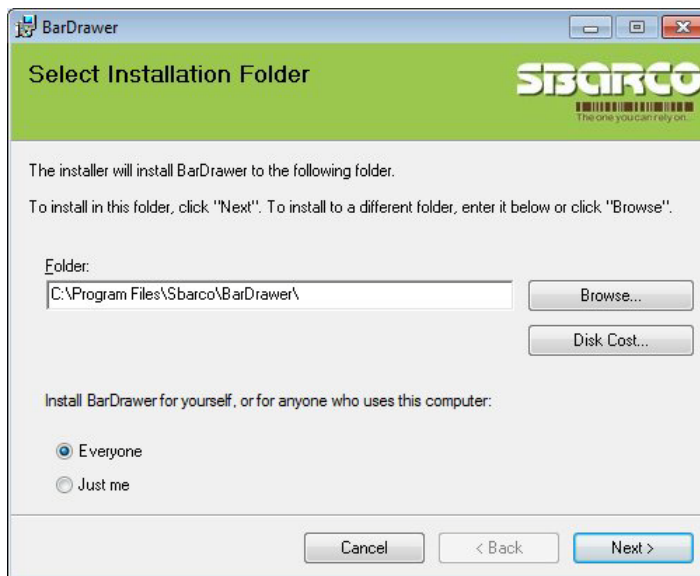
1. Execute the “BarDrawer1.0.0.msi” installation file. You can find it in the “CD-ROM root”. You have to uninstall the previous version before installation.



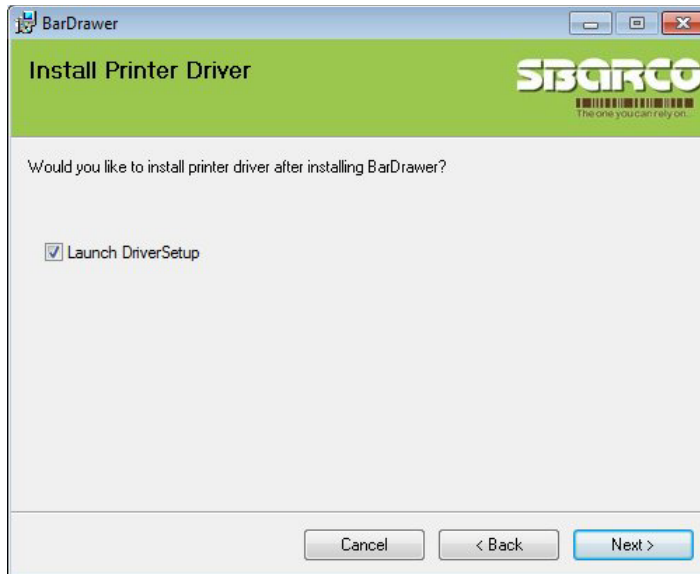
2. After clicking the icon, it will show below screen. Then click “Next>”.



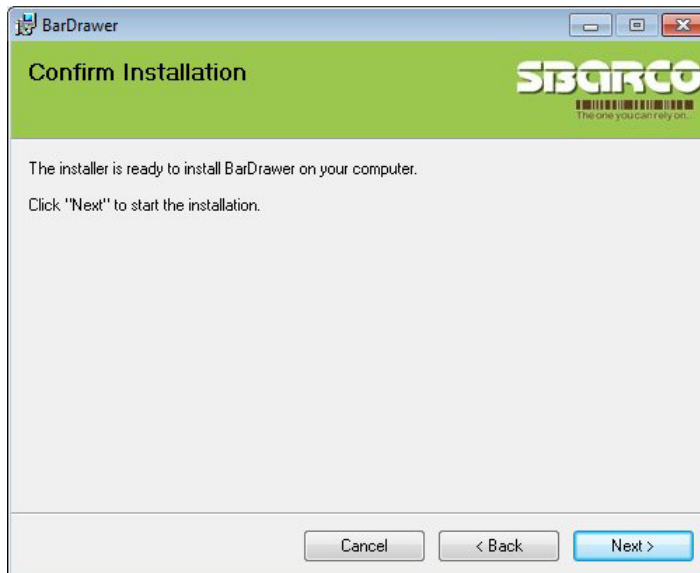
3. Select installation folder. Then click “Next>”.



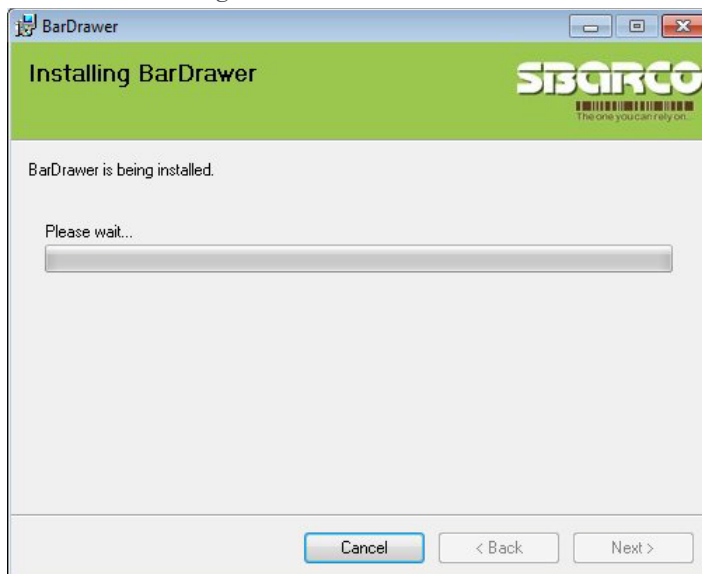
4. Cross check box to install the printer driver. Then click “Next>”.



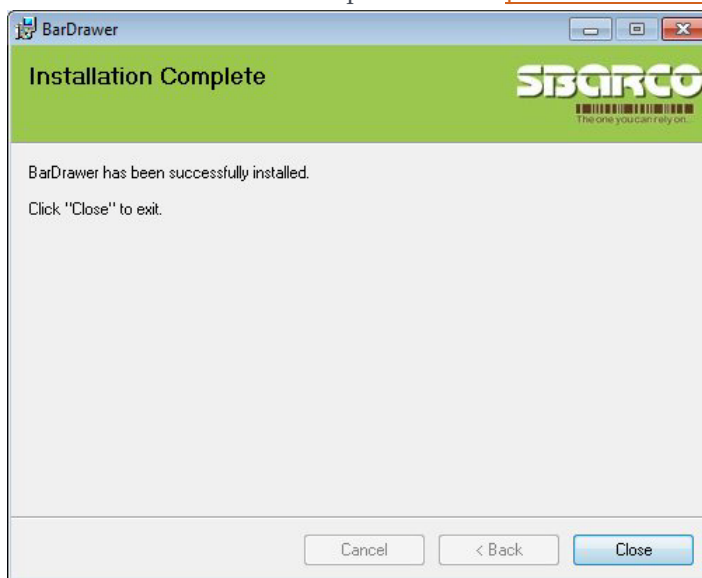
5. Click “Next” to confirmation the installation.



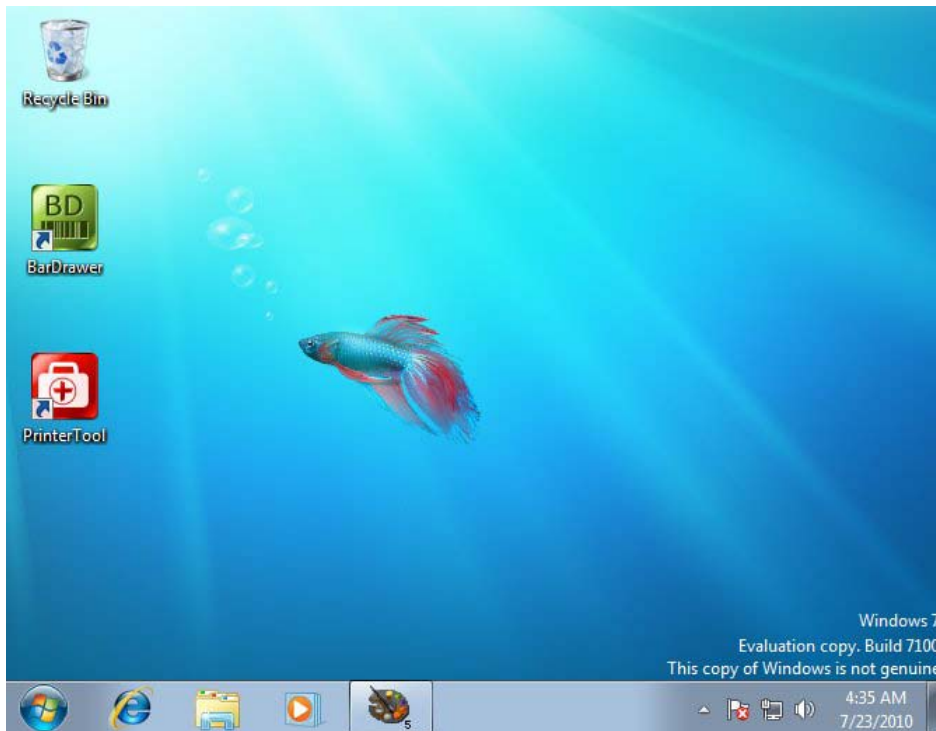
6. Wait for installing.



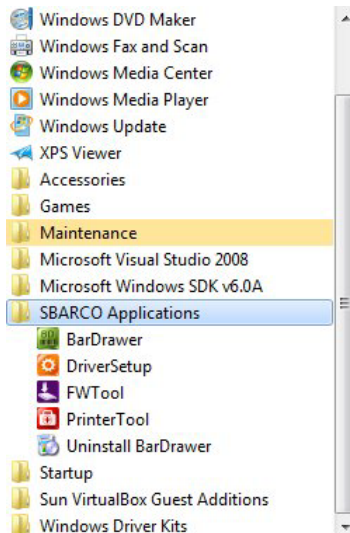
7. Installation complete. Then click "Close". If you have selected the "launch DriverSetup", the printer driver installation will be started after bardrawer is installed. You can refer the procedure of [printer driver installation](#).



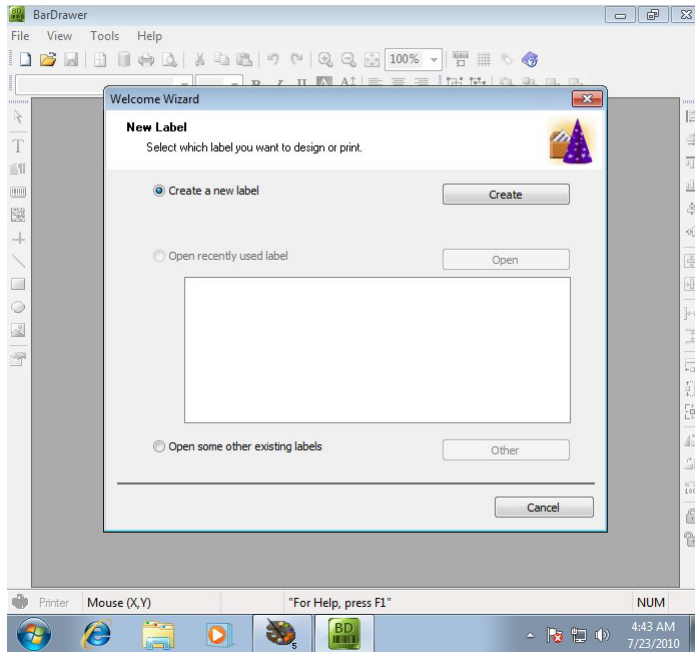
- After installation, you can see the application icons on the desktop and program folder list.



- Press the start button to see the program list.

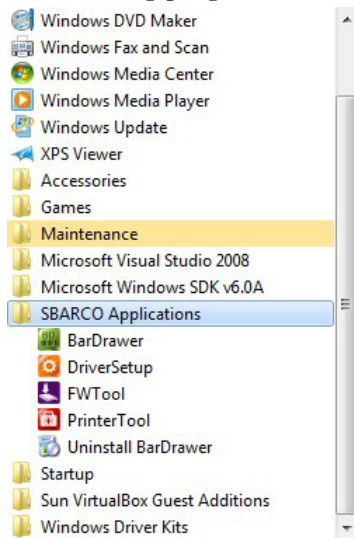


10. Click the bardrawer icon to start the application.

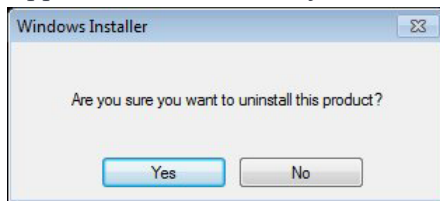


How to Uninstall BarDrawer Application

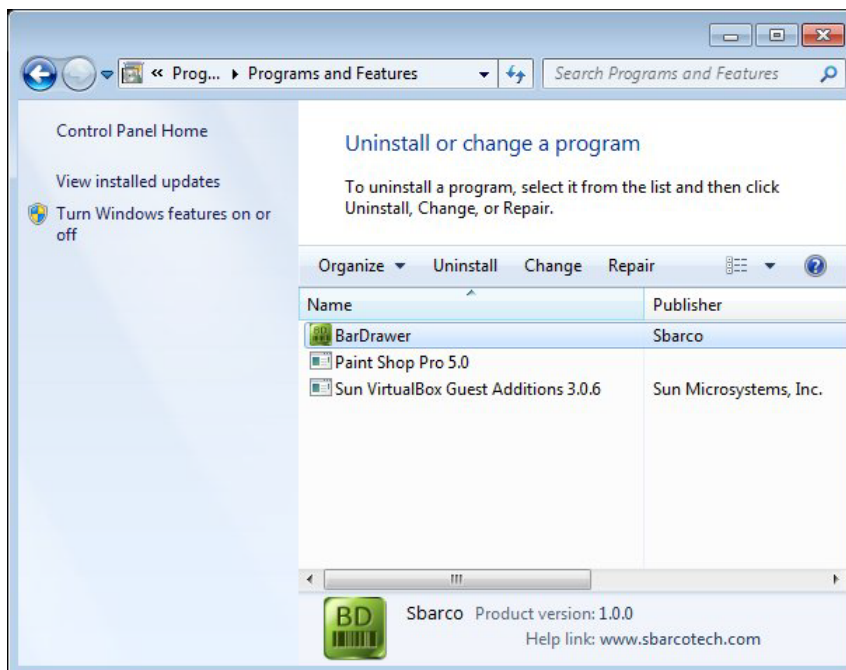
- 1 Use “Start\All Program\SBARCO Application\Uninstall BarDrawer” to uninstall.
 - 1.1 Click the icon of “Uninstall BarDrawer” at program folder list to execute the uninstalling program.



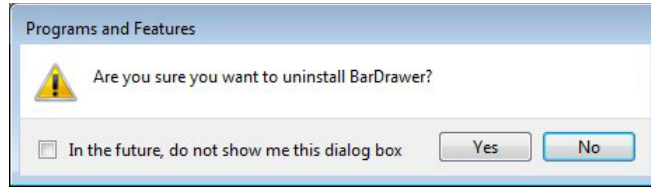
- 1.2 Appears a screen to ask you whether you do uninstall this product. Click “Yes”.



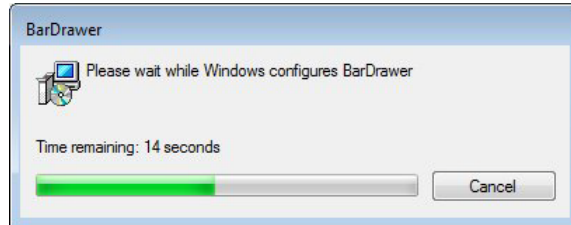
- 2 Use “Start\Control Panel\Uninstall a Program” to uninstall.
 - 2.1 Choose the icon of “BarDrawer” to execute the uninstall procedure. Click “Uninstall” Button.



2.2 Click “Yes” to confirm the un-installation.



2.3 Progress running.



PRINTER DRIVER

Now we only provide Microsoft windows driver. This driver supports the following operation systems with different processor architecture.

The interface supports for Serial, Parallel, USB and TCP/IP.

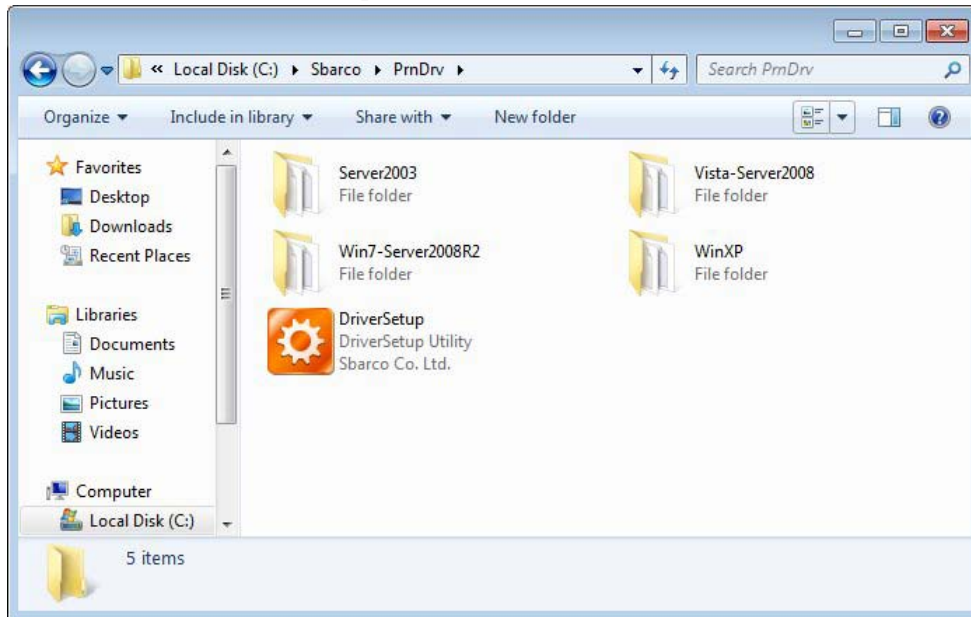
Path	Directory	Architecture	Operation Environment
PrnDrv\ WinXP\ Server2003\ Vista-Server2008\ Win7-Server2008R2	WinXP\ Server2003\ Vista-Server2008\ Win7-Server2008R2	i386 i386/ amd64/ ia64 i386/ amd64/ ia64 i386/ amd64/ ia64	Windows XP Windows Server 2003 Windows Vista Windows Server 2008 Windows 7 Windows Server 2008R2

You can find the folder of PrnDrv at "CD-ROM root" or "C:\Sbarco". If you install the BarDrawer application, the printer driver material will copy to "C:\Sbarco" after installing.

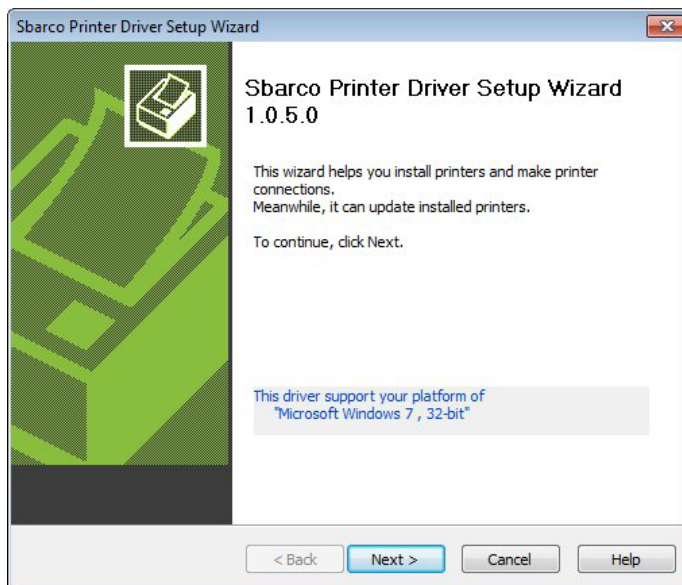
The every property page of the printer driver can refer [Printer Driver Settings](#).

Install by DriverSetup

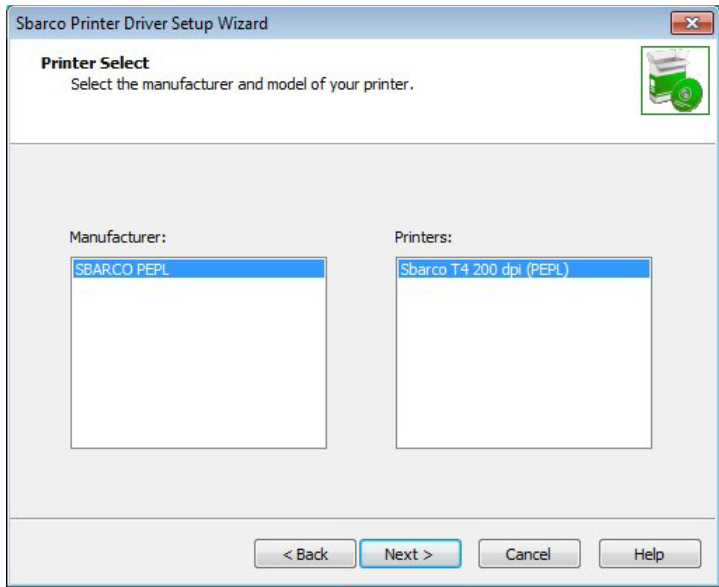
1. Press the icon of “DriverSetup” to start the installation.



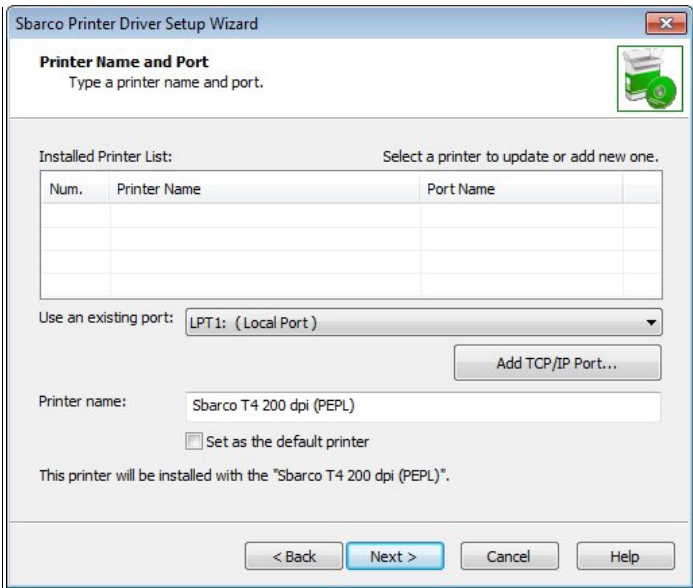
2. Click “Next” to start the installation.



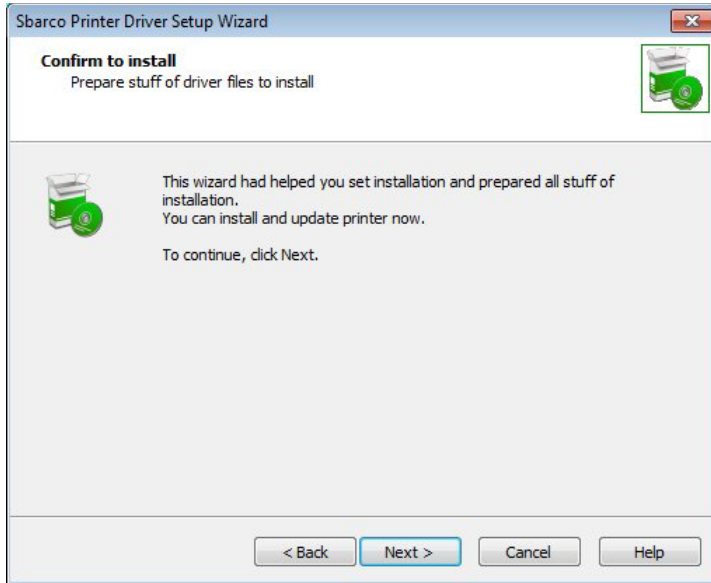
3. Select the manufacture and printer. Click “Next>”.



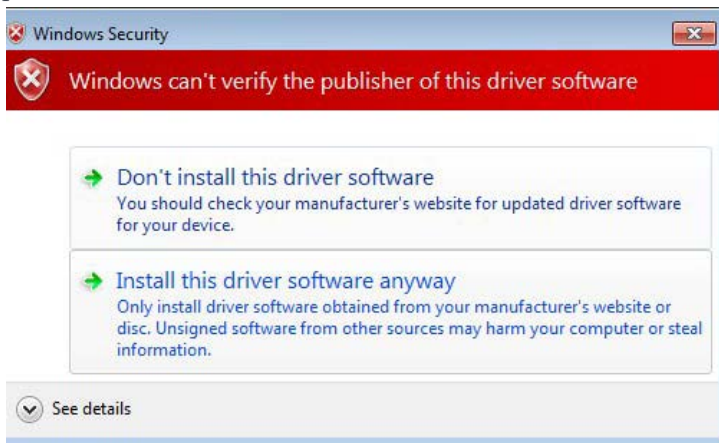
4. Set printer name, connection port and default printer. The list below will show all the Sbarcode printer drivers you have installed. Printer name is unique and cannot be repeated.



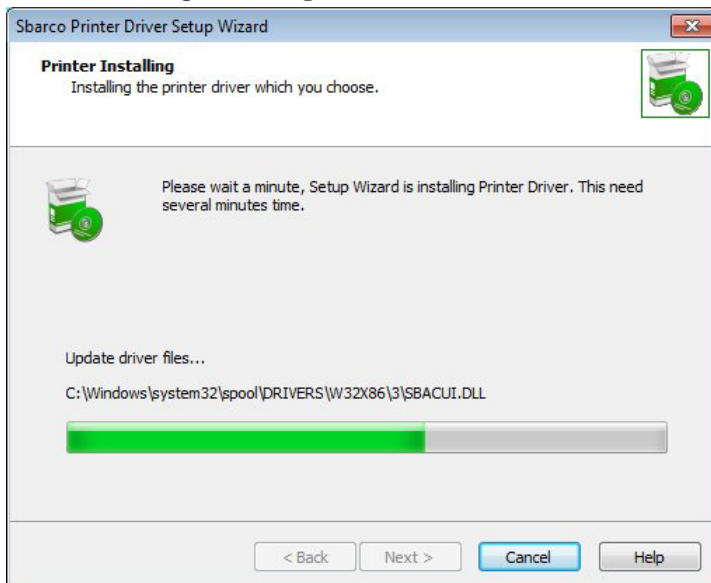
5. Confirm to install. Click “Next>”.



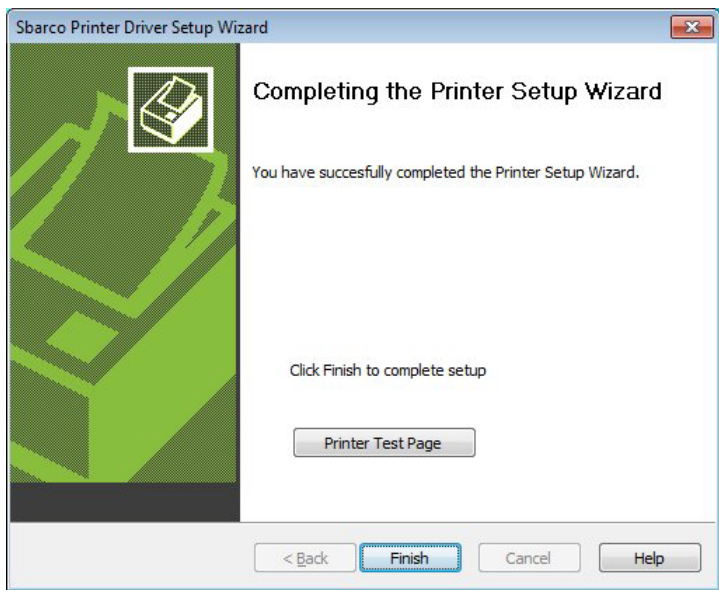
6. The OS will show a warning dialogue to ask you if the installation is confirmed to proceed.



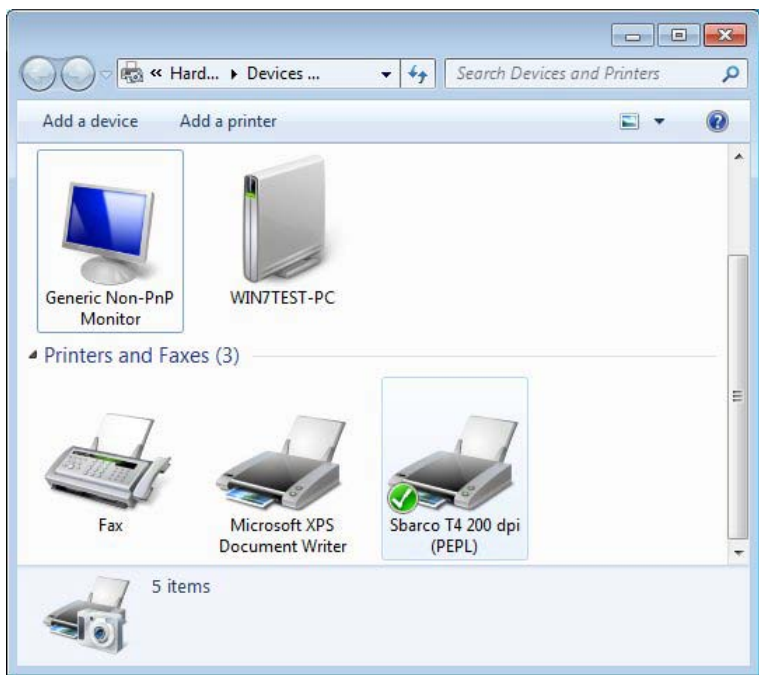
7. Installation is proceeding.



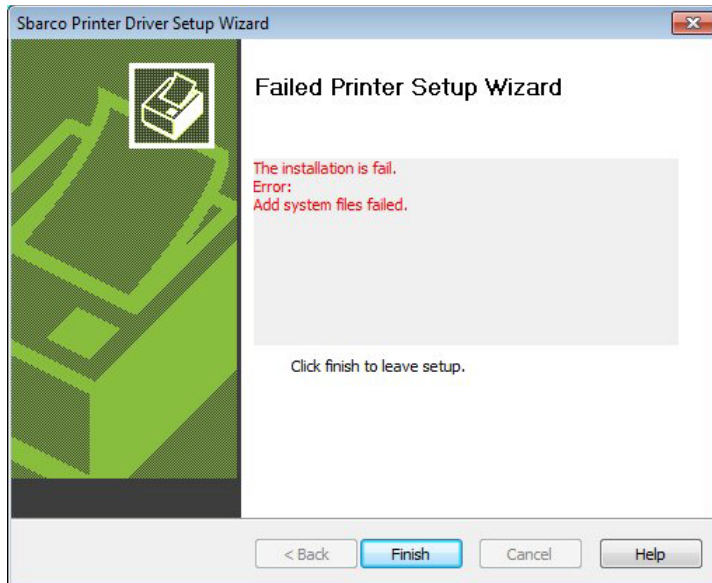
- 8. Installation is complete. Click “Printer Test Page” to make printer print a test page. Click “Finish”.



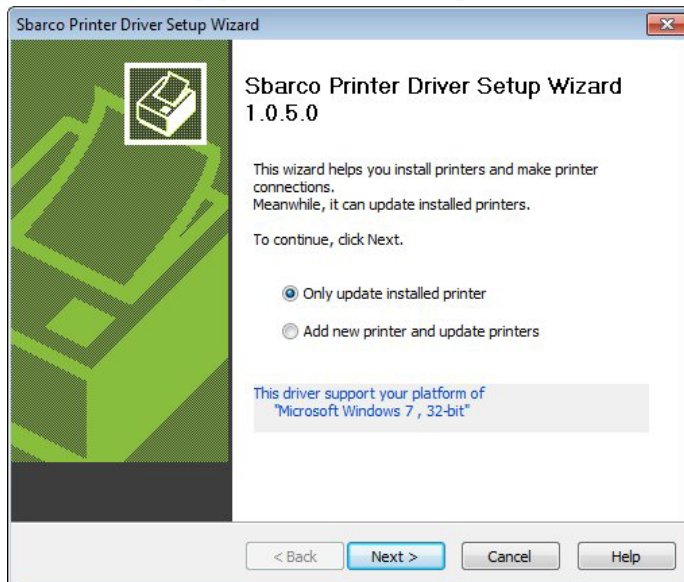
- 9. You can check “Start\Devices and Printers” to confirm if Sbarco printer driver is installed or not.



10. If error occurs during the installation, the screen will show the error message.



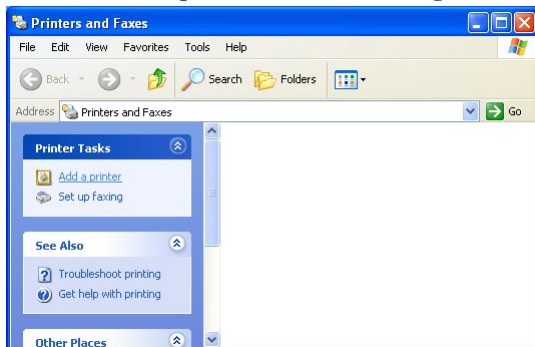
11. The DriverSetup provides a way to update all the Sbarco printer drivers.



Install through Wizard of Add Printer

1. For Window XP

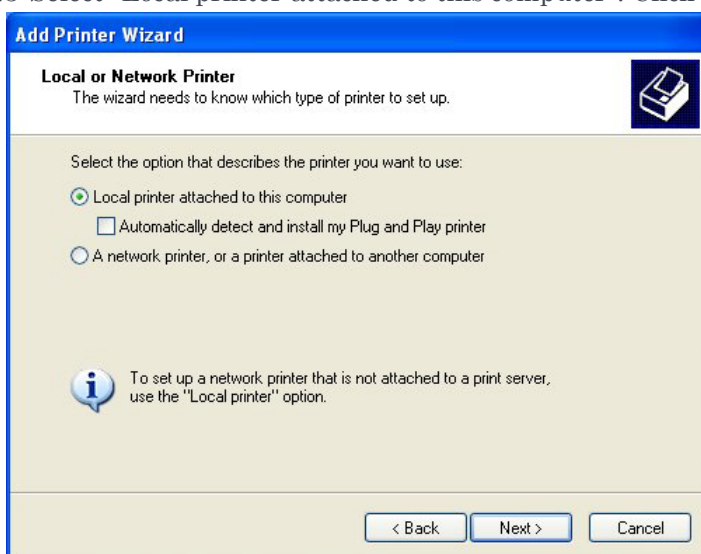
1.1 Run “Add a printer” wizard though the “Printers and Faxes” folder.



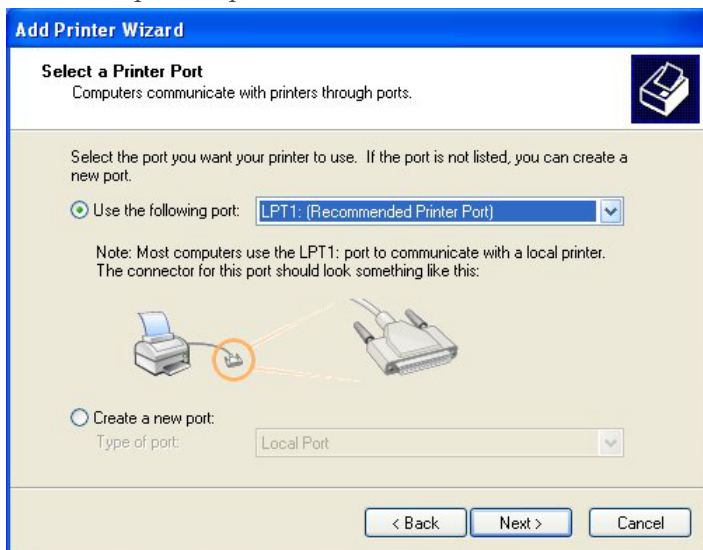
1.2 Click “Next>”.



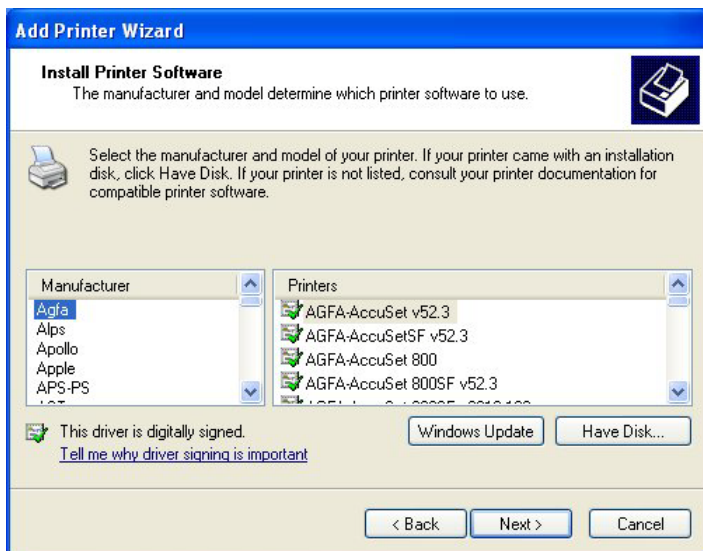
1.3 Select “Local printer attached to this computer”. Click “Next>”.



1.4 Select a printer port. Click “Next>”.



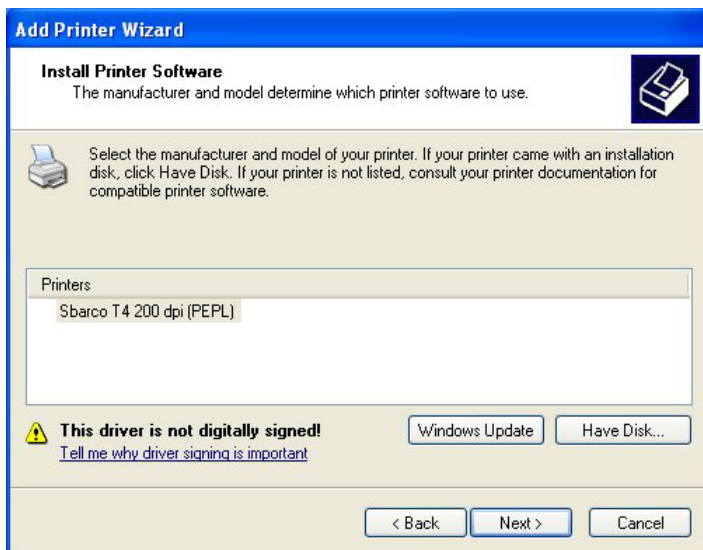
1.5 Click “Have Disk...”.



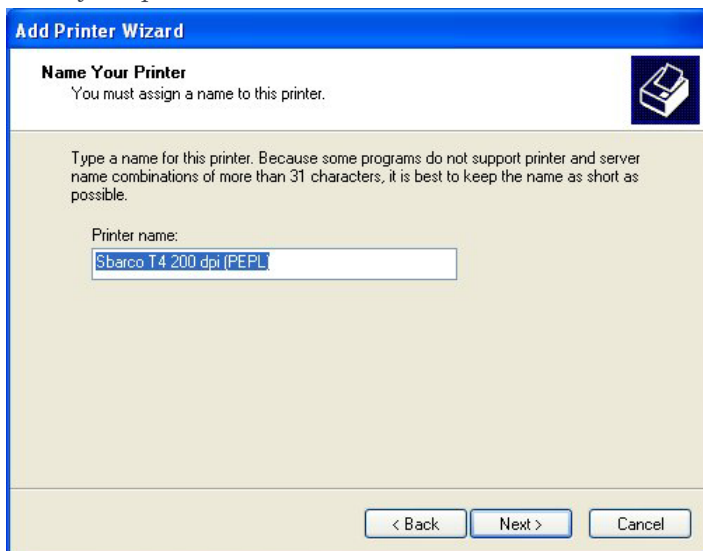
1.6 Specify the folder where the printer driver is saved. Ex: “C:\Sbarco\PrnDrv\WinXP”.



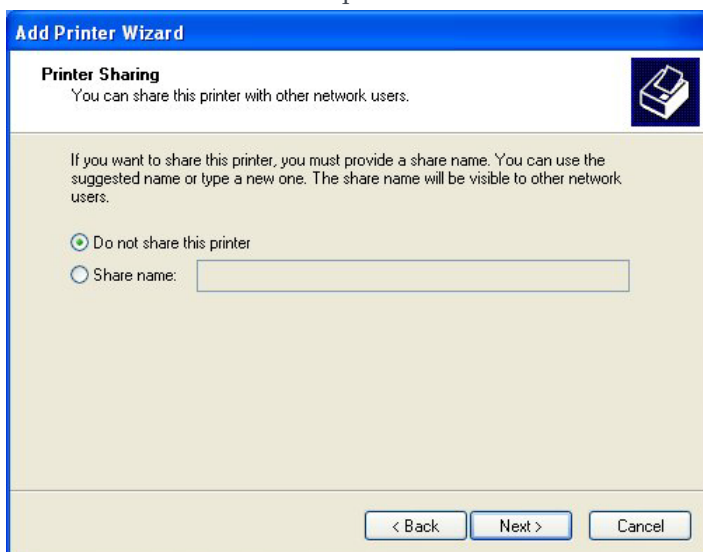
1.7 Click “Next>”.



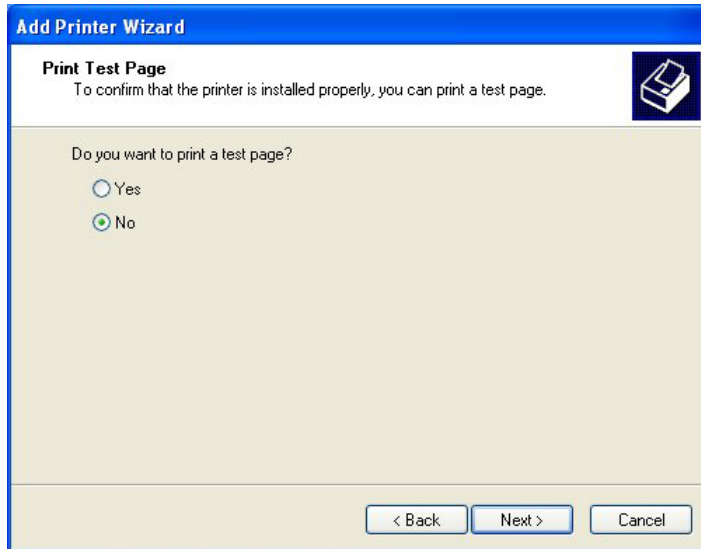
1.8 Set your printer name. Click “Next>”.



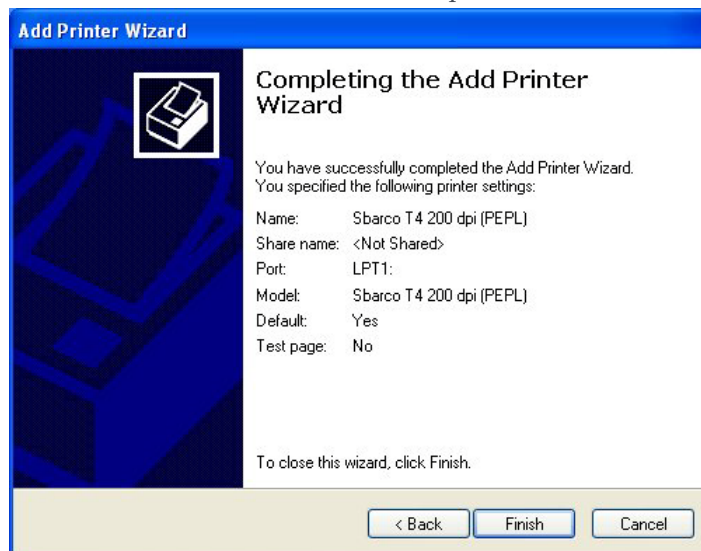
1.9 Select “Do not share this printer”. Click “Next>”.



1.10 If you want to print a test page, select "Yes". Click "Next"



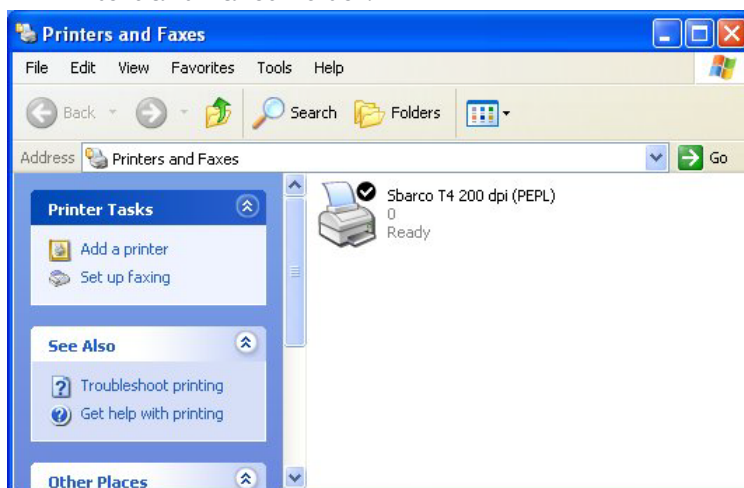
1.11 Click "Finish" to move to next step.



1.12 Click "Continue Anyway" to ignore below message and complete the installation.



1.13 After installation, you will see the “Sbarco T4 200 dpi (PEPL)” icon in the “Printers and Faxes” folder.

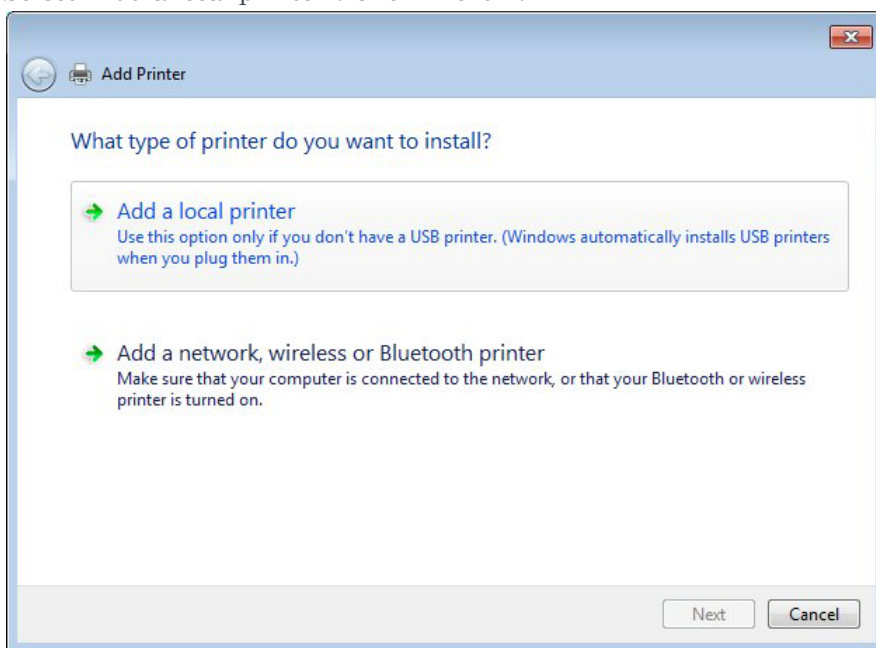


2. For Window 7

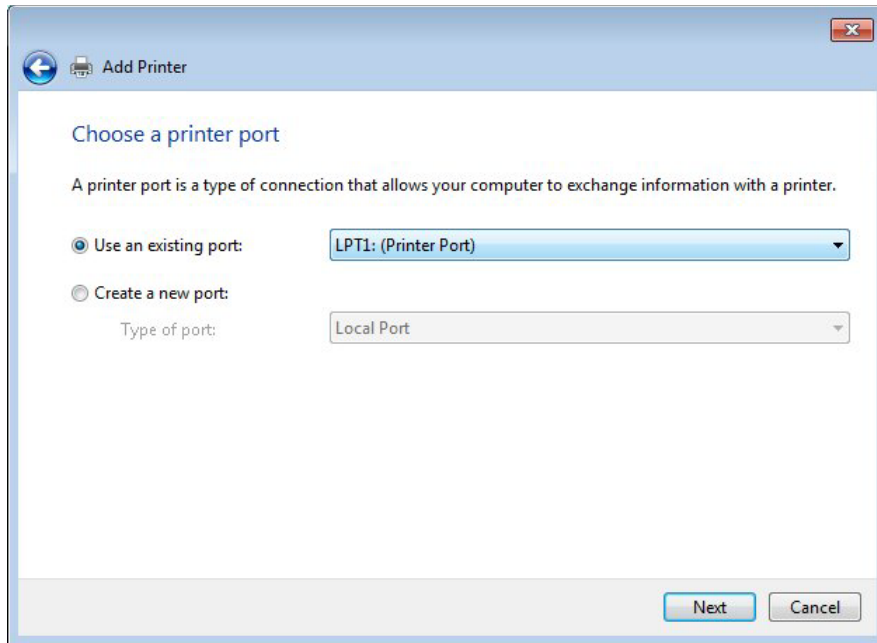
2.1 Run “Add a printer” wizard though the “Devices and Printers” folder.



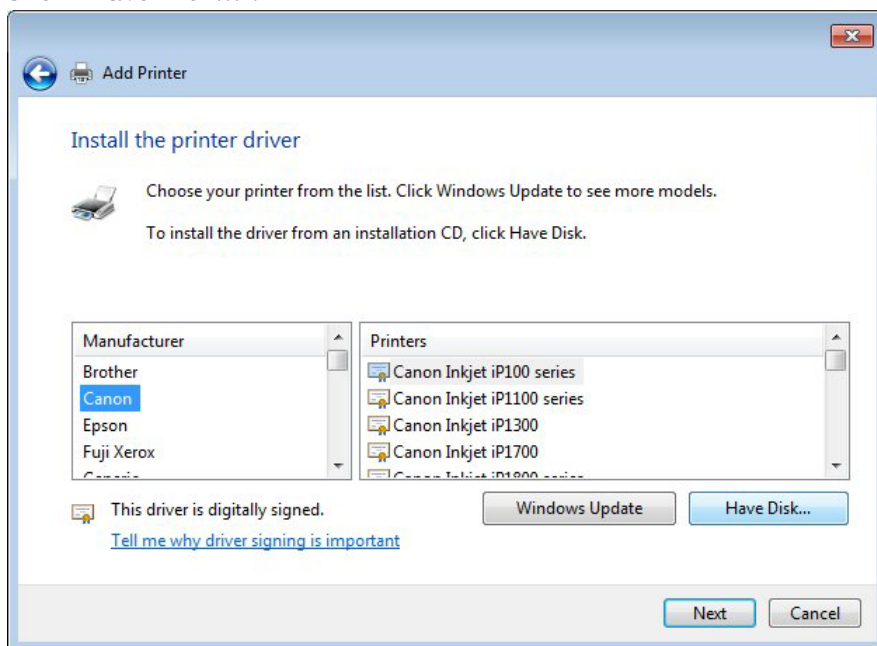
2.2 Select “Add a local printer”. Click “Next>”.



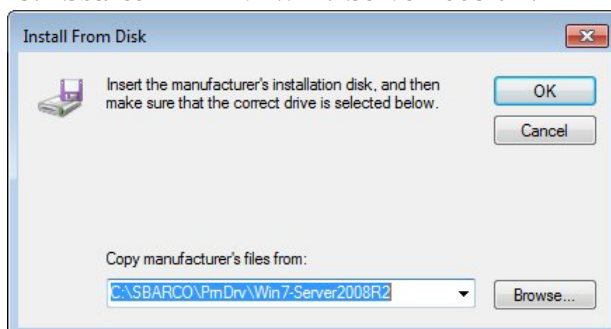
2.3 Select the port. Click “Next>”.



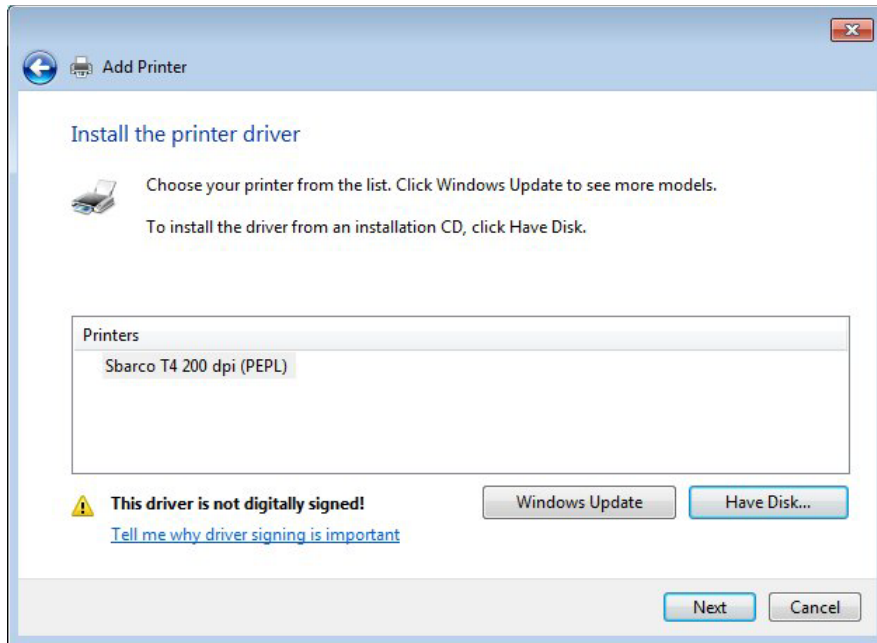
2.4 Click “Have Disk...”.



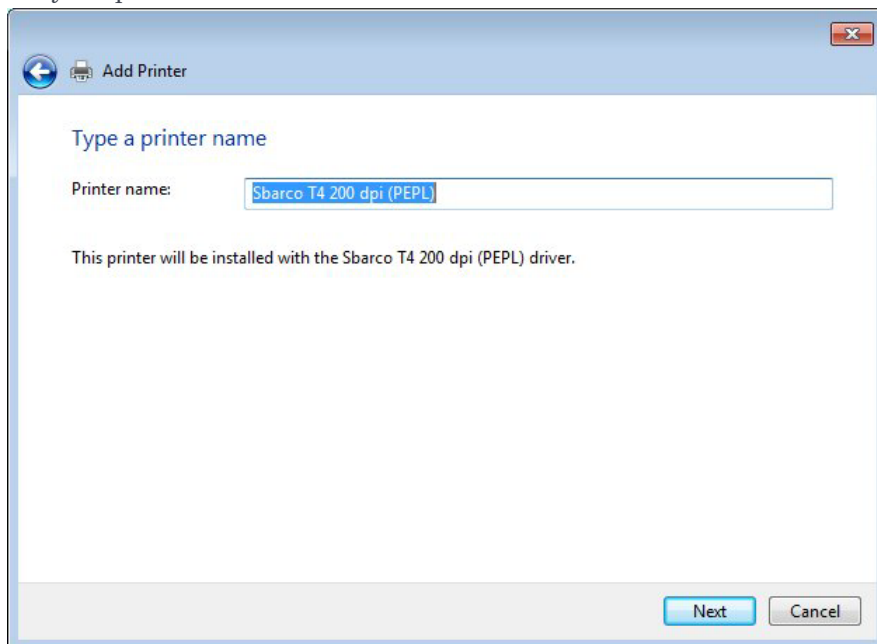
2.5 Specify the folder where the printer driver is saved. Ex: “C:\Sbarco\PrnDrv\Win7-Server2008R2”.



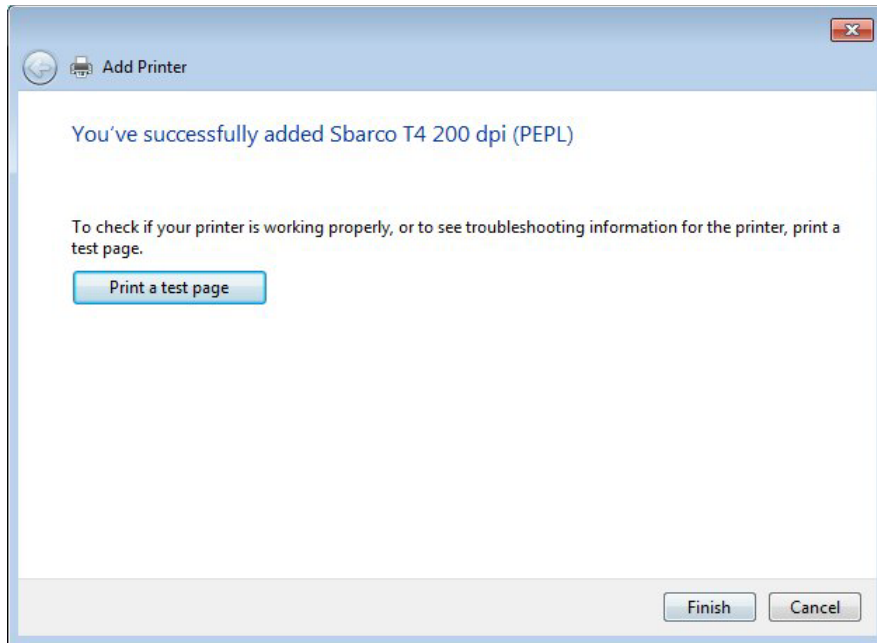
2.6 Click “Next>”.



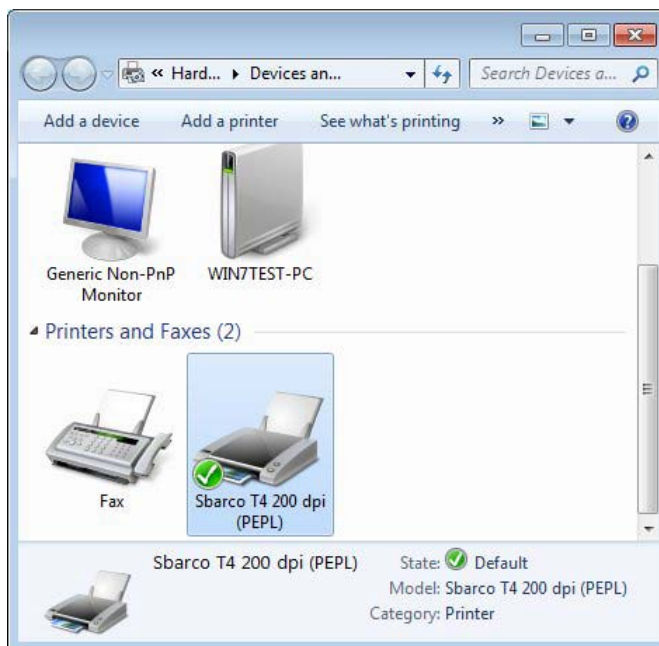
2.7 Set your printer name. Click “Next>”.



2.8 Click “Finish” to complete the installation.



2.9 After installation, you will see the “Sbarco T4 200 dpi (PEPL)” icon in the “Devices and Printers” folder.



Install through plug and play (available on USB)

1 For Window XP

- 1.1 When you connect the printer with USB cable to the PC, the PC will detect the event of USB plug-in.



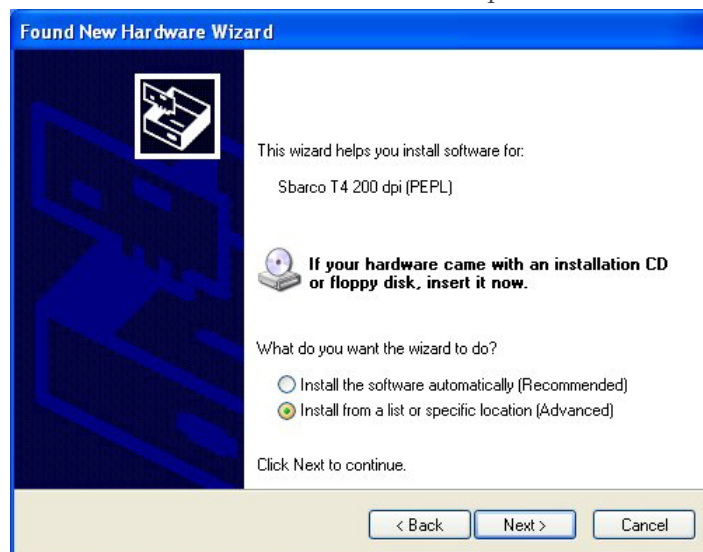
- 1.2 The OS will run the hardware wizard.



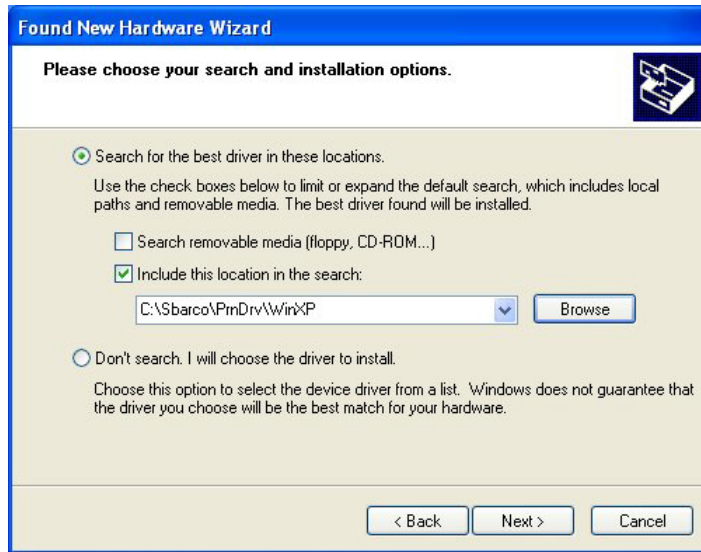
- 1.3 You choose the radio button of “Yes, this time only” to start the driver installation procedure. Click “Next>” to next step.



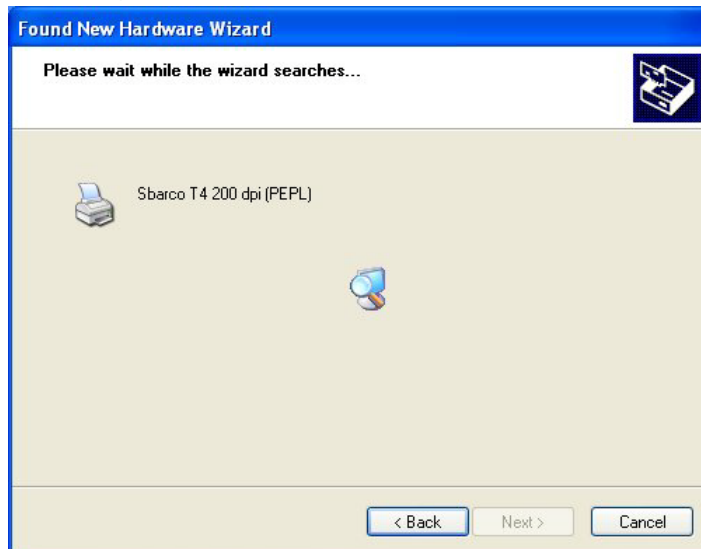
- 1.4 Then you can see the printer name on the top of dialog. And choose the radio button of “Install from a list or specific location (Advanced)” to find the printer driver source. Click “Next>” to next step.



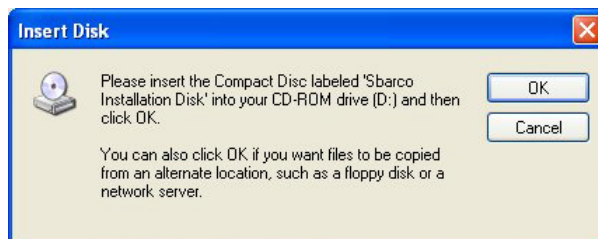
- 1.5 Select the "Search for the best driver in these locations" and "Include this location in the search:". Click "Browse..." and select the folder where the printer driver is saved (C:\Sbarco\PrnDrv\WinXP). Click "Next>" to next step.



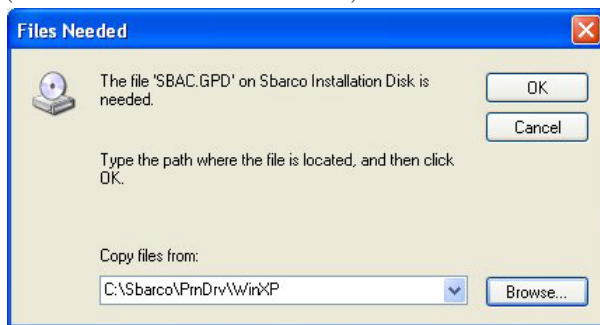
- 1.6 Searching...



- 1.7 Click "OK" to next screen.



- 1.8 Click "Browse..." and select the folder where the printer driver is saved (C:\Sbarco\PrnDrv\WinXP). Click "OK" to next step.



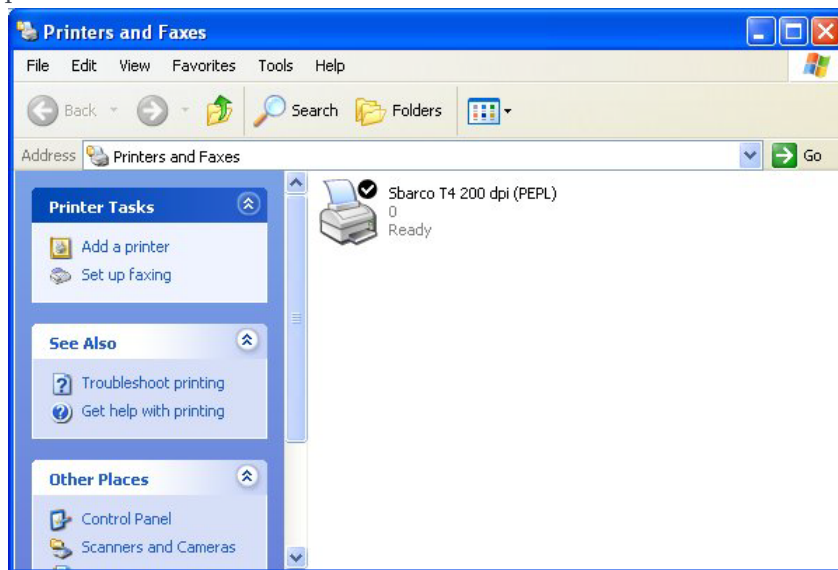
- 1.9 Installing...



- 1.10 Click "Finish" to complete the installation.

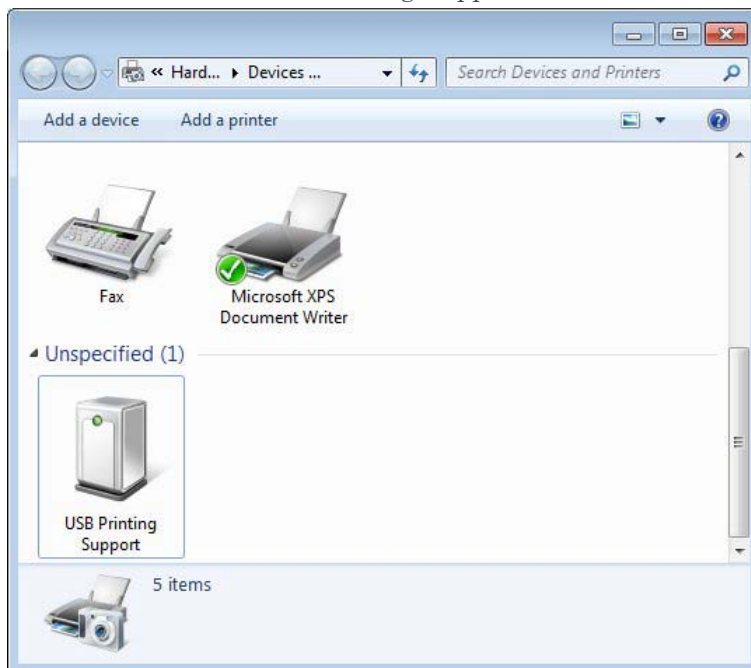


- 1.11 You can check “Start\Printers and Faxes” folder to confirm your sbarco printer driver.

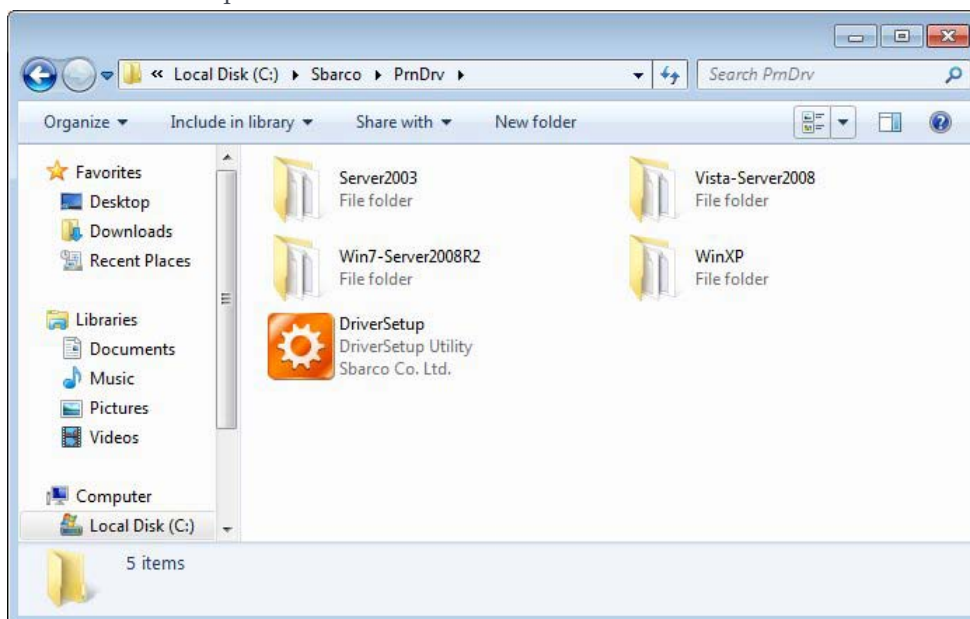


2 For Window 7

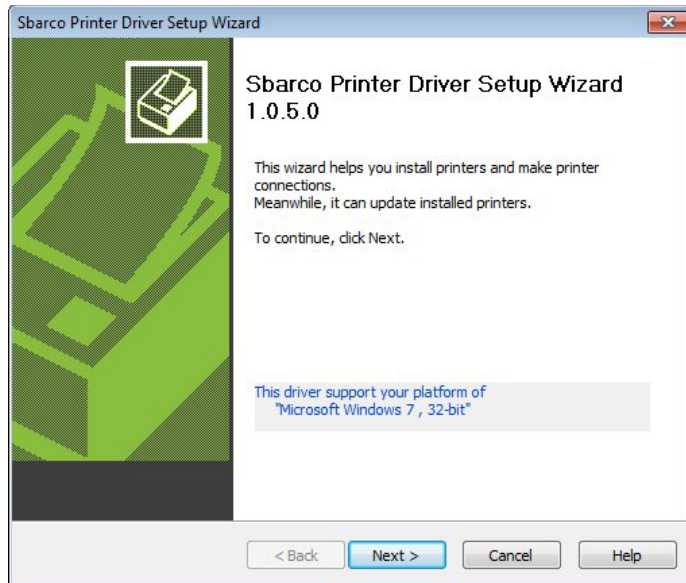
2.1 When the printer connects with PC via USB, the “Devices and printers” folder will show a icon of “USB Printing Support”.



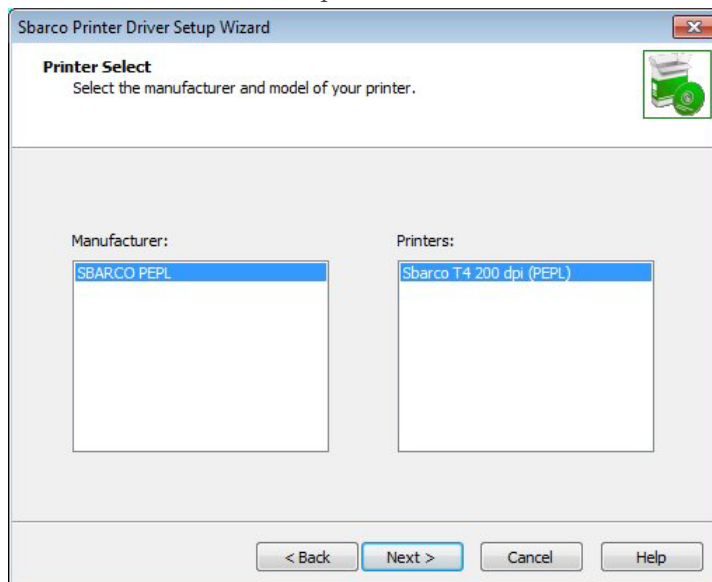
2.2 Click “DriverSetup” to install driver at Win7.



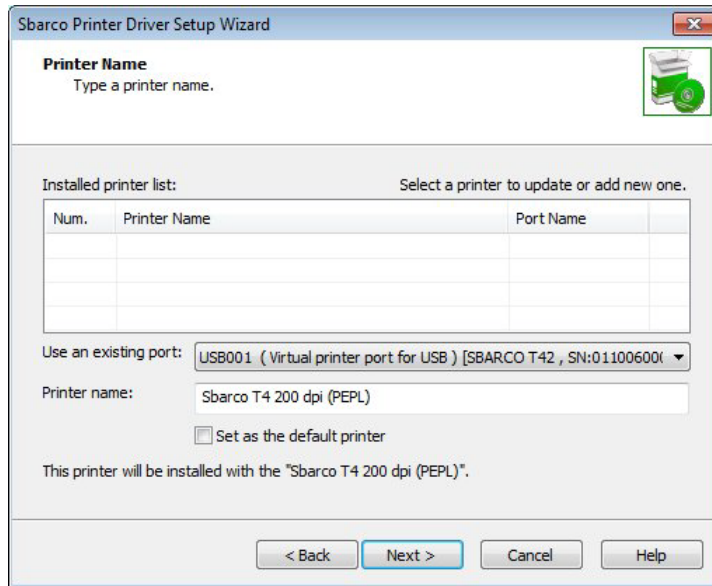
2.3 Click “Next>” to next step.



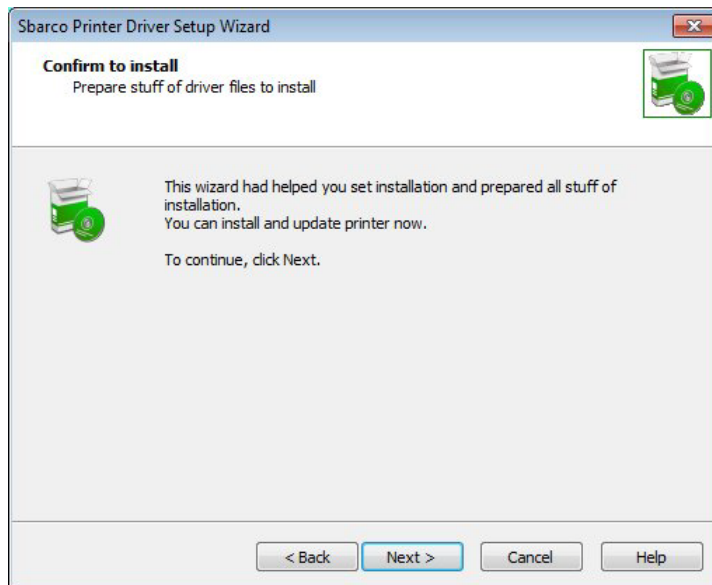
2.4 Choose manufacture and printer. Click “Next>”.



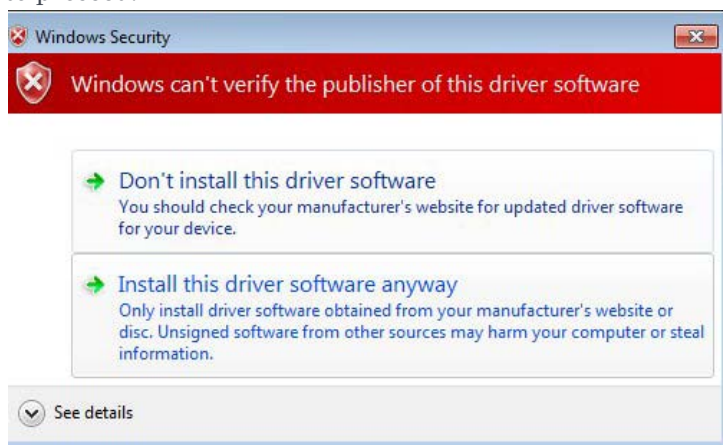
- 2.5 Set a printer name, connection port and default printer. The list below will show all the Sbarco printer drivers you have installed. Printer name is unique and cannot be repeated.



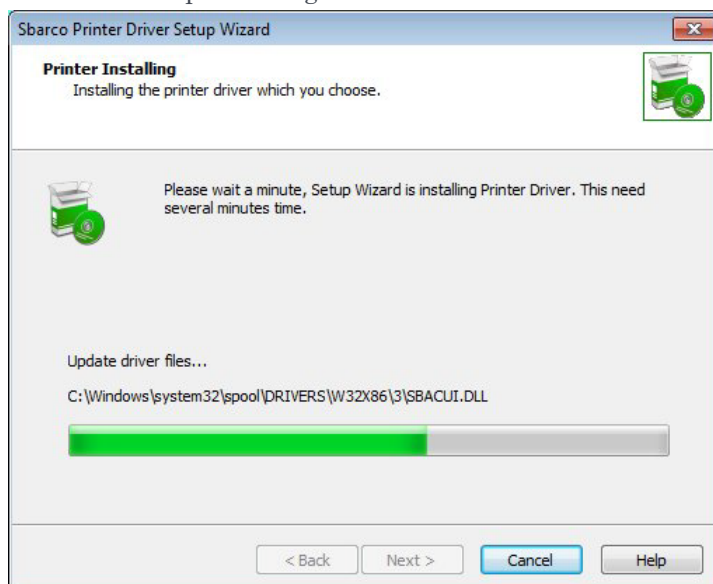
- 2.6 Confirm to install. Click "Next>".



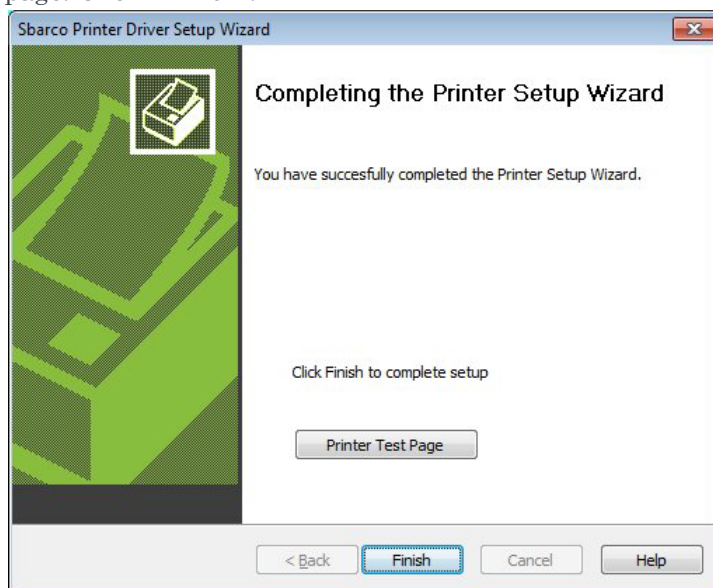
- 2.7 The OS will show a warning dialogue to ask you if the installation is confirmed to proceed.



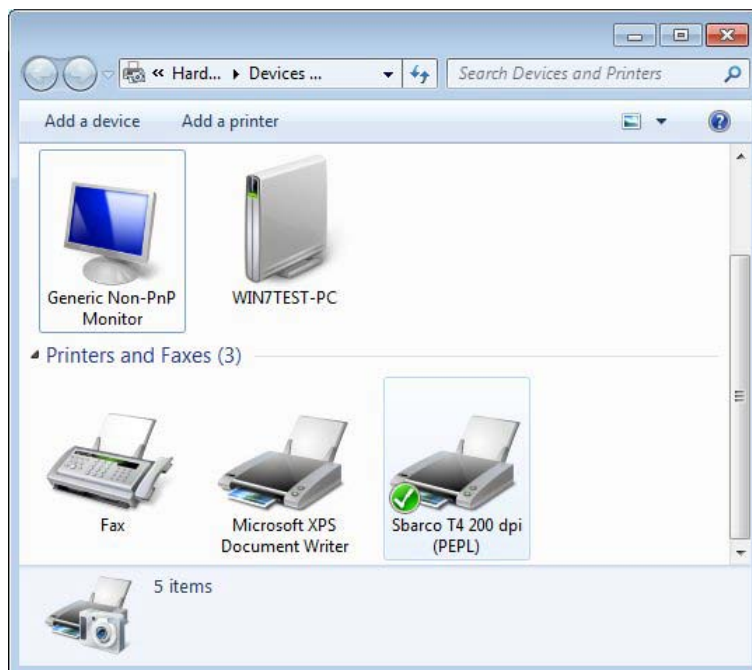
- 2.8 Installation is proceeding.



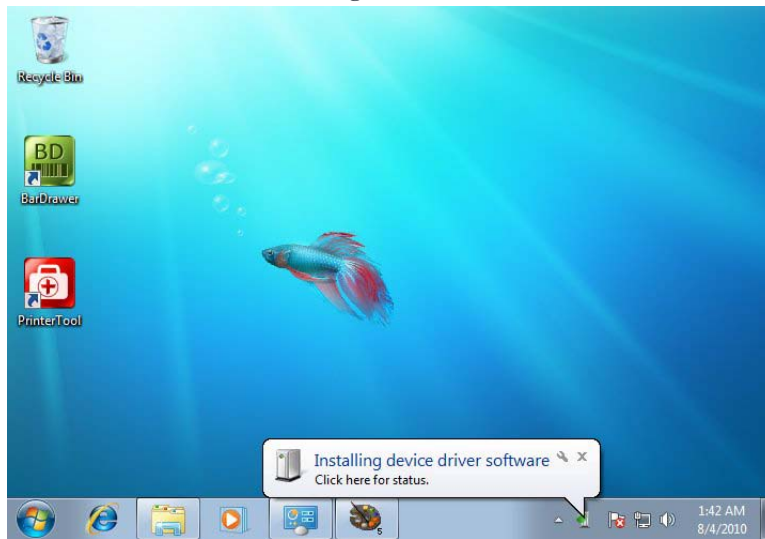
2.9 Complete installation. Click “Printer Test Page” to make printer print a test page. Click “Finish”.



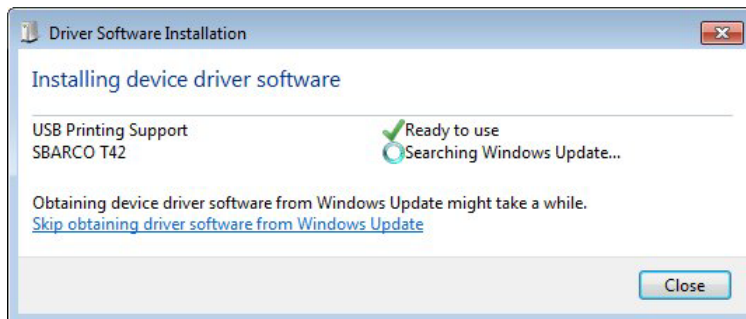
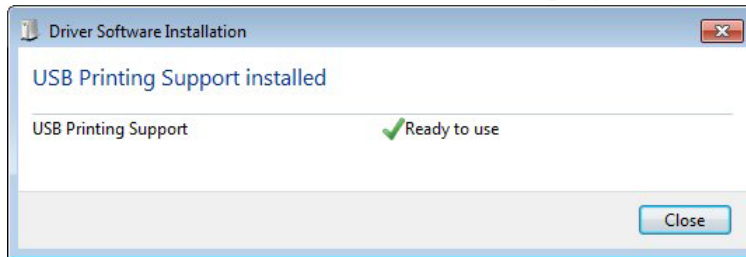
2.10 You can check “Start\Devices and Printers” to confirm your sbarco printer driver.



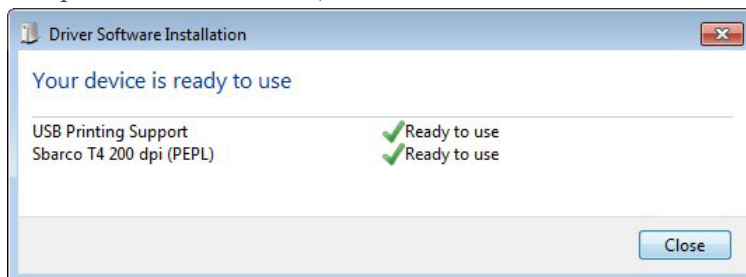
2.11 If you add second usb printer driver, the Win-7 will run the automatic installation. Click “Installing device driver software”.



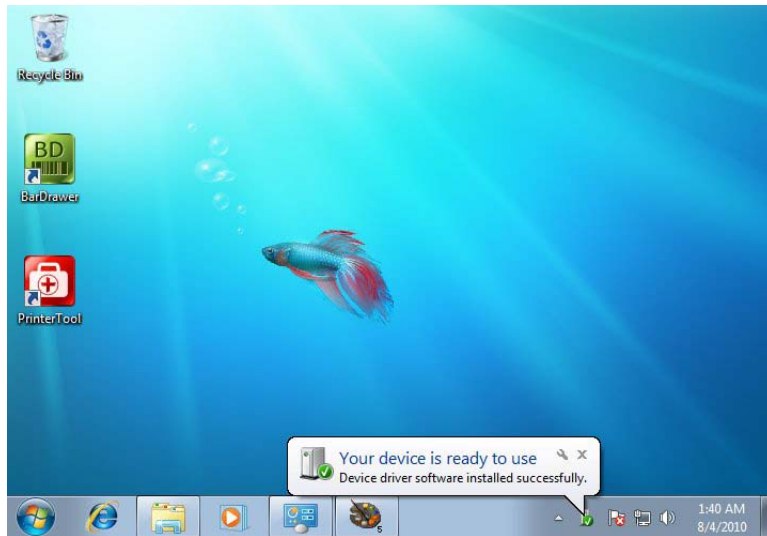
2.12 A dialogue box will indicate the installation progress.



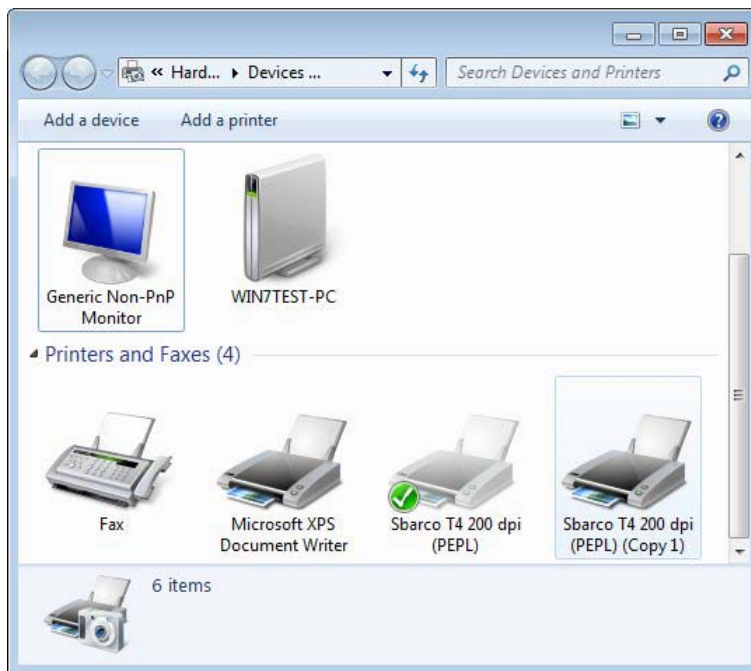
2.13 Complete the installation, Click “Close”.



2.14 You can see a message to remind you the finish of installation.



2.15 You can check “Start\Devices and Printers” to confirm your sbarco printer driver.



Install TCP/IP port (available on Ethernet)

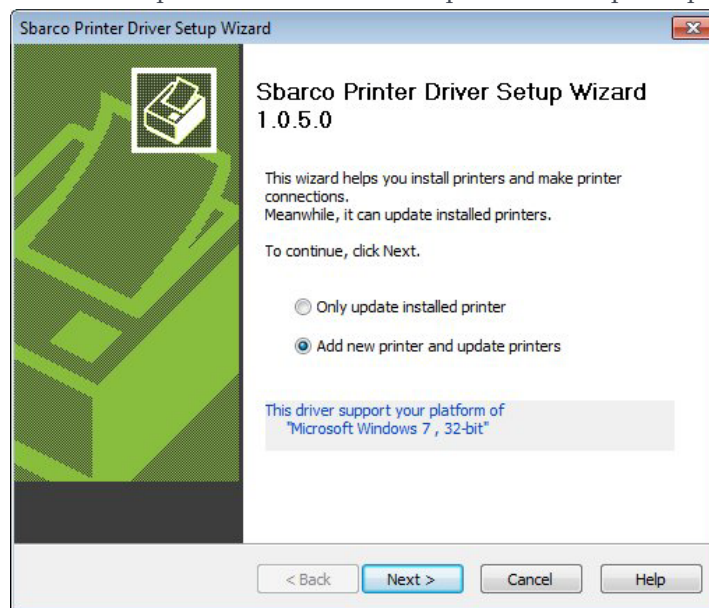
If you buy an Ethernet printer server, you can follow below procedure to install TCP/IP port printer driver.

The “Sbarco Printer Driver Setup Wizard” supports the TCP/IP installation from driver version 1.0.5.0 and DriverSetup 1.4 .

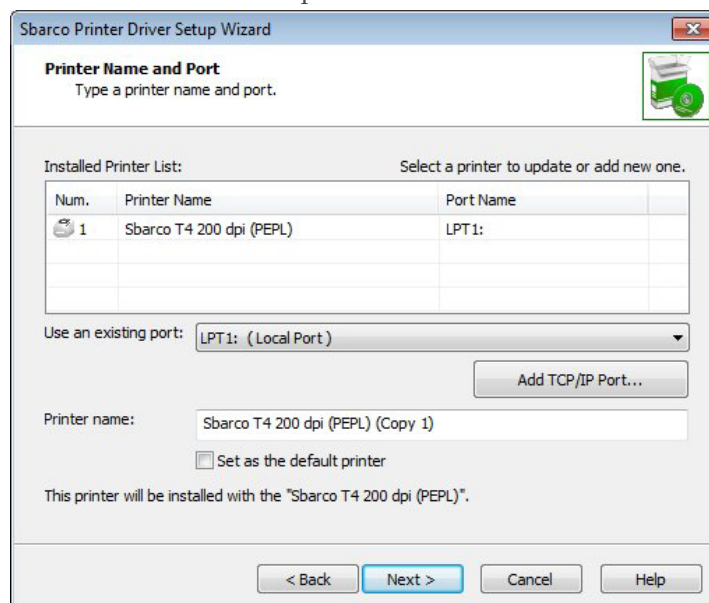
Here introduce only Window 7 installation procedure, other OS can refer this procedure.

1 Through DriverSetup to install.

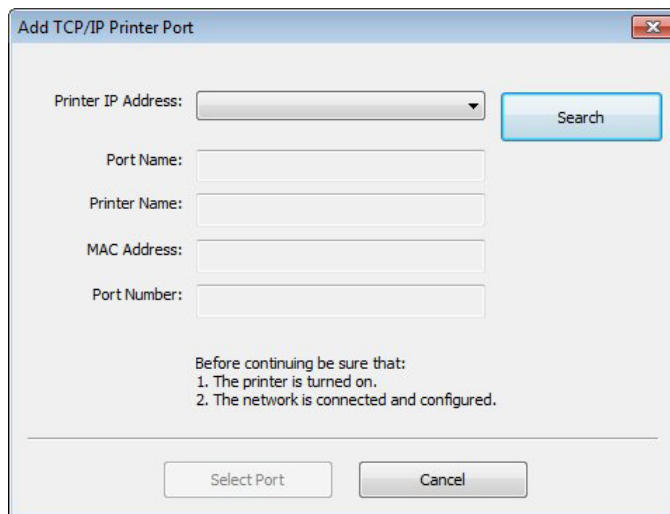
2.1 When the printer connects with PC via TCP/IP, you can execute the “DeviceSetup” and select “Add new printer and update printers”.



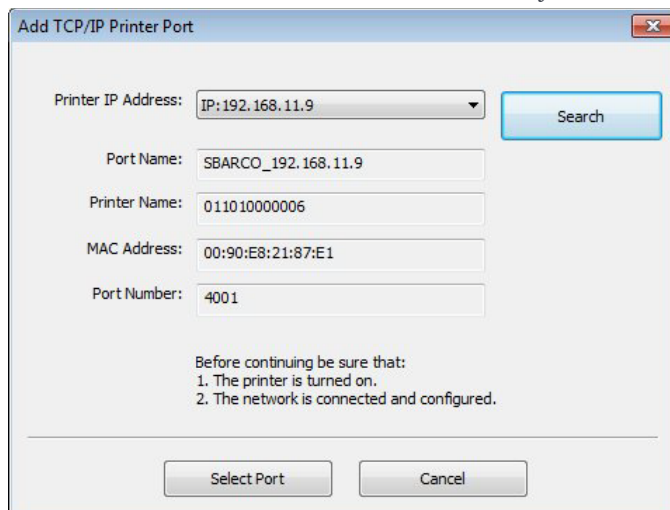
2.2 When the page “Printer Name and Port” appears, you can press “Add TCP/IP” button to add a TCP/IP port.



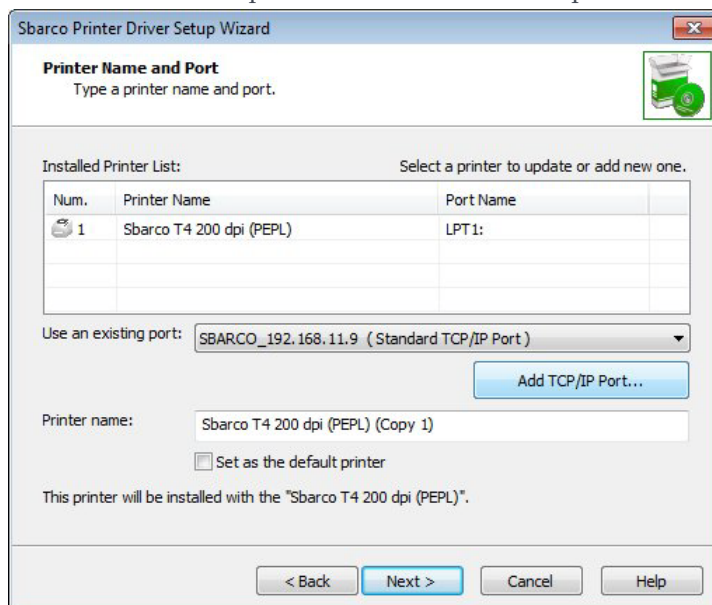
2.3 You can search all Sbarco Ethernet printer server in your intranet by “Search” button.



2.4 After searching, the utility will list all IP address of Sbarco Ethernet printer server in the Printer IP Address box. Then you can choose one to add a port.

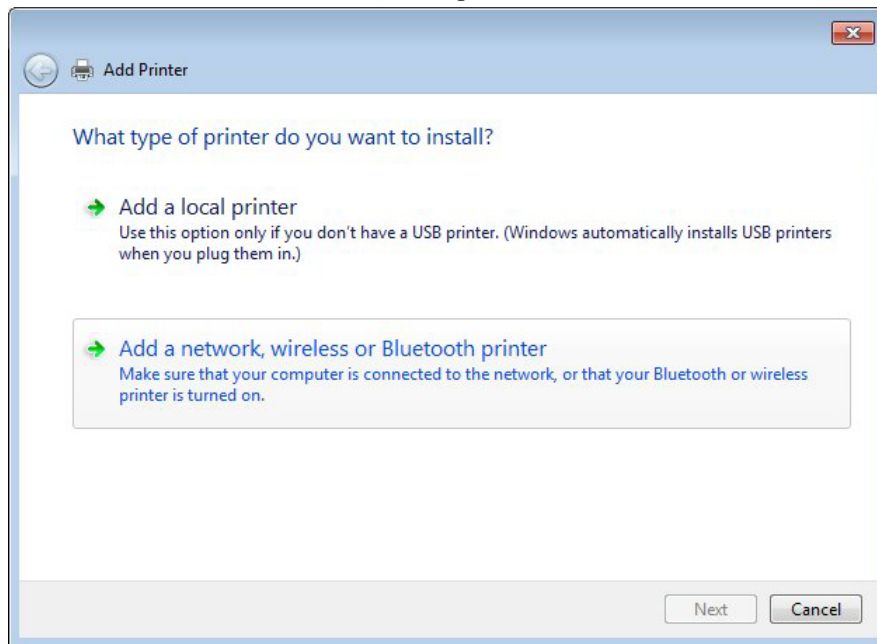


2.5 After adding, the “use an existing port” box will select a TCPIP port that you added before. Then press “Next” to finish last procedure.

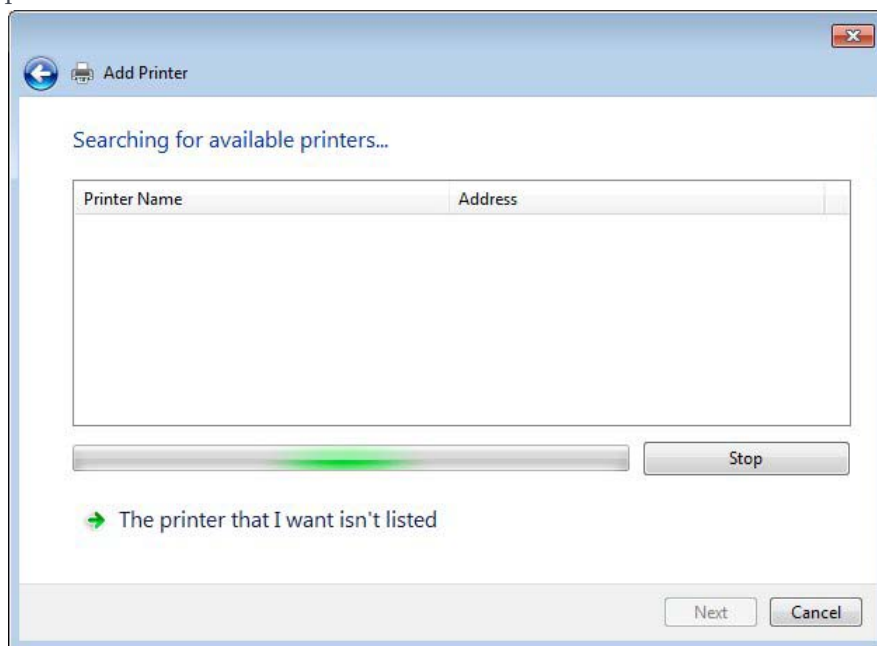


2 Through Add a printer to install.

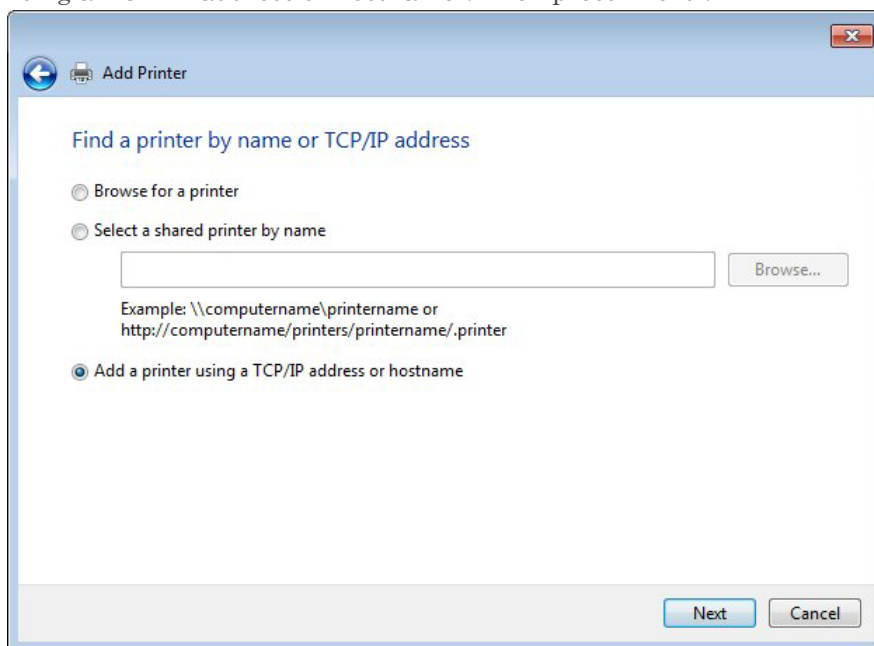
2.6 Select the Add a network item, then press next.



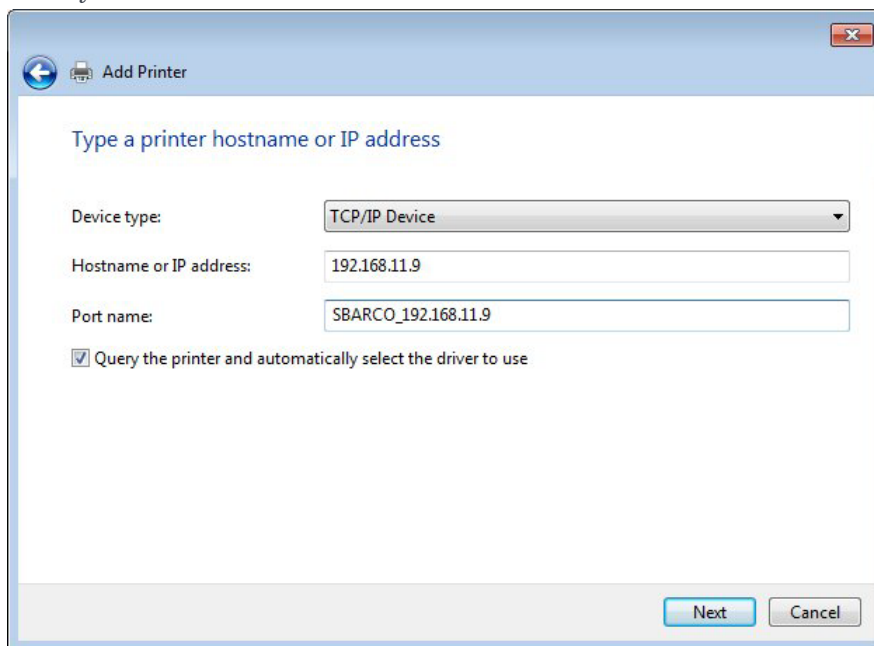
2.7 In this page, please press stop button to interrupt searching, then press “The printer that I want isn’t listed”.



2.8 In “Find a printer by name or TCP/IP address” page, choose “Add a printer using a TCP/IP address or hostname”. Then press “Next”.

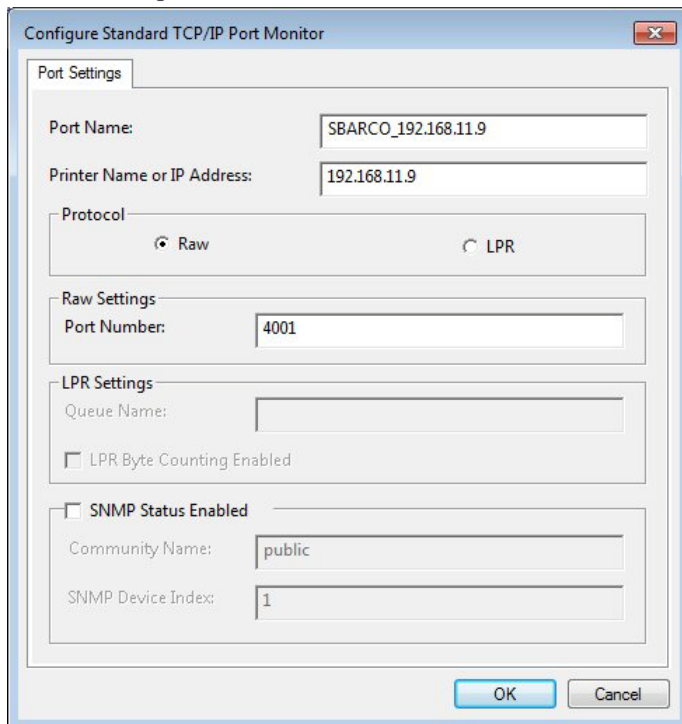


2.9 Select “TCP/IP Device” type and enter IP address you have known and port name you want.

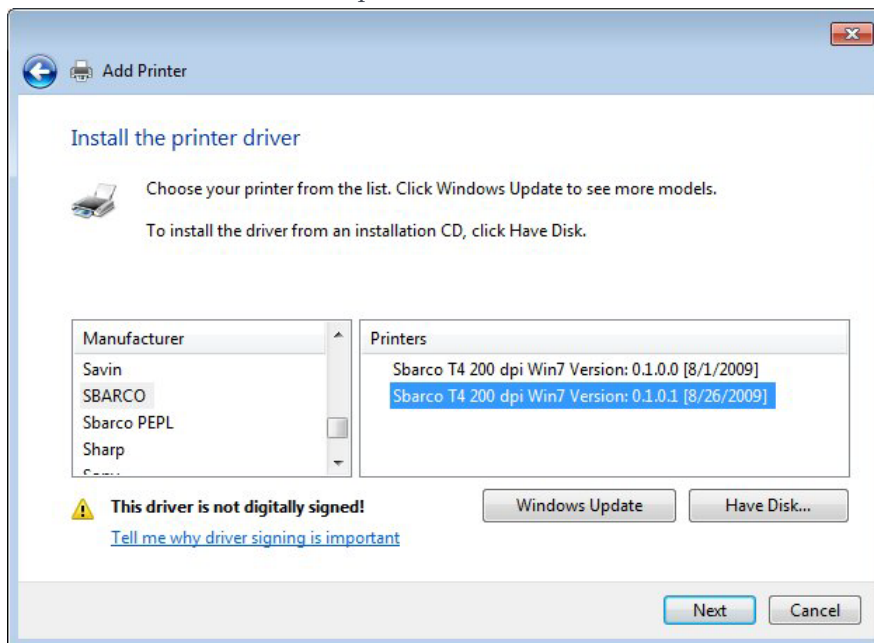


(Note: You could also use Ethernet setup function in “Printer tool” to get the IP address)

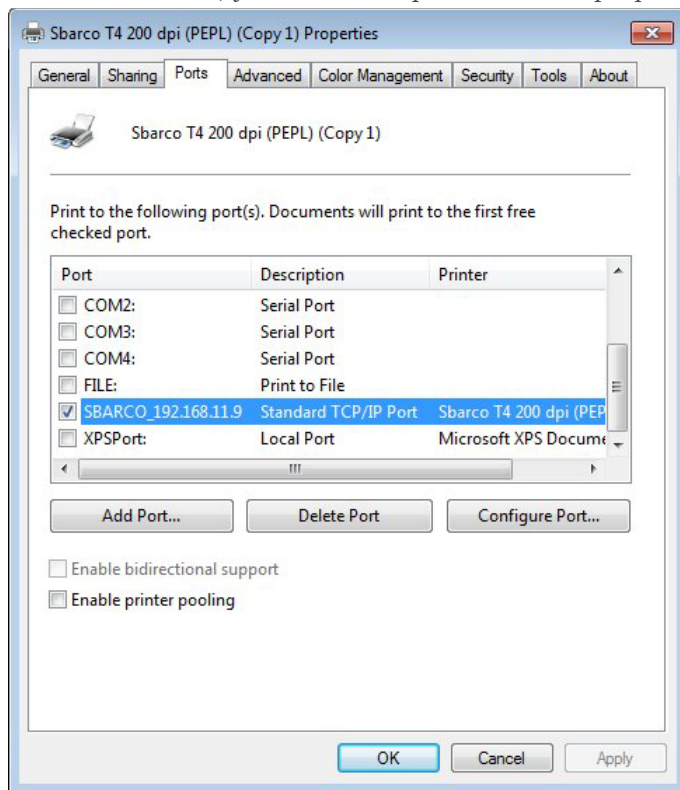
- 2.10 In the port setting page, you must select “Raw Protocol” and the setting of the “Port Number of Raw Settings” must be exactly the same as Ethernet printer server UDP port number. Then check “OK” .



- 2.11 Choose SBARCO driver and press next to finish installation



2.12 After installation, you can check ports of driver properties.

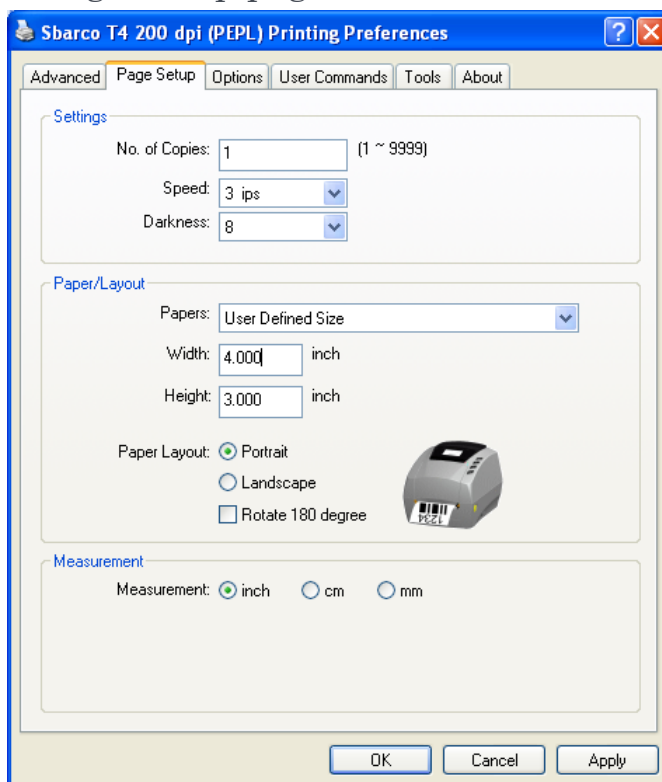


PRINTER DRIVER SETTINGS

During printing, the printer driver based on property values within the machine, to regulate the printer how to work, if not actually set in the print, there may be errors.

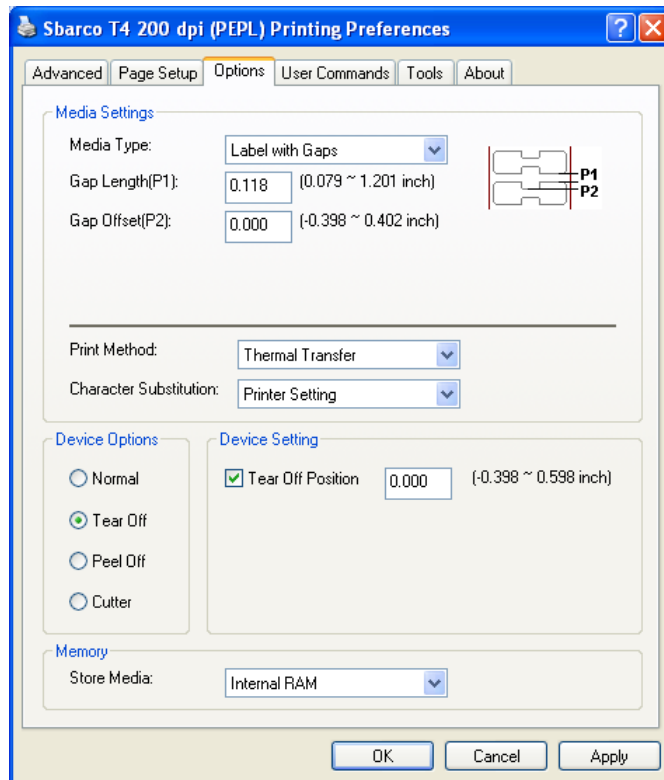
Printer driver properties page, including the "Page Setup", "Options", "User Commands", "Tools", and "About".

1. Introduction Page Setup page









Item	Description
No. of Copies	No. Of Copies is the label of the copy number.
Speed	Speed is the speed of printing
Darkness	Darkness is the color depth of an image when printing. The value too high will easily melt off the ribbon.
Paper	Paper is the actual size of paper that has several built-in size. If you can't find the right size, you can choose "User Defined Size" to set the new size.
Width, Height	Width and Height are the paper size. When you select "user-defined size", the two fields will be able to enter the value.
Paper Layout	Paper Layout is printed vertically or horizontally (rotated 90 degrees). When the editorial page has been greater than the width of the actual width of the printer, the user must select the "horizontal print" to rotate "Edit Layout" to 90 degrees to edit. Height and width of the swap at this time, you do not have limited the actual width of the printer.
Rotate 180 degree	Rotate 180 degree is a rotating "content pages" to print out 180 degrees. Editing not be affected. When unchecked, the default printer is printed backwards.
Measurement	Measurement is the unit in which the input value.

2. Introduction Options page



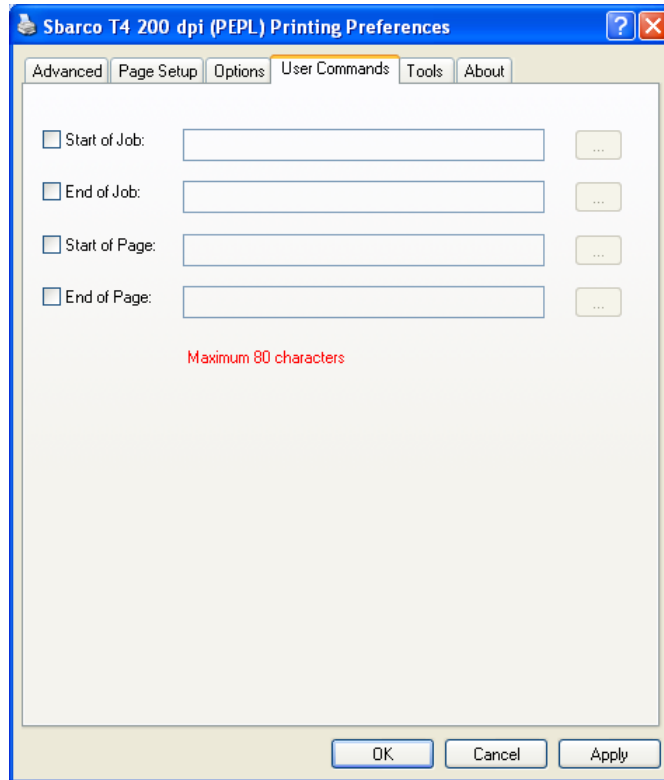
Item	Description
Media Settings	Media Settings is the format of the paper that has "label with gaps" , "label with marks" and "continuous paper" .
Label with Gaps	<ul style="list-style-type: none"> ◆ "Gap Length(P1)" is the distance between P1. ◆ "Gap Offset (P2)" is the need to shift after the end of P1 origin from P2. If it is negative, the shift is to move within the interval. If it is positive, the displacement is to move outside the interval. ◆ When the sensor moves to B, the printer does not recognize the actual size of the interval. At this point we must increase the value of P1, so that point B closer to P2, in order to allow the printer to identify the actual interval. ◆ When the sensors move to A or C at the time, the printer can recognize the actual size of the interval. So now only need to enter the distance value of P1.
Label with Marks	<ul style="list-style-type: none"> ◆ "Black Line(P1)" is the distance between P1. ◆ "Thickness Offset (P2)" is the need to shift after the end of P1 origin from P2. If it is negative, the shift is to move within the black line. If

it is positive, the displacement is to move outside the black line.	
Continuous	<p>Media Type: <input type="text" value="Continuous"/> </p>  <p>Stop Offset (P3): <input type="text" value="0.000"/> (0.000 ~ 2.000 inch)</p> <p><input type="checkbox"/> Stop On Last Element</p> <ul style="list-style-type: none"> ◆ “Continuous” mode is to ignore the paper's "pitch" and "black line" to print to the specified length. ◆ “Stop Offset (P3)” is the printer to print to the last element is stopped, you will also need much more than spit out from the paper. ◆ “Stop On Last Element” is a printer to print label, then stop the last image in the layout position. At this point it may not stop at the specified length. If you print to a specific paper size, then the option shall be canceled.
Print Method	<p>Print Method is to select the ribbon or not ribbon for printing.</p> <p>When you select "Direct Thermal" mode, the printer print without ribbon. When you select "Thermal Transfer" mode, the printer print with ribbon.</p> 
Character Substitution	<p>Character Substitution is to choose the "Slash Zero" or "No Slash Zero" to print the printer's built-in fonts. Or, select the "Printer Settings" from the previous settings to decide.</p> <p style="text-align: center;">   </p> <p>Slash Zero , No Slash Zero </p>
Store Media	<p>Store Media is the form stored within the storage location of the printer, respectively:</p> <ul style="list-style-type: none"> ◆ “Internal RAM” When the printer power is off, then all forms will disappear. ◆ “Internal Flash ROM” when the printer power is off, then all forms will be stored permanently. ◆ “SD Card”
Device Options (Normal)	<p>This is the default option when printing.</p>
Device Options (Tear Off)	<div style="border: 1px solid #ccc; padding: 5px;"> <div style="display: flex; justify-content: space-between;"> <div style="width: 45%;"> <p>Device Options</p> <p><input type="radio"/> Normal</p> <p><input checked="" type="radio"/> Tear Off</p> <p><input type="radio"/> Peel Off</p> <p><input type="radio"/> Cutter</p> </div> <div style="width: 45%;"> <p>Device Setting</p> <p><input checked="" type="checkbox"/> Tear Off Position <input type="text" value="0.000"/> (-0.398 ~ 0.598 inch)</p> </div> </div> </div> <ul style="list-style-type: none"> ◆ This feature is when the printer to stop printing, the printer will feed the paper at the tear off blade, to allow users to easily tear. ◆ "Tear Off Position" can be adjusted, checked items will be adjusted in position on the specified value.

<p>Device Options (Peel Off)</p>	<p>Device Options</p> <p><input type="radio"/> Normal</p> <p><input type="radio"/> Tear Off</p> <p><input checked="" type="radio"/> Peel Off</p> <p><input type="radio"/> Cutter</p>	<p>Device Setting</p> <p><input checked="" type="checkbox"/> Peel Off Position <input type="text" value="0.000"/> (-0.398 ~ 0.598 inch)</p>
<ul style="list-style-type: none"> ◆ This feature is the printer to stop printing, the printer will use peeler to peel the paper. The user must remove the label, the printer will print the next label. ◆ "Peel Off Position" can be adjusted, checked items will be adjusted in position on the specified value. 		
<p>Device Options (Cutter)</p>	<p>Device Options</p> <p><input type="radio"/> Normal</p> <p><input type="radio"/> Tear Off</p> <p><input type="radio"/> Peel Off</p> <p><input checked="" type="radio"/> Cutter</p>	<p>Device Setting</p> <p>Every Cut <input type="text" value="1"/> (1 ~ 255 Label)</p> <p><input checked="" type="checkbox"/> Cut Position <input type="text" value="0.000"/> (-0.398 ~ 0.598 inch)</p>
<ul style="list-style-type: none"> ◆ This feature is at the end of print, the printer will cut labels. ◆ "Cut Position" can be adjusted, checked items will be adjusted in position on the specified value. ◆ "Every Cut" is a batch cutting function. You can set the batch cut labels, to determine the labels per cut. 		

3. Introduction User Commands page

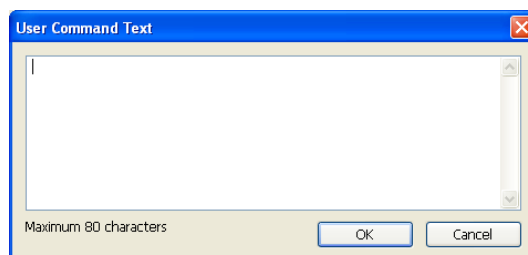
- When there is a specific instruction needs to be transferred to the printer, the user can enter commands here. For transfer instructions, check the time, and press the "..." button and the dialog box will appear for users to enter commands and other information.



Item	Description
Start of Job	Start of Job is sending commands or data to the printer before printing the entire job.
End of Job	End of Job is sending commands or data to the printer to print at the end of the job.
Start of Page	Start of Page is to send commands or data to the printer before starting to print on each label.
End of Page	End of Page is every label print job for each end point, to send commands or data to the printer.

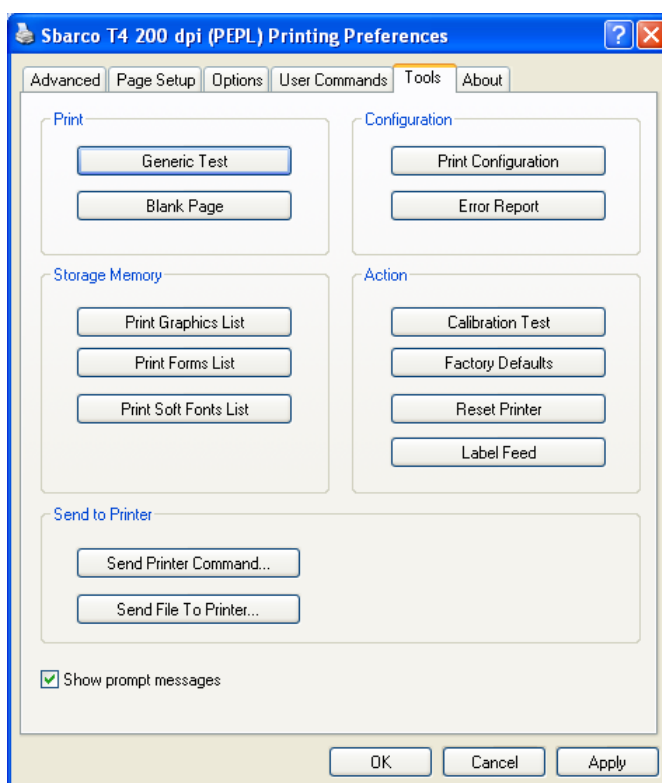
- User Command Text Dialog

Press the "..." button and the dialog box will appear for users to enter commands and other information. The edit box only can enter 80 characters.



4. Introduction Tools page

Here are some common requirements for the user to click buttons to perform the function.



Item	Description
Generic Test	"Generic Test" commands the printer to print out a label with "TEST" message.
Blank Page	"Blank page" commands the printer to feed out a blank label.
Print Configuration	"Print Configuration " commands the printer to print out a label with the printer settings.
Error Report	"Error Report " commands the printer to print out an error code label.
Print Graphics List	"Print Graphics List" commands the printer to print out a label. The label has a list of image stored inside the printer.
Print Forms List	"Print Forms List" commands the printer to print out a label. The label has a list of form stored inside the printer.
Print Soft Fonts List	"Print Soft Fonts List" commands the printer to print out a label. The label has a list of soft-font stored inside the printer.
Calibration Test	"Calibration Test " commands the printer to do the paper calibration work.
Factory Defaults	"Factory Defaults " commands the printer to reset to factory defaults.
Reset Printer	"Rest Printer" commands the printer to do the reset.
Label Feed	"Label Feed" commands the printer to feed a label.
Send Printer Command	The driver will appear an edit-dialog to provide user input data or instruction. After the input, the driver will transfer the contents of the input to the printer.
Send File To	The driver will appear a file browse dialog to provide user select a

Printer	file. After selecting, the driver will transfer the file to the printer.
Show prompt messages	If you check this feature, the program will display a prompt after the completion message. And inform the user has been completed.

5. Introduction About page



Item	Description
Driver Version	This is the version of printer driver.
Command Engine	This is the printer language command version.
Support Firmware	This is the required printer driver with the printer firmware version.