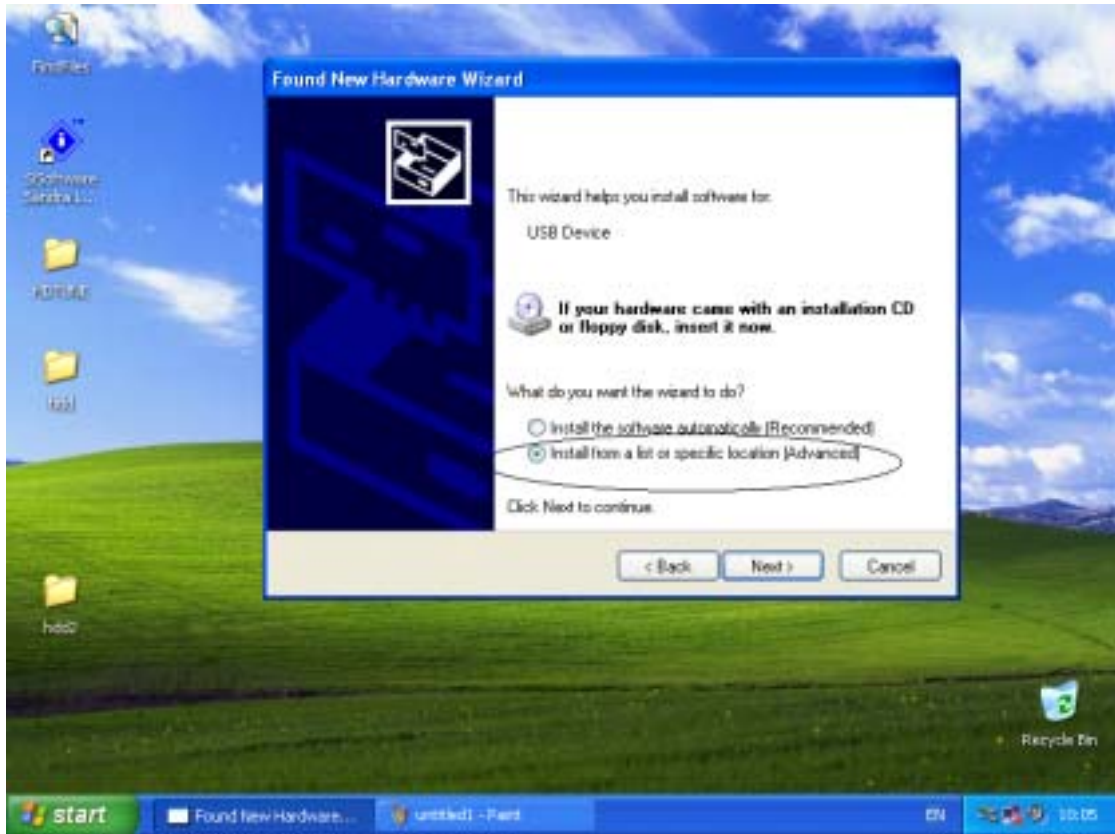


## CD7220-U USB DRIVER SETUP:



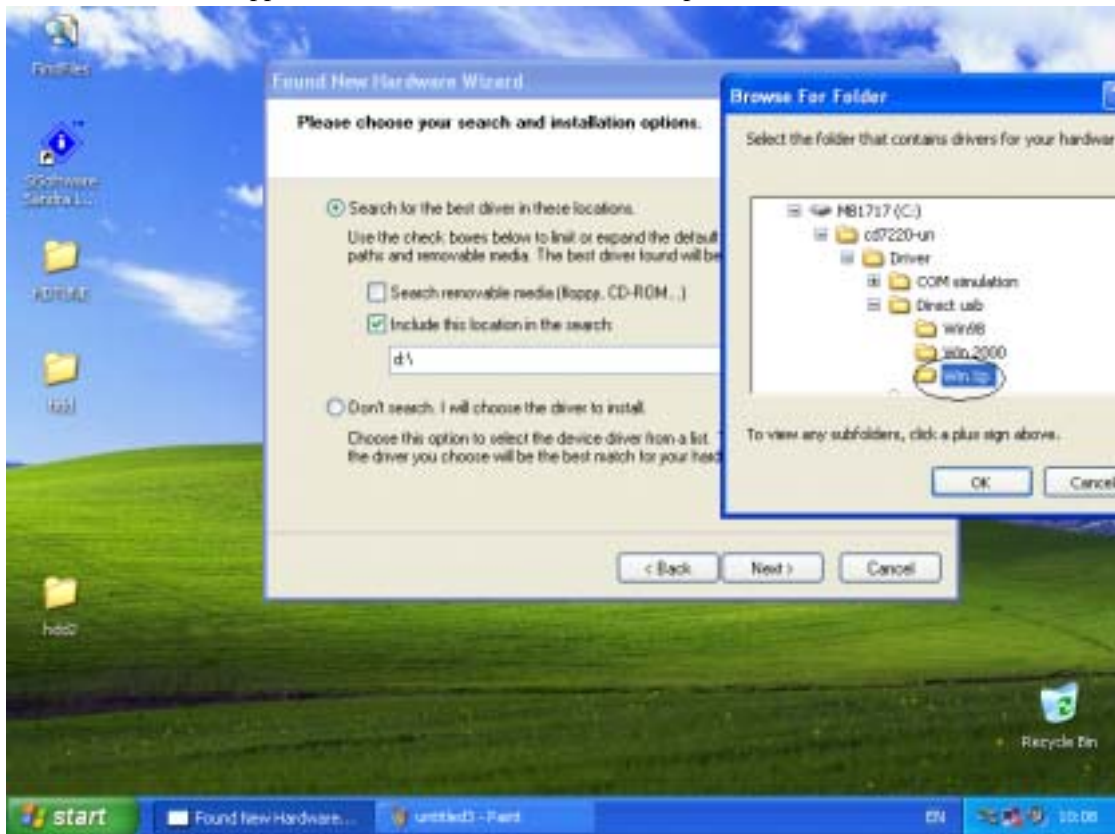
1- 1

1.If you first use CD7220U, when USB port of CD7220-U connects PC, will display “find new hardware”, select option in the picture and click next step.



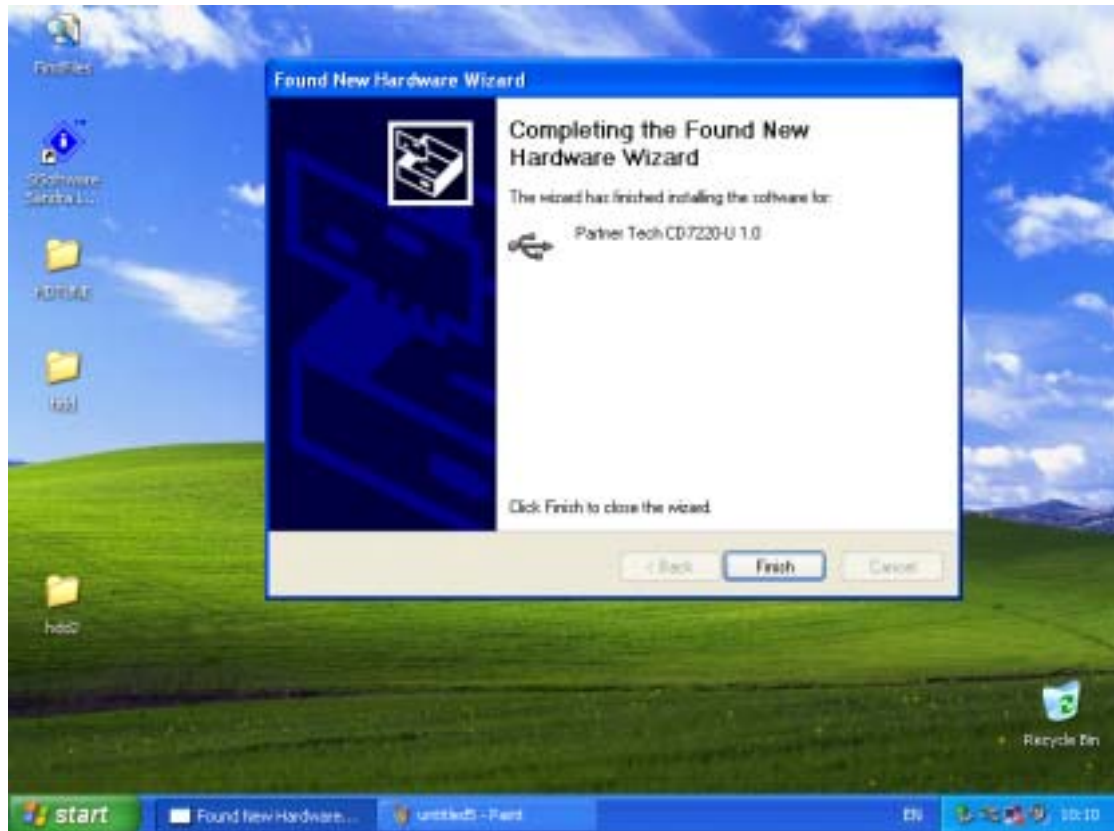
1-2

2.As 1-2,select item appointed in the from and click next step.



1-3

3.As 1-3,Depending on selecting COM-USB or TRUE-USB, Confirm to use driver.



1- 4

4.After finished driver program,you can use USB of CD7220-U.