

1.Voltage Page:

此頁面可以檢視目前電壓情形，在 refresh time 的位置，可以設置每幾秒更新一次電壓值，High Limit 及 Low Limit 可以為每個電壓值設定所能允許的最高電壓值及最低電壓值，當電壓值大於 High Limit 及小於 Low Limit 時，電壓值會變成紅色以警示目前電壓值有問題(如圖 1)。



圖 1

2.Fan Page

此頁面可以檢視目前風扇轉速，在 refresh time 的位置，可以設置每幾秒更新一次轉速值，High Limit 及 Low Limit 可以為每個轉速值設定所能允許的最高轉速值及最低轉速值，當轉速值大於 High Limit 及小於 Low Limit 時，轉速值會變成紅色以警示目前轉速值有問題(如圖 2)



圖 2

當按下”Smart Fan Setting”按鈕時，風扇進階設定頁面會出現，此時可以選擇所要設定的風扇，以及目前風扇的模式，風扇有三種設定模式

1.On/Off Mode(如圖 3)

點選 on 或 off，直接將風扇開啓或關閉。

2.PWM Mode(如圖 4)

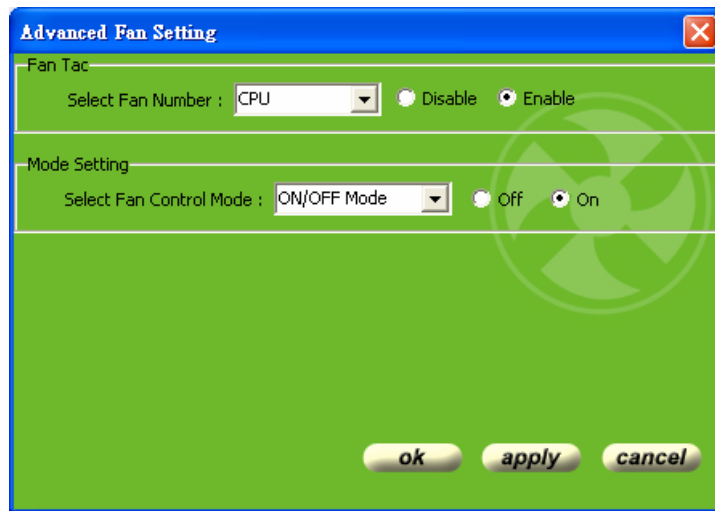
直接輸入風扇的 PWM 值(1~127 之間)。

3.Automatic Mode(如圖 5)

輸入各個設定值

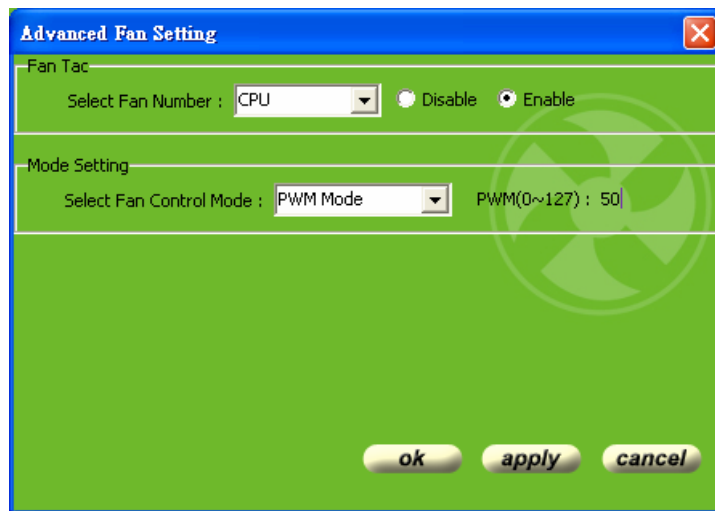
- Fan Start:當溫度到達設定值時，風扇開啓轉動
- Fan Off:當溫度到達設定值時，風扇停止轉動
- Full Speed:當溫度到達設定值時，風扇全速轉動
- Start PWM Value:當風扇開始轉動時，PWM 的初始值(1~127 之間)
- Slope(PWM Value(add/oC)):風扇開始轉動後，溫度每升高一度 PWM 值增

加的輻度



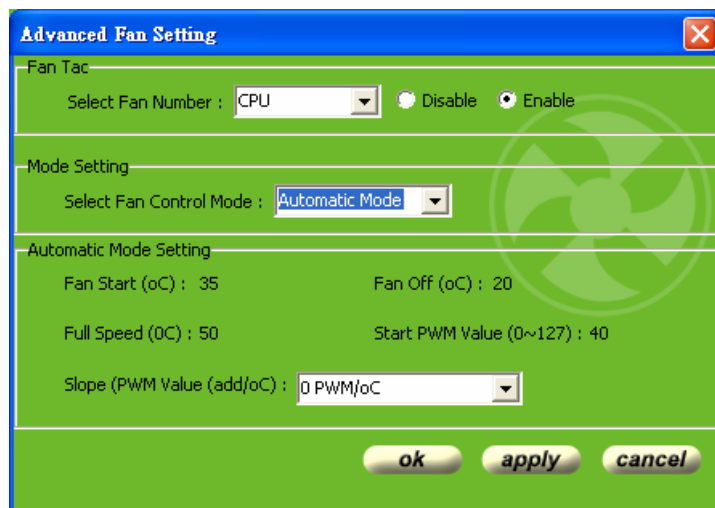
The dialog box is titled "Advanced Fan Setting" and has a blue header bar with a close button (X) on the right. It is divided into three horizontal sections. The first section, "Fan Tac", contains a dropdown menu for "Select Fan Number" set to "CPU", and two radio buttons: "Disable" (unselected) and "Enable" (selected). The second section, "Mode Setting", contains a dropdown menu for "Select Fan Control Mode" set to "ON/OFF Mode", and two radio buttons: "Off" (unselected) and "On" (selected). The third section is empty. At the bottom, there are three buttons: "ok", "apply", and "cancel".

圖 3



The dialog box is titled "Advanced Fan Setting" and has a blue header bar with a close button (X) on the right. It is divided into three horizontal sections. The first section, "Fan Tac", contains a dropdown menu for "Select Fan Number" set to "CPU", and two radio buttons: "Disable" (unselected) and "Enable" (selected). The second section, "Mode Setting", contains a dropdown menu for "Select Fan Control Mode" set to "PWM Mode", and a text field for "PWM(0~127) : 50". The third section is empty. At the bottom, there are three buttons: "ok", "apply", and "cancel".

圖 4



The dialog box is titled "Advanced Fan Setting" and has a blue header bar with a close button (X) on the right. It is divided into three horizontal sections. The first section, "Fan Tac", contains a dropdown menu for "Select Fan Number" set to "CPU", and two radio buttons: "Disable" (unselected) and "Enable" (selected). The second section, "Mode Setting", contains a dropdown menu for "Select Fan Control Mode" set to "Automatic Mode". The third section, "Automatic Mode Setting", contains four text fields: "Fan Start (oC) : 35", "Fan Off (oC) : 20", "Full Speed (0C) : 50", and "Start PWM Value (0~127) : 40". Below these is a dropdown menu for "Slope (PWM Value (add/oC) : 0 PWM/oC". At the bottom, there are three buttons: "ok", "apply", and "cancel".

圖 5

3. Temperature Page:

此頁面可以檢視目前溫度情形，在 refresh time 的位置，可以設置每幾秒更新一次溫度值，High Limit 及 Low Limit 可以為每個溫度值設定所能允許的最高溫度值及最低溫度值，當溫度值大於 High Limit 及小於 Low Limit 時，溫度值會變成紅色以警示目前溫度值有問題(如圖 6)。

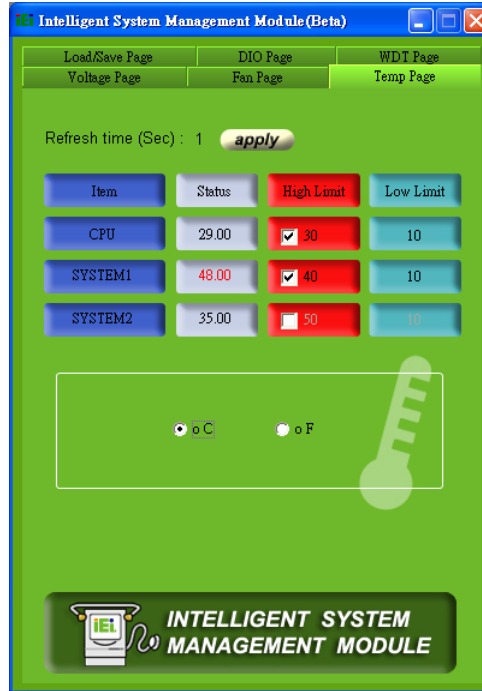


圖 6

顯示的溫度值可以使用華氏或攝氏表示，點選下方的 oC 及 oF 即可變換(如圖 7)

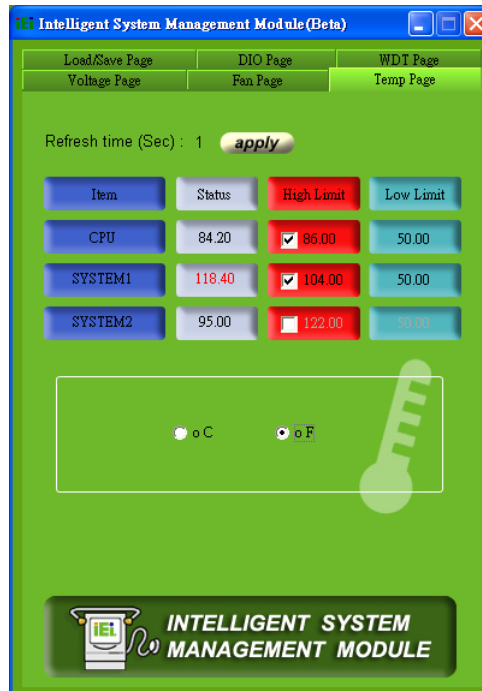


圖 7

4. Watch dog timer page

此頁面可以設定 WDT 的時間，可在 Set Timeout 的部份填入時間，並可在後方點選填入的值為分鐘或秒。點選 Start 即開始倒數，Refresh 即從新倒數，Stop 即停止(如圖 8)

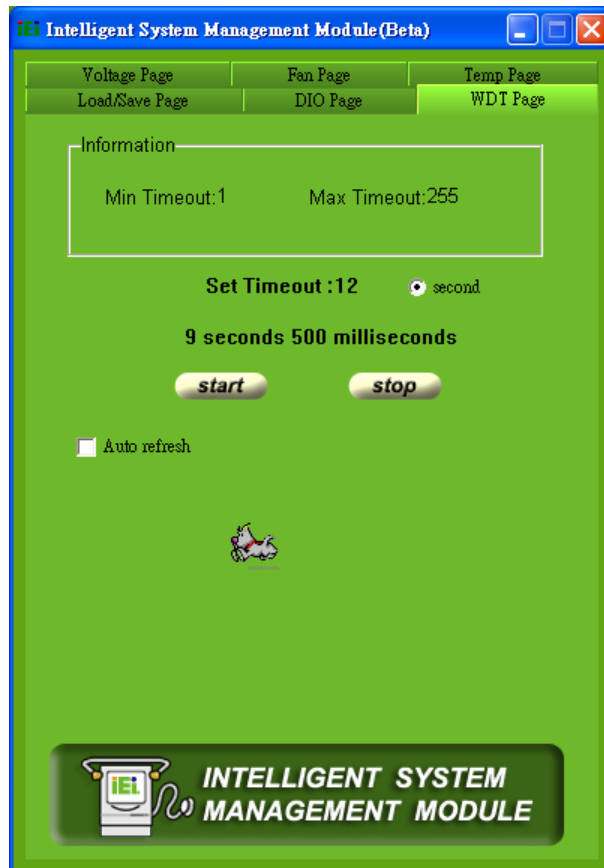


圖 8

5.Digital input/output page

此頁面可以顯示目前 GPI 的值，以及寫出 GPO 值，藉由直接點選 GPO Information 上的圖示，可以設定所要寫出去的值為 high or low，點選 Write 即可以狀態寫出(如圖 9)



圖 9

6. Load/Save page

此頁面可將 High/Low Limit 的值以及 Smart Fan Setting 的資料儲存為.ini 檔，以便下次要使用時，可將此設定檔載入(如圖 10)

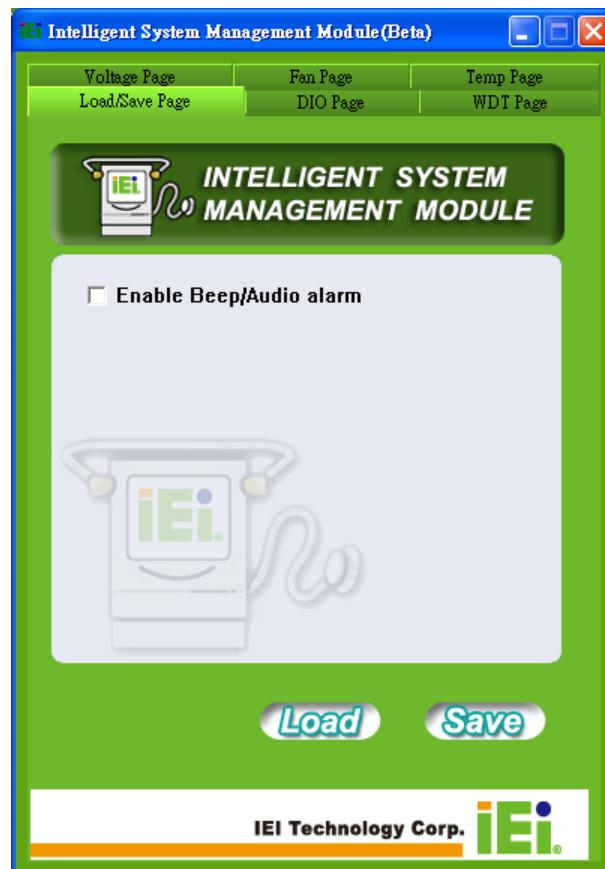


圖 10